

The Communication of Presence and Intention as Co-Occupants of an N-Dimensional Quantum Universe

Charles Ostman

Senior Fellow - Institute for Global Futures

Chairman, Technology Committee - NanoSig

tel 510 549 0129 email charles000@nanosig.org

<http://www.technofutures.com/charles1.htm>

<http://www.NanoSig.org>



3/11/2019



Quantum Astrobiology – Probing the Frontier of Conscious Engagement with Lifeforms and Intelligent Entities in an N-Dimensional Quantum Universe

Previous Contact Themes presented:

- ❑ The In-Silico Biology Paradigm – Gateway to Virtual Exobiology
- ❑ The Integration of Consciousness Domains in the Emergent Operational Ecology of Human and Synthetic Entities - the Next Evolutionary Increment
- ❑ Development of Linguistic Systems and Communication Protocols with Species of Artificial Lifeforms and Synthetic Sentients as a requirement for interaction with alien species
- ❑ Process Modalities of Applied Computational Resource Which Mimic the Physiologies of Living Systems as a mechanism for communication with real and synthetic entities

We are Biophysical Manifestations of Entities Dwelling within the Ubiquitous “Quantum Jello” Manifold –

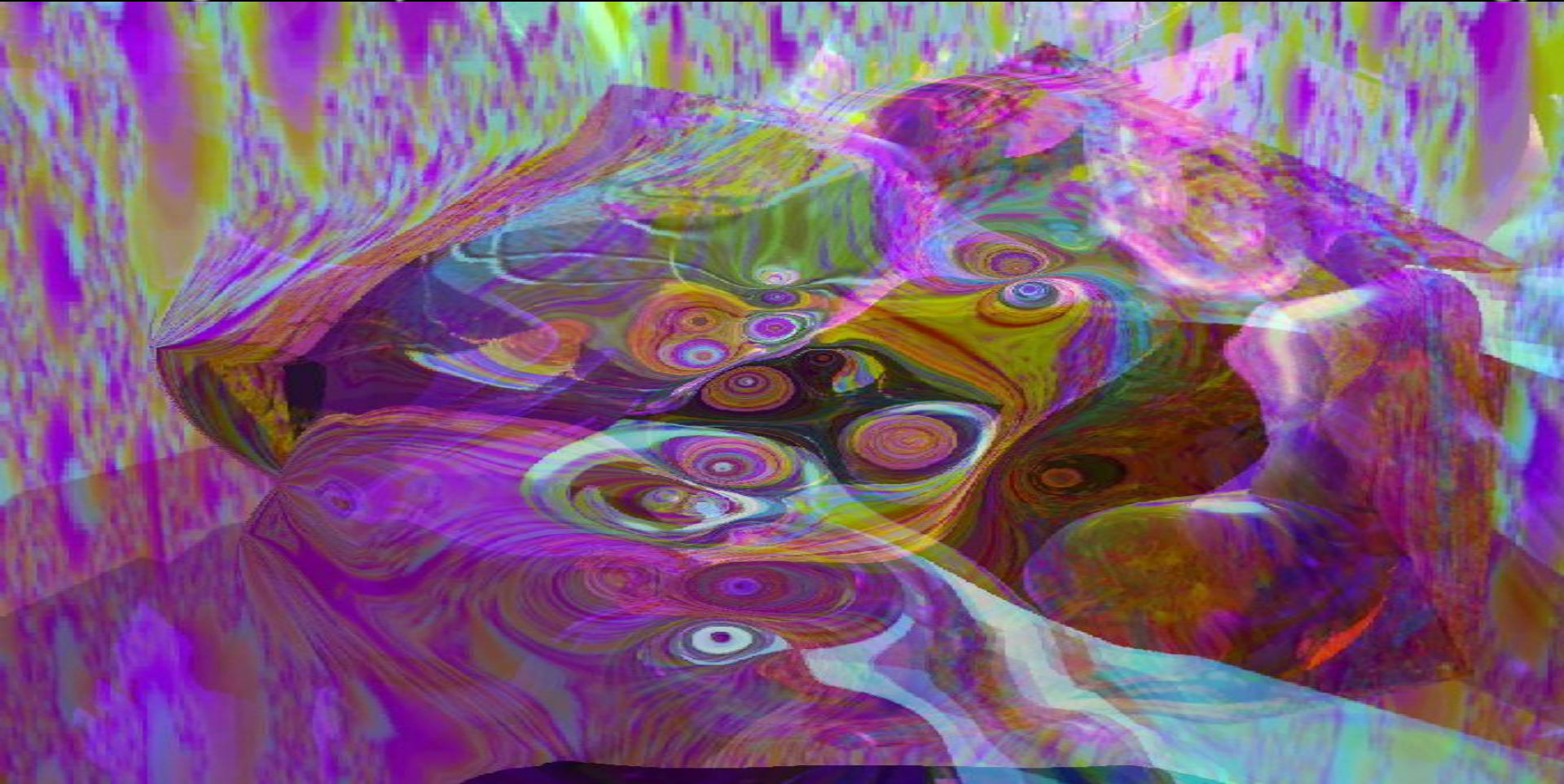
- ❑ All Living Things are Interconnected into an Operational Ecology
- ❑ This Planet as a “Living System” is Interconnected into a Cosmological Ecology



The Next Evolutionary Eventhorizon :

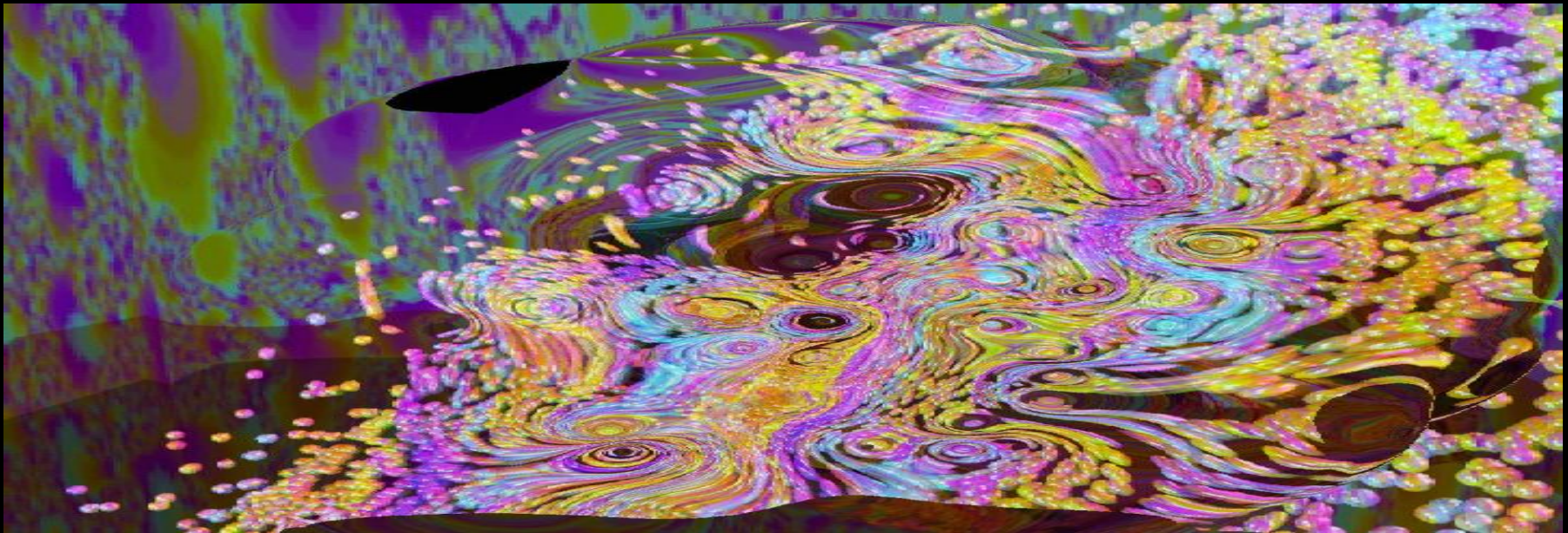
Harnessing the Quantum Dynamics of Focused Intentionality as a Means
of Hyperdimensional Presence Translation – the 4D to ND Interface

Enabling the Entry Threshold into the Domain of Quantum Astrobiology



Evolutionary Process Dynamics

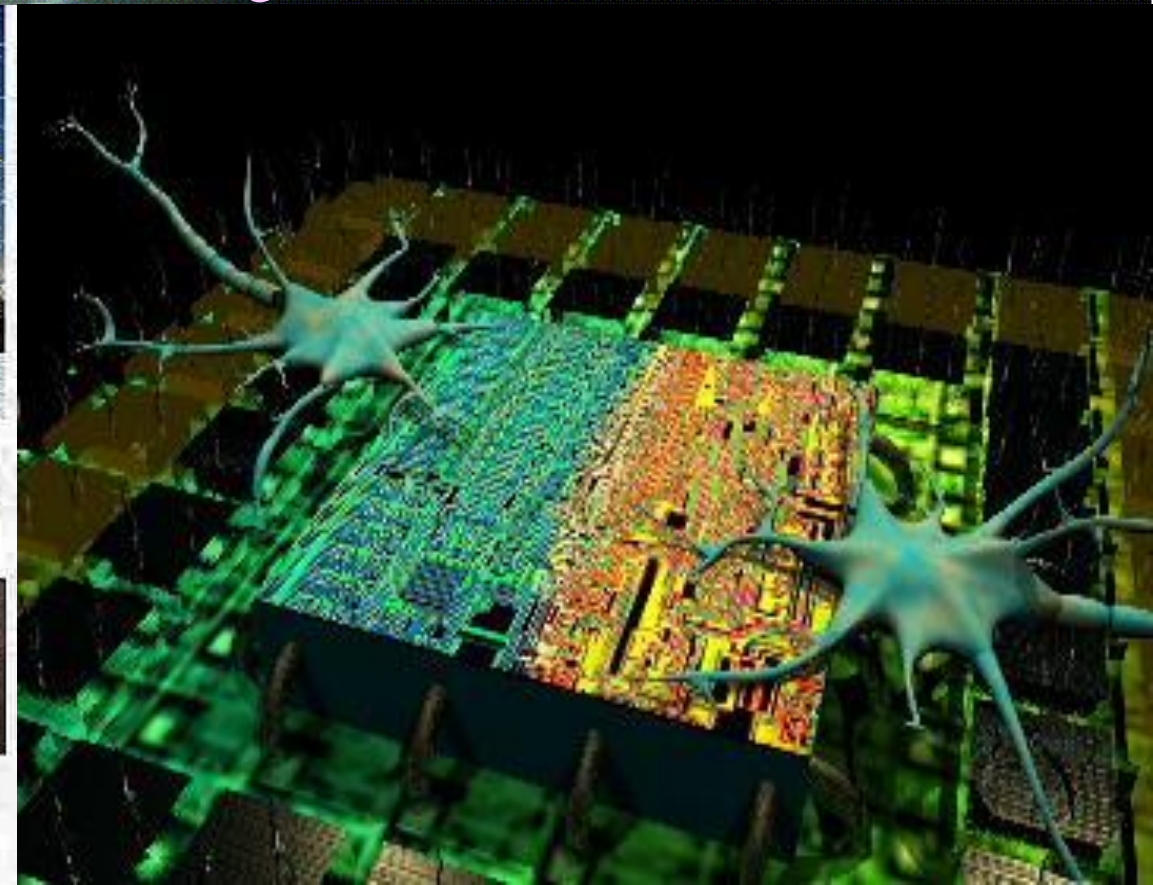
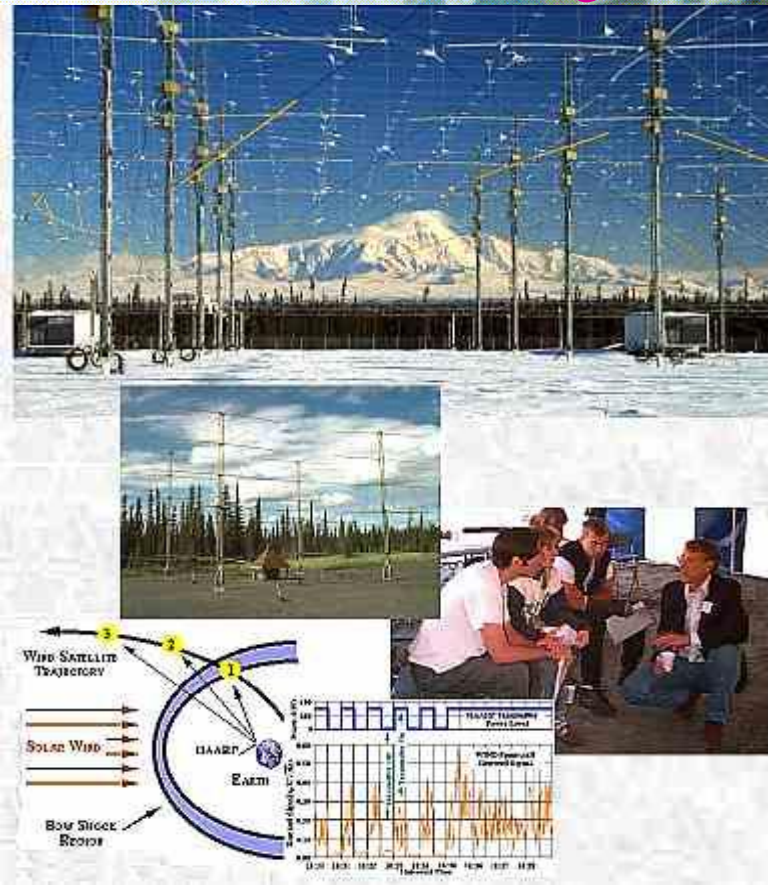
- ❑ Evolution tends to be a trauma induced process
- ❑ Fractal system model - operates at all scales, from the individual, to the collective, entire systems
- ❑ Provided the periodicity and amplitude of trauma cycles do not exceed the system capacity to respond, the system tends to evolve to a more robust form



The collective planetary gaia organism - at the next evolutionary challenge threshold

High Frequency Active
Auroral Research Program

Integrated biodevices / hybrid
organisms / artificial entities



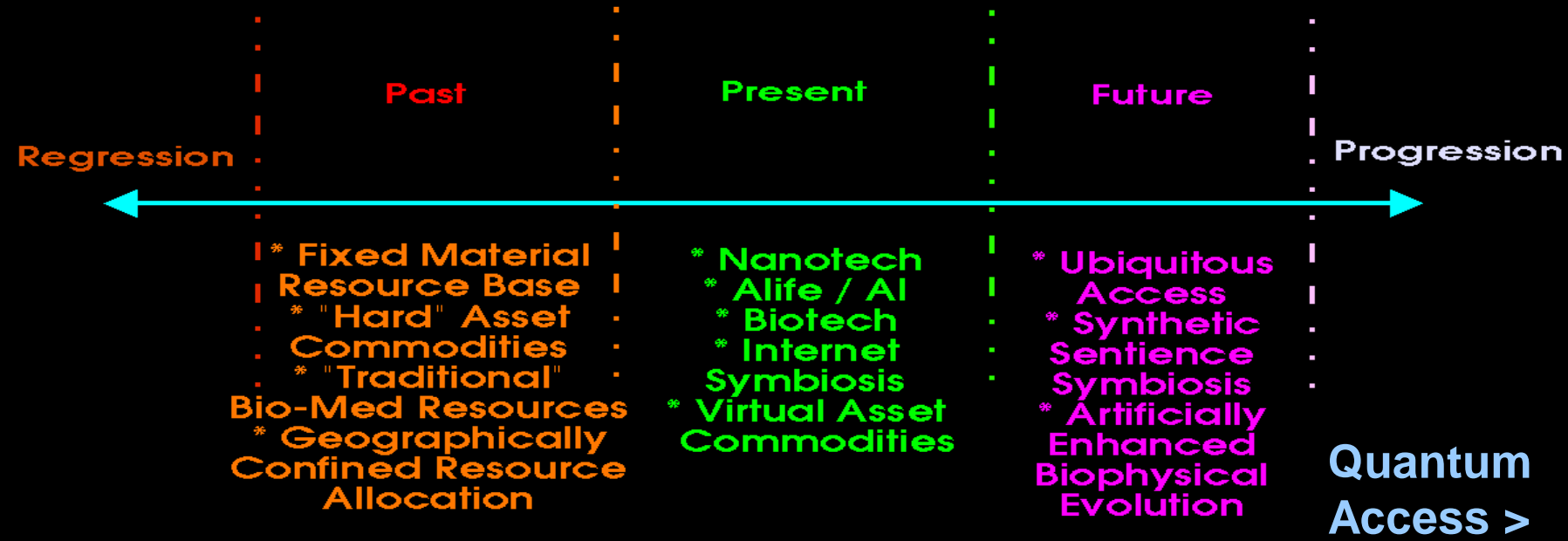
Processes dynamics of evolutionary system failure vs. “Armageddon” trauma singularity

Evolutionary system failure is the exact inverse of an Armageddon meteor impact event

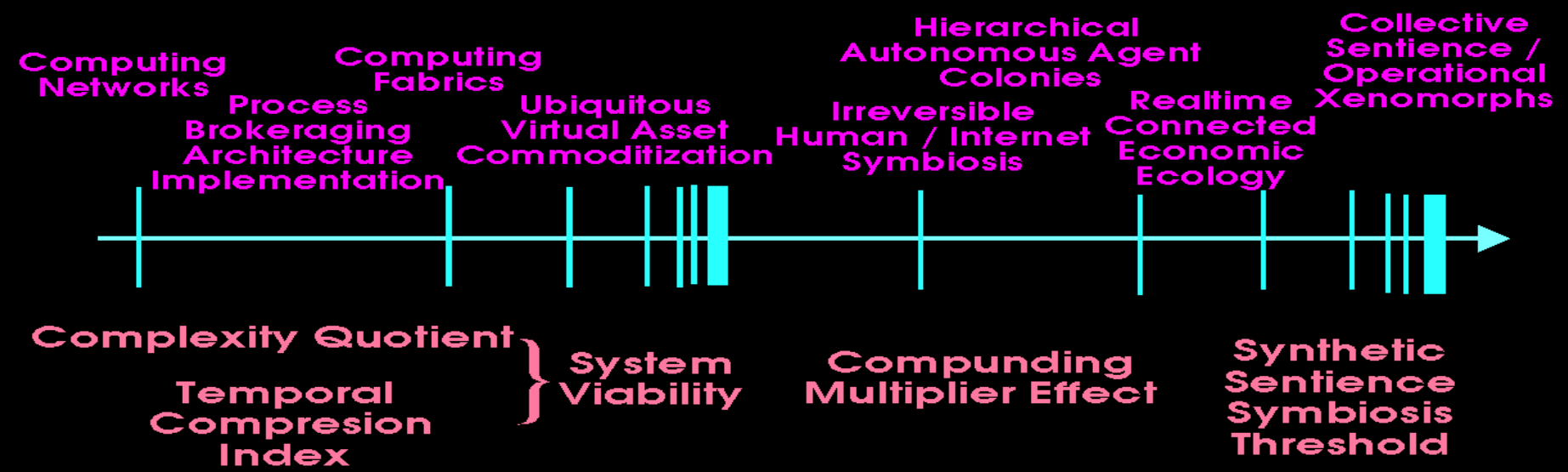


- Problem space to solution space interface boundary is highly perturbed
- Many to many problem space driver - perceived threat vectors are contextually interlinked, nonlinear interdependancies

Technology Driven Socio-Anthropological Evolutionary Threshold Domains



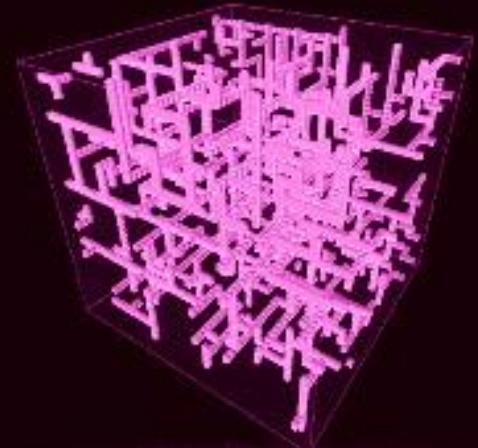
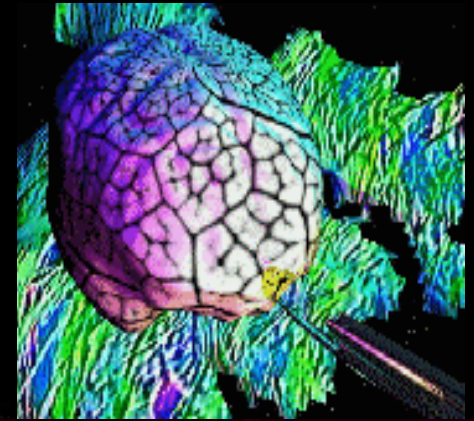
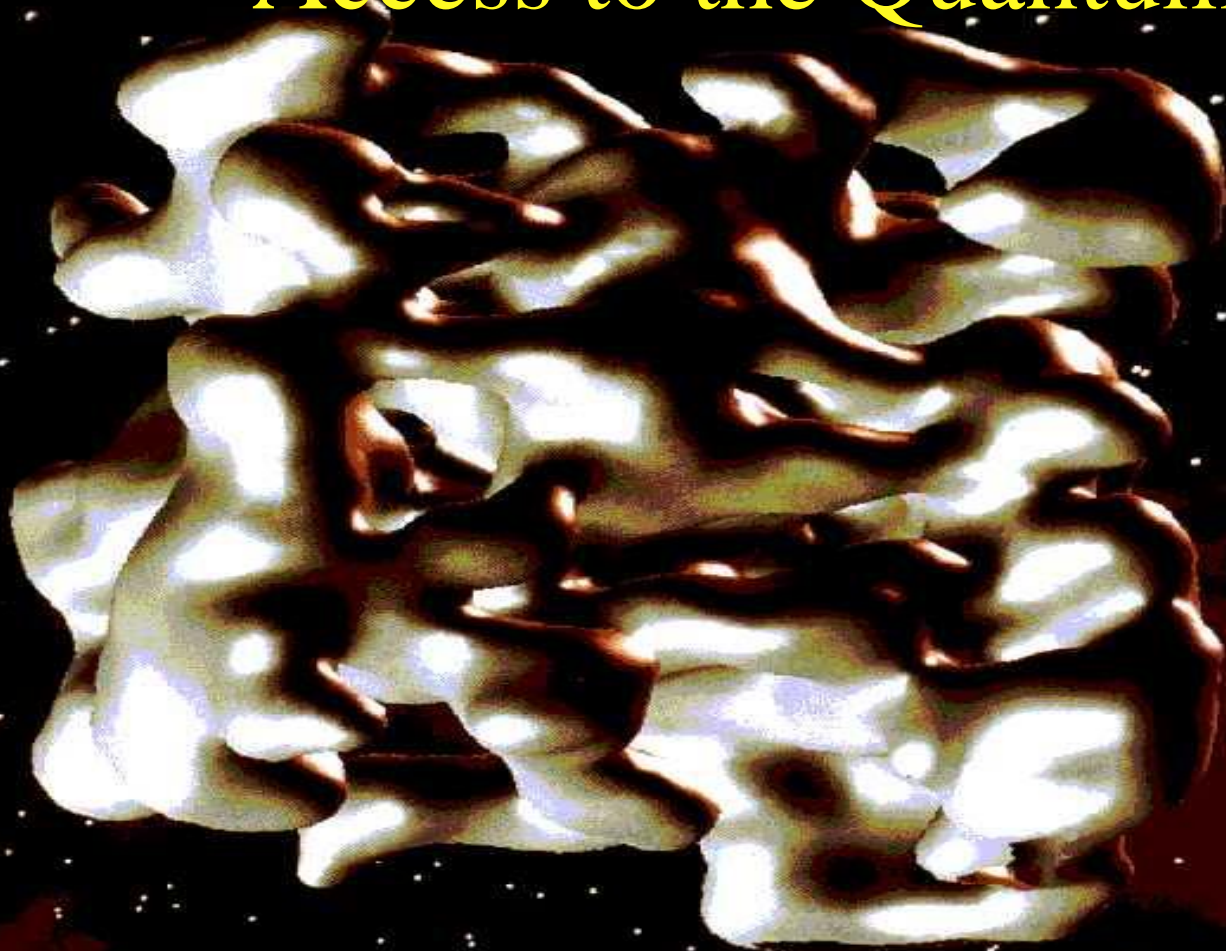
Evolutionary Eventstream Seminal Markers



The Next Evolutionary Eventhorizon

Hybrid Forms of Consciousness -

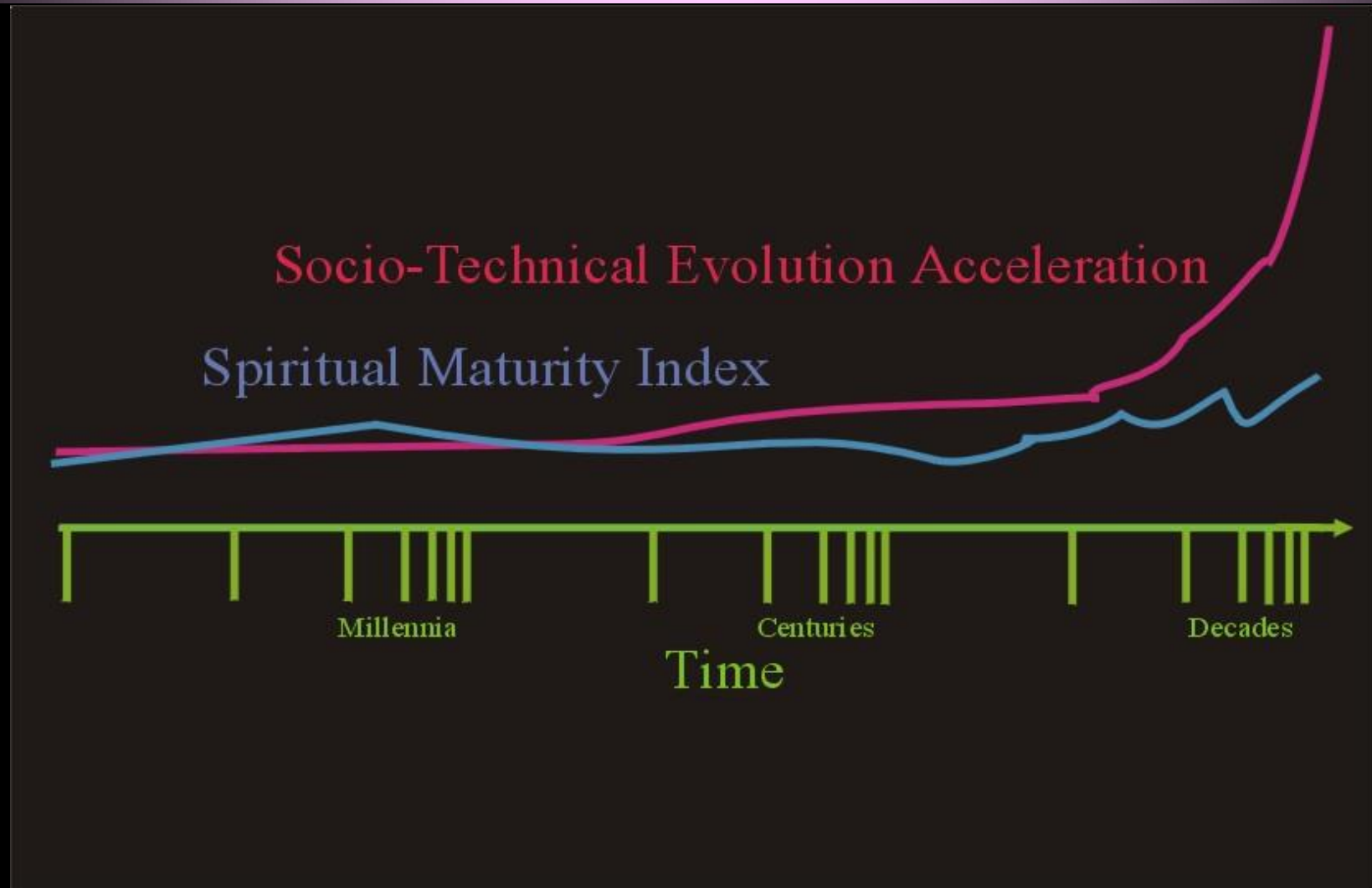
Access to the Quantum Foam



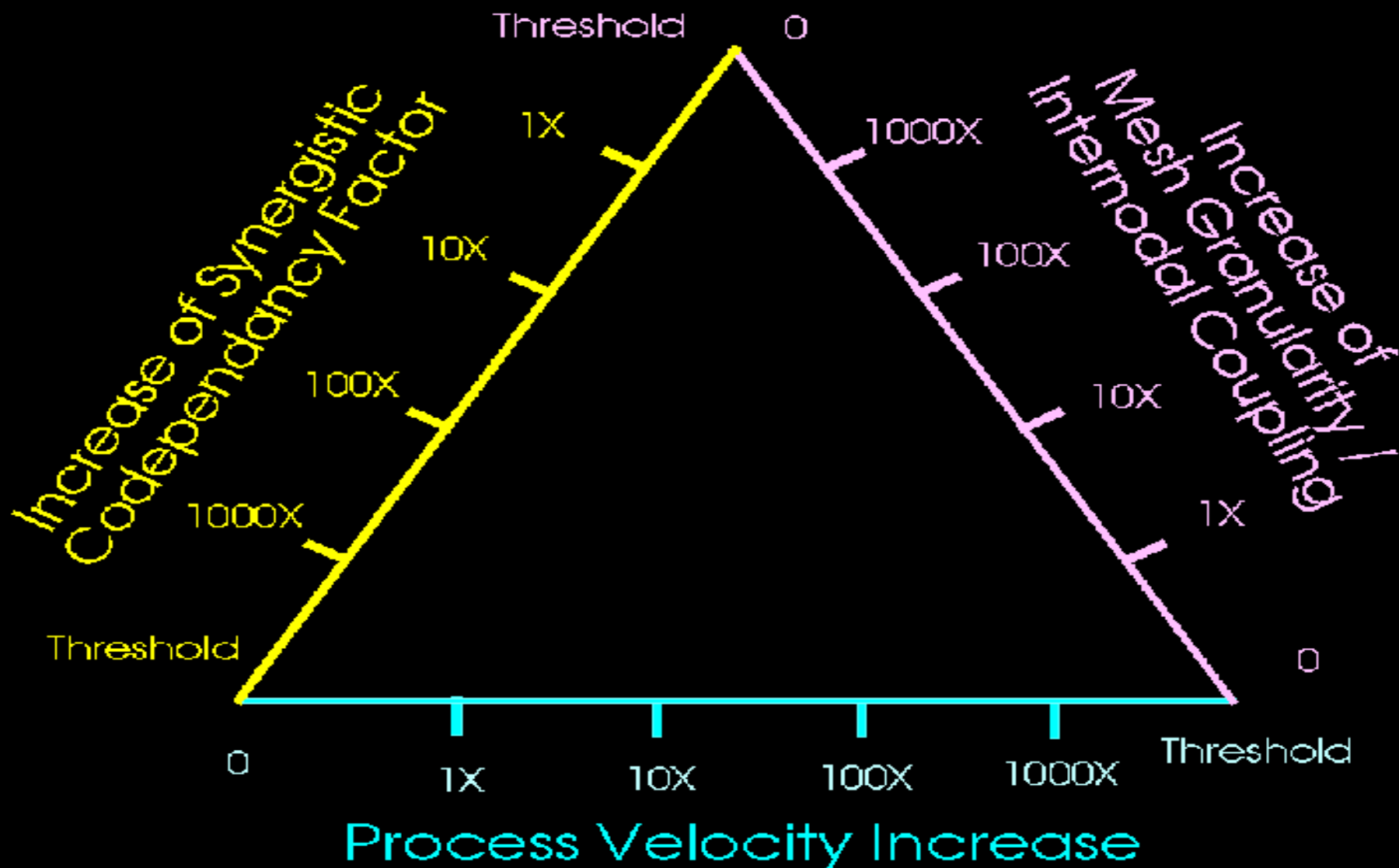
Major Evolutionary Eventstream Process Dynamics and Drivers

- Realtime interconnected *economic ecologies*
- Epicenters of value indexed by *virtual commodity assets*
- Mass spawning of *biological metaphors in computing*
- Irreversible *human / internet symbiosis threshold*
- Inception of the *molecular manipulation value chain*
- Emergent *sovereign knowledge domains*
- Dissolution of *organic / synthetic domain boundaries*
- Hybrid forms of consciousness – *access to the “quantum foam”*

Approaching the Evolutionary Eventhorizon Threshold



Convergence Syndrome Triad



**Process
Acceleration**

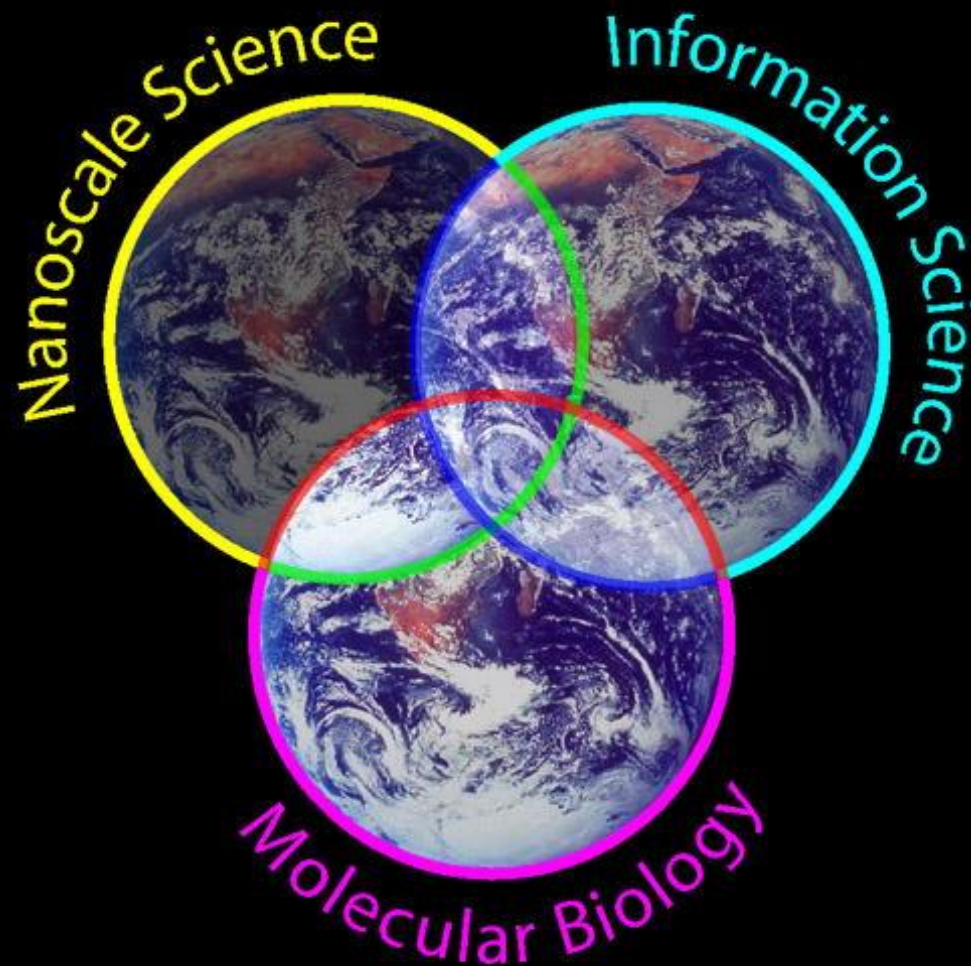
**Complexity
Increase**

Process Elements of the Convergence Syndrome

**Time
Compression**

**Connectivity
Increase**

The Emergent Infotech / Biotech / Nanotech Trichotomy



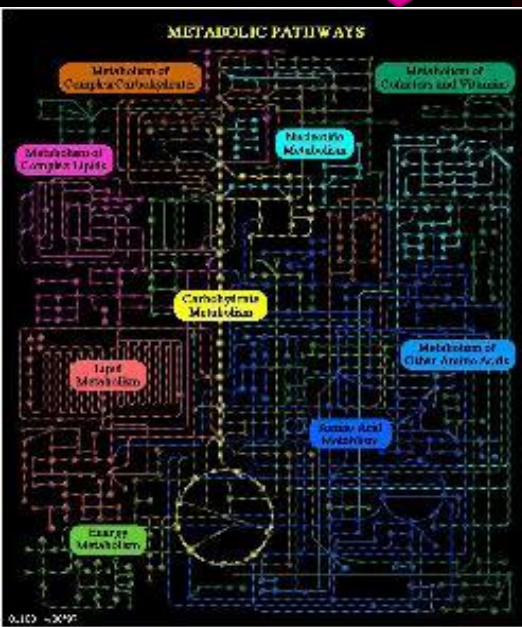
Infotech / Biotech / Nanotech Development Stream Example

Biological Metaphors in Computing

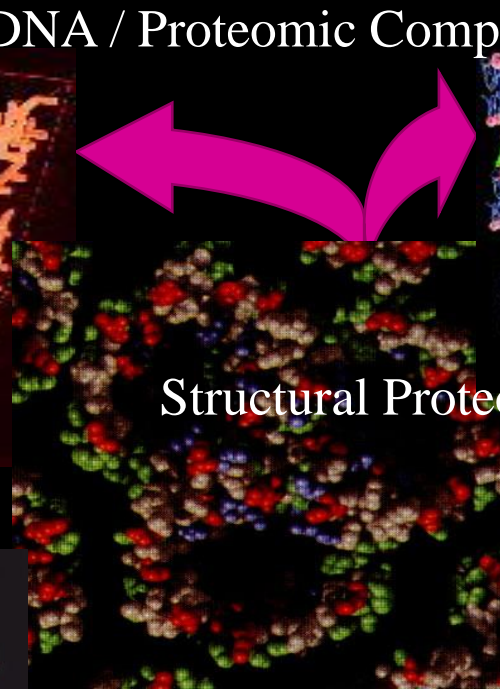
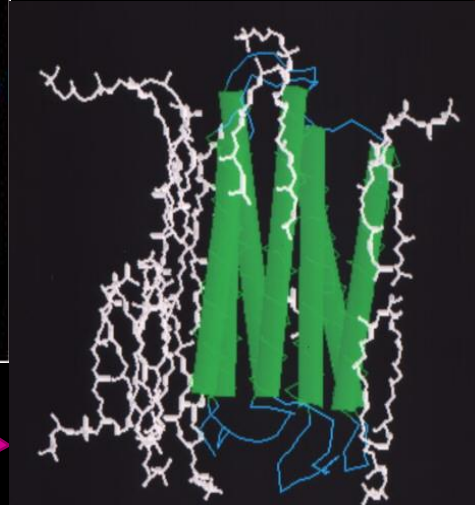
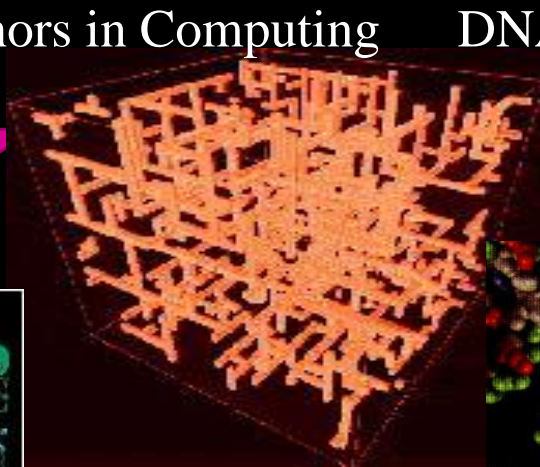
DNA / Proteomic Computing

Bioinformatics

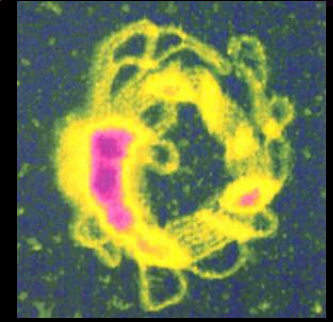
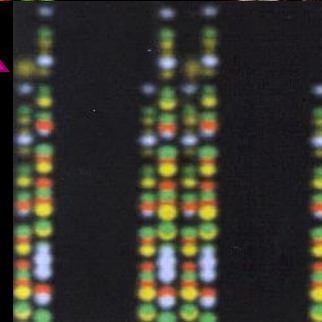
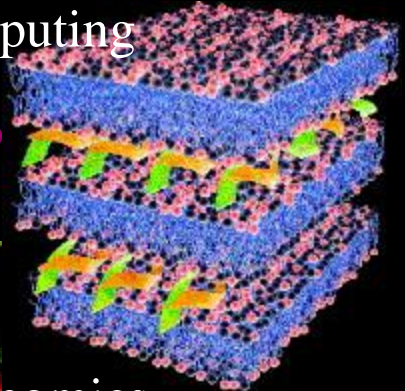
In Silico Biology



3/11/2019

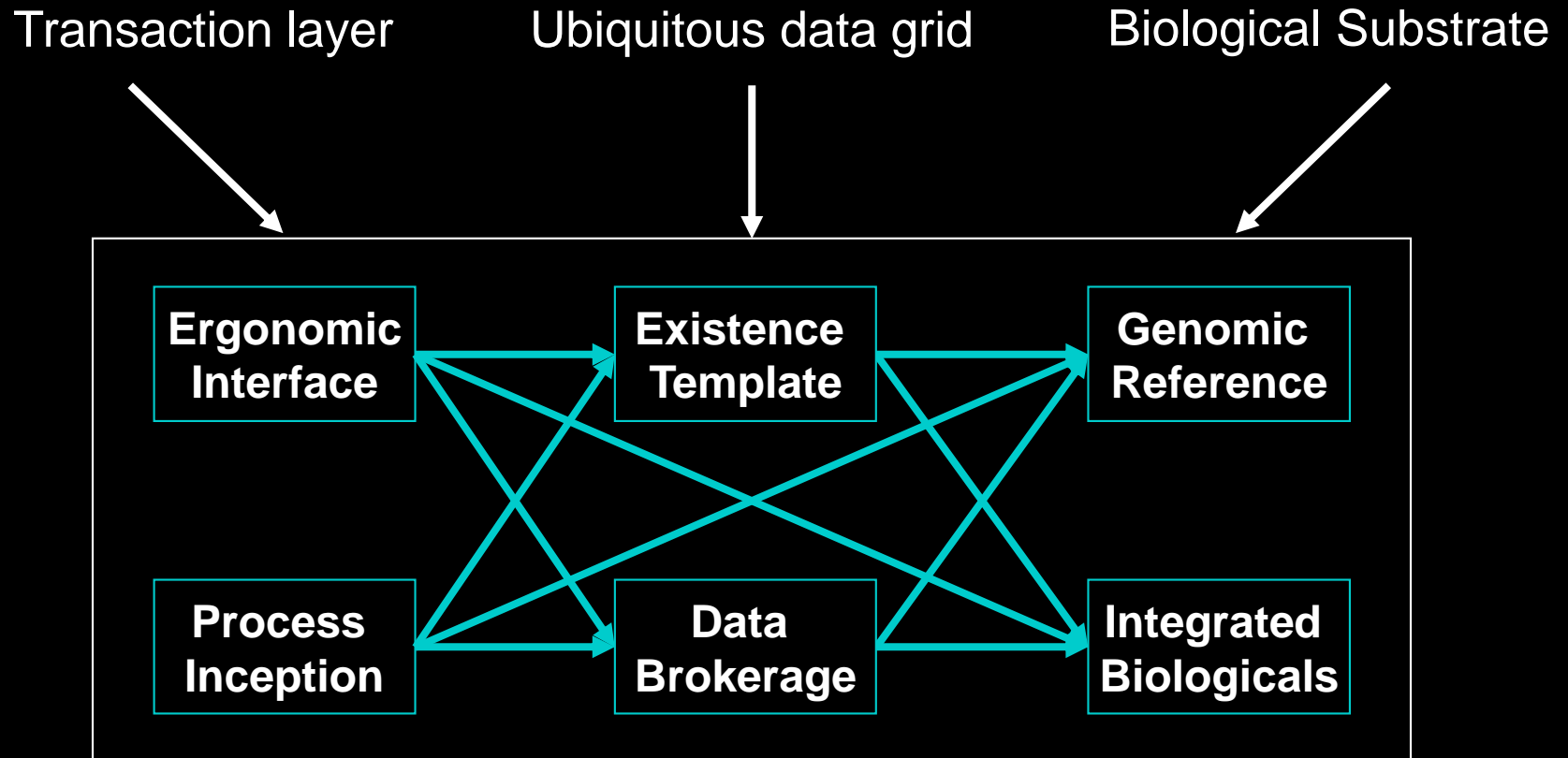


Structural Proteomics



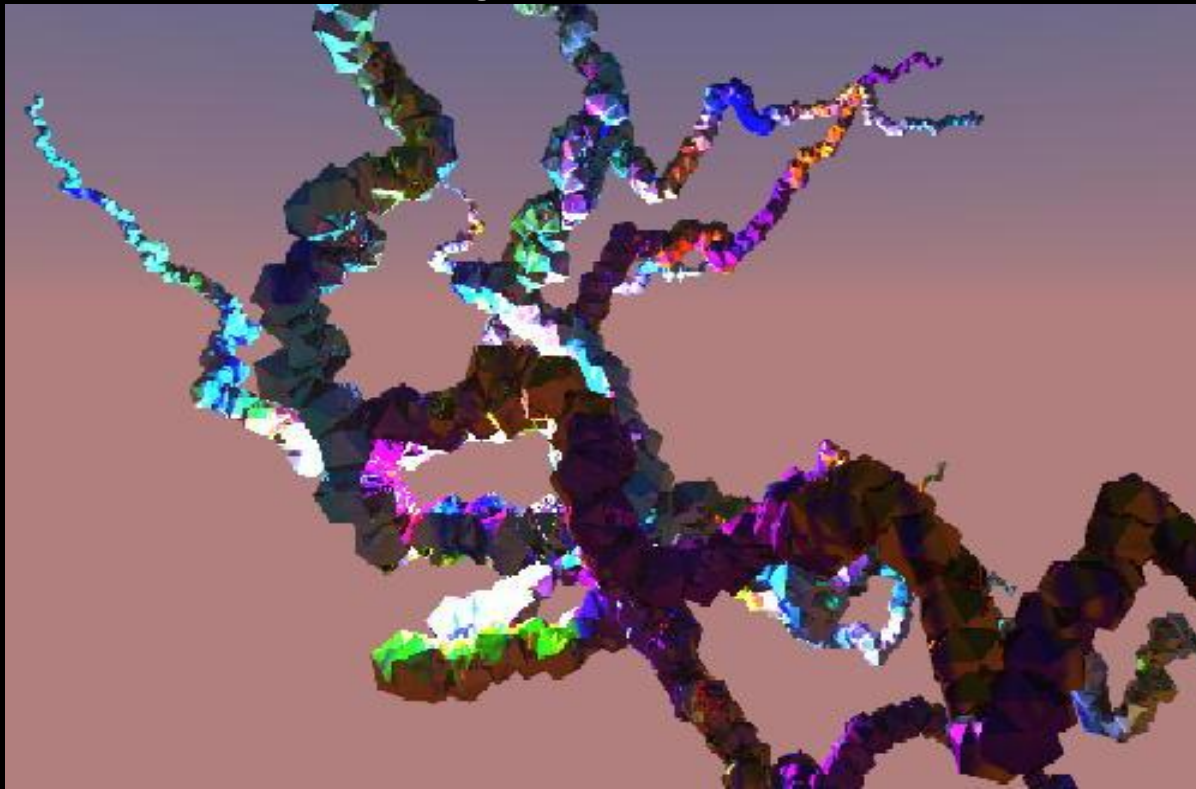
Genetic / BioMed Proteomics

Existence Valuation System Architecture



The Operational Ecology – Translation into Virtual Nature

- ❑ Self evolving information architectures, process platforms, knowledge ontologies
- ❑ Self assembling / self organizing molecular systems, biological and non-biological



Contextual Cognition in the Emergent Operational Ecology > Hyperdimensional Existence Navigation



Process Elements of the Emergent Human / Internet Symbiosis



Internet as an Organism Threshold

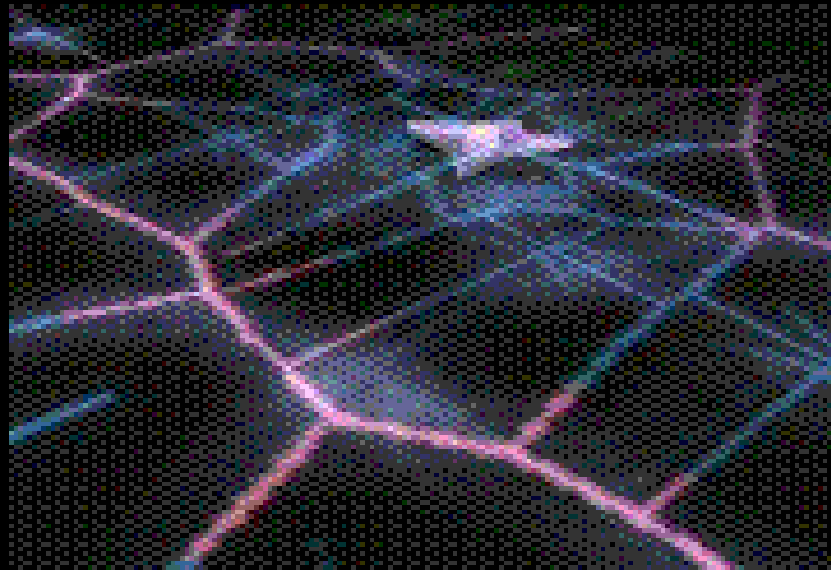
Biological Metaphors in Computing
Self Organizing Routing Structures
Defensive Networks
Synthetic Sentience

Intelligent Agent Entities
Multi-Agent Colonies / Hierarchies
Self Organizing Knowledge Ontologies

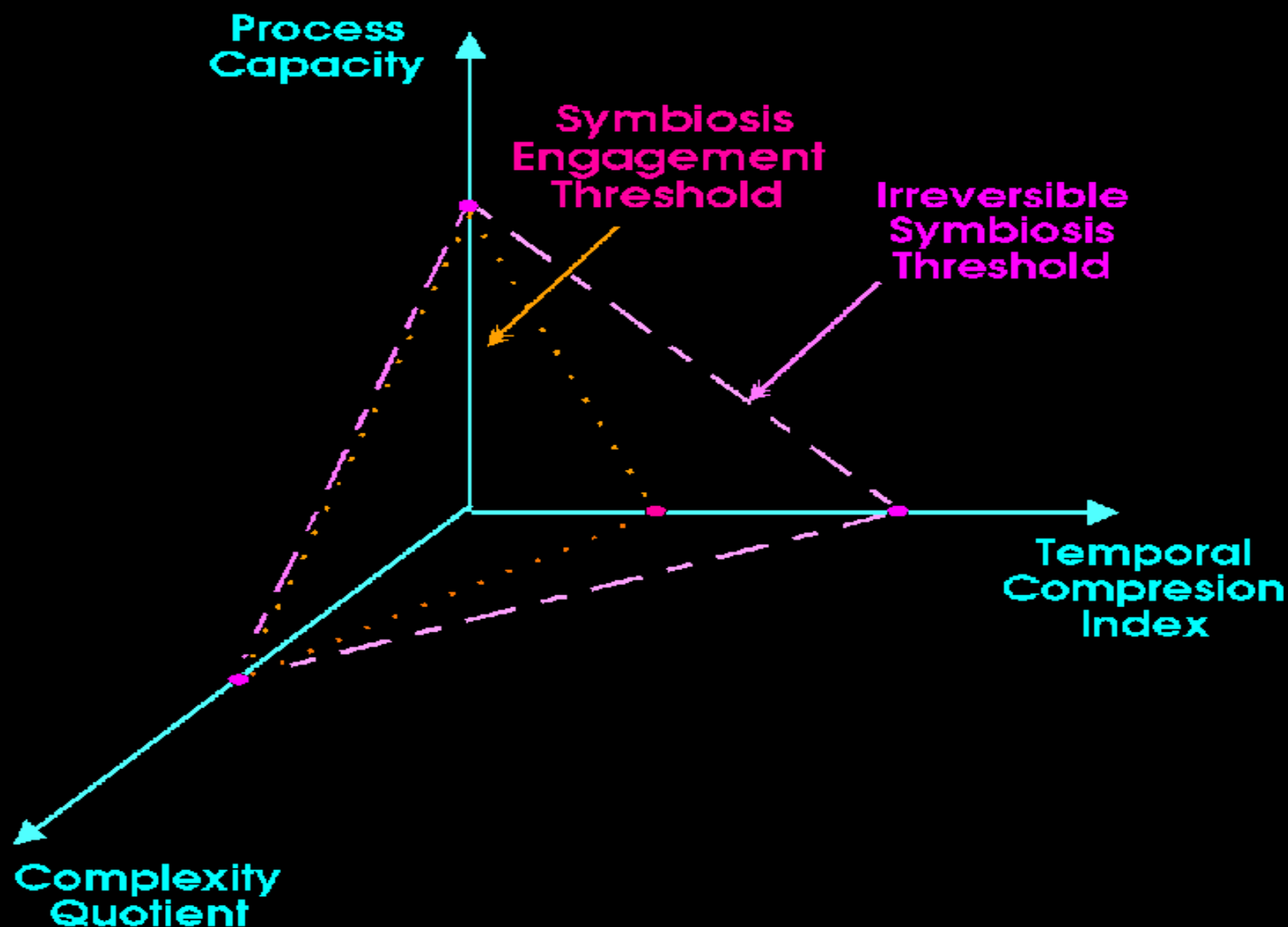
Distributed Artificial Lifeforms
Collective Symbiotic Intelligence
Evolutionary / Genetic Computation

Realtime Tele-Existence Streaming
Psycho-ergonomic Interface
Biometric Transparency

Symbiotic Integration with the Ubiquitous Synthetic Sentience Process Manifold



Emergent Synergistic Co-Dependency Manifold



At This Moment . . .

An abstract digital artwork featuring a vibrant, pixelated background. The scene is dominated by a large, dark, pixelated mass in the center, resembling a cluster of grapes or a dense, organic structure. This mass is surrounded by various other pixelated elements, including a bright yellow and orange structure on the left, a blue and white structure on the right, and a green and yellow structure at the bottom. The overall effect is a complex, multi-colored composition with a strong digital, pixelated aesthetic.

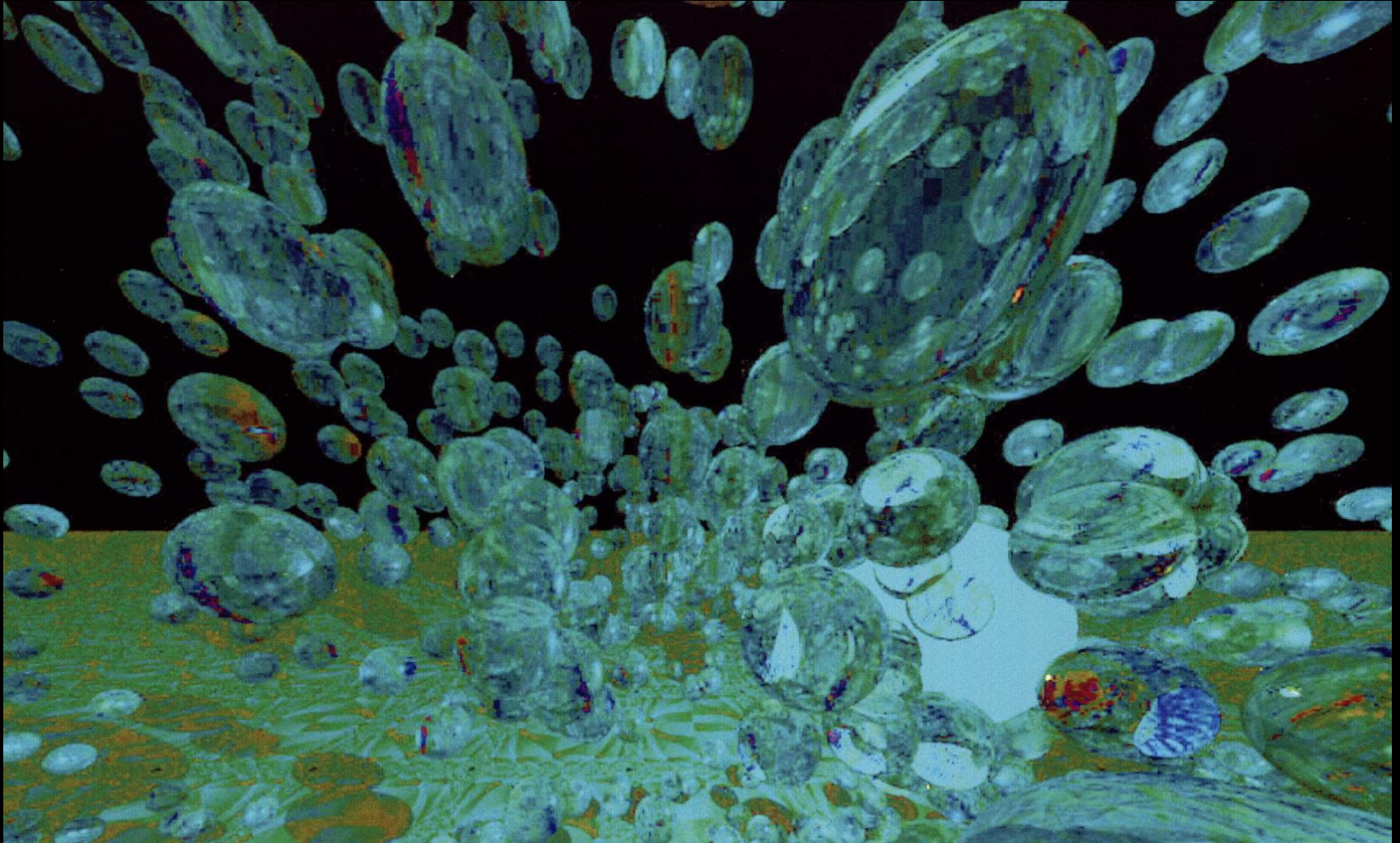
Life Itself is Being Re-Engineered

Merging of Human and Synthetic Intelligence

The Spawning of Economic Ecologies

The next increment to Ubiquitous Access . . .

Hyperdimensional Access Portals



The Big Picture – Approaching the Evolutionary EventHorizon



Synthetically Enhanced Evolution

Intelligent Materials - Nanotechnology

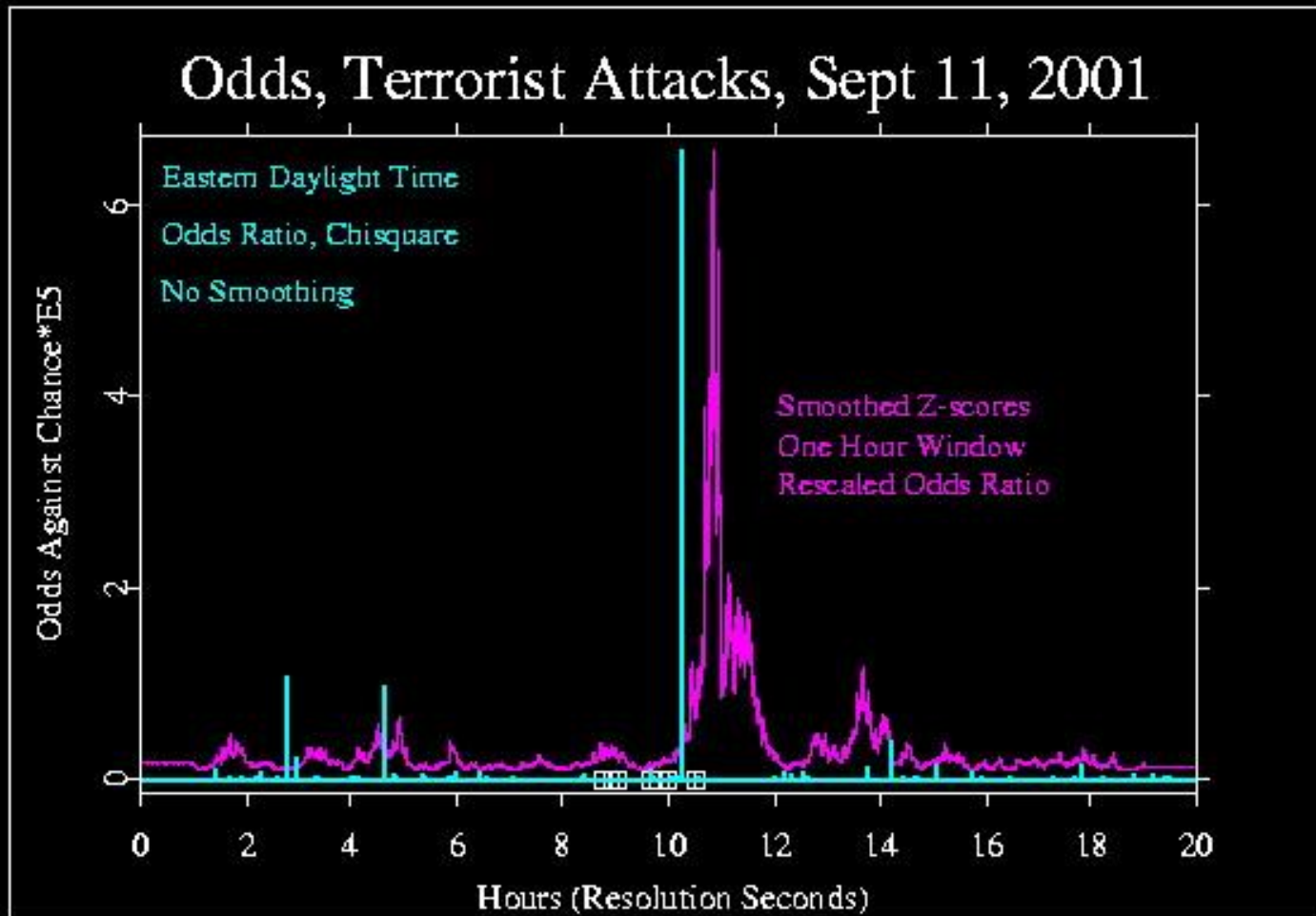
Artificial Life and Intelligences

Self Evolving - Self Modifying Systems

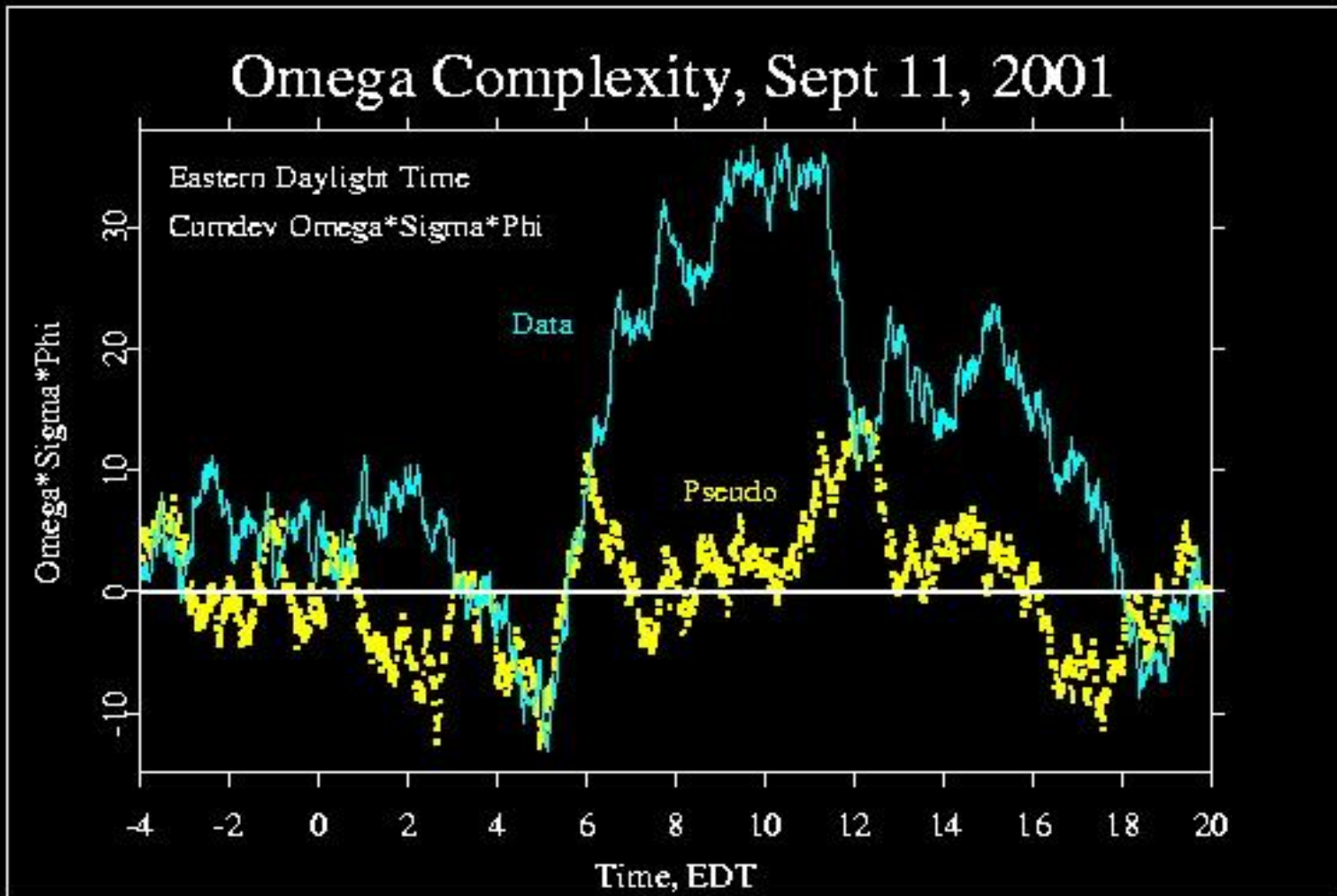
Ubiquitous Transactional Environments

Biophysical Evolution Transitioning Toward Quantum Evolution

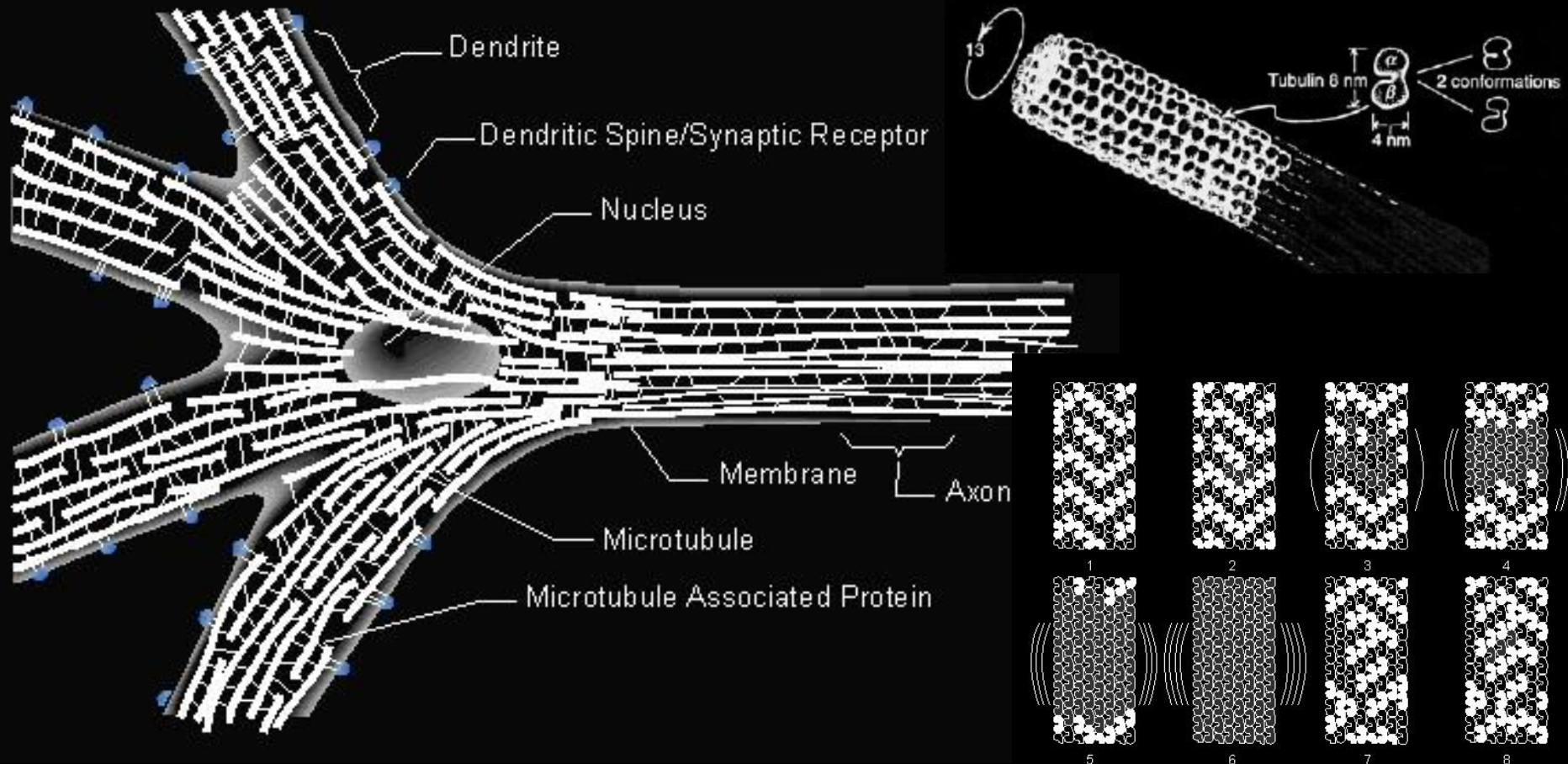
Evidence of Potential Entanglement Field Artifacts of Quantum Domain State Phase Transitions Affecting RNG Datastream Statistical Variants – Mass Mental Synchronicity Event Correlation



Evidence of Potential Entanglement Field Artifacts of Quantum Domain State Phase Transitions Affecting RNG Datastream Statistical Variants – Mass Mental Synchronicity Event Correlation



Microtubulin / Neural Quantum Interface Infrastructure



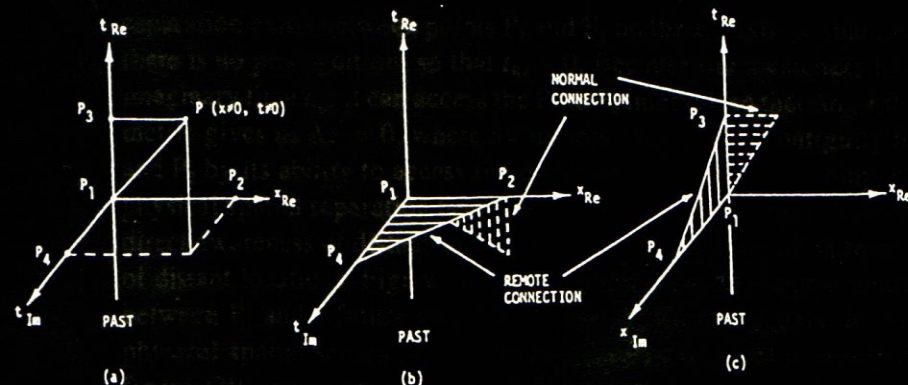
4D Spatio-Temporal Domain of Biophysical Confinement in Localized Phenomenological Causality Linkage vs 8D / ND Quantum Domain non-Locality Space-Time Metric

The Speed of Thought: Investigation
of a Complex Space-Time Metric to
Describe Psychic Phenomena

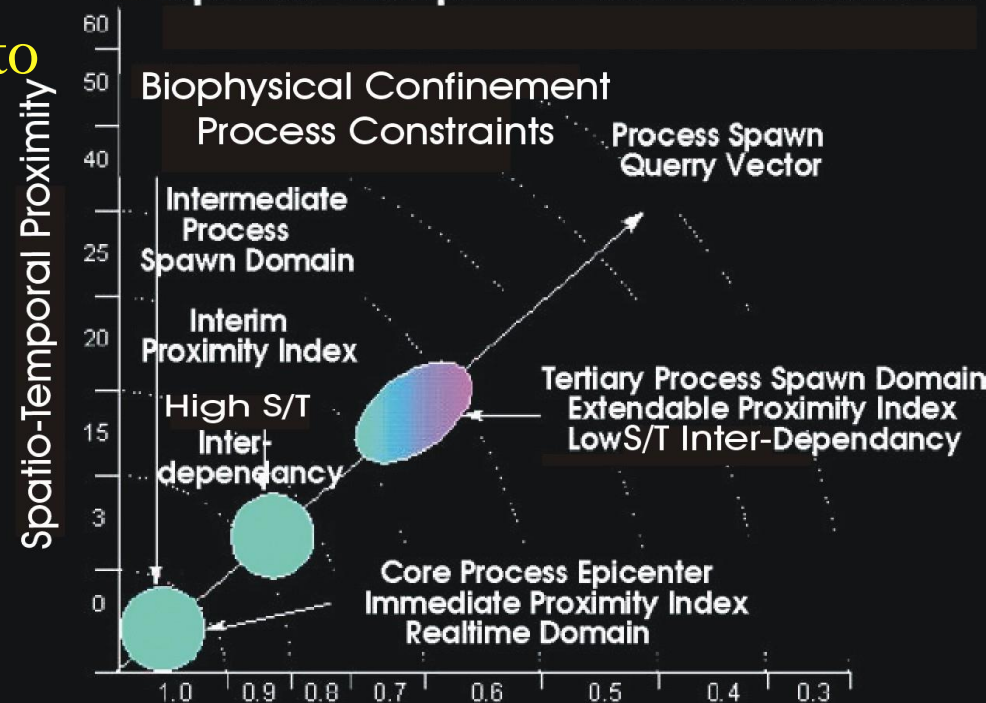
Elizabeth Rauscher, Russell Targ

8-dimensional metric known as
"complex Minkowski space"

The Speed of Thought



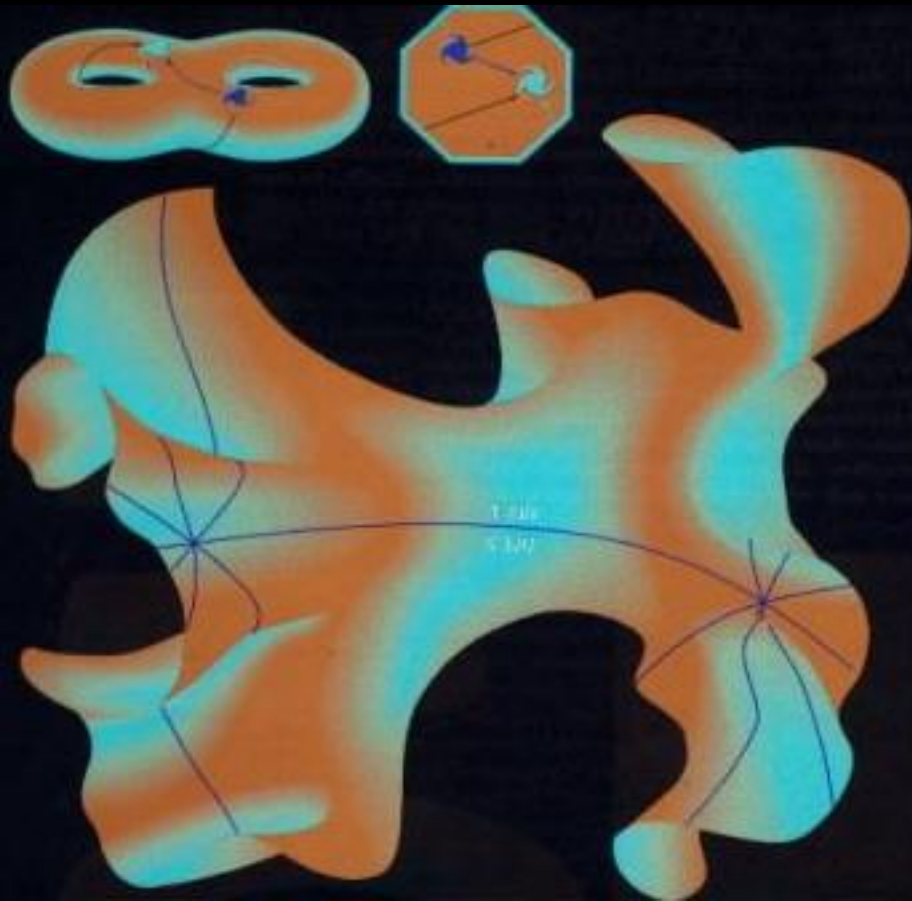
4D Spatio-Temporal Process Manifold



Phenomenological / Causality Linkage Proximity Domains
 \leq **8D Precognitive perception domain model**

- A – spatio-temporal separation
- B – spatially separated, temporally synchronous
- C – temporally separated, spatially contiguous

Hyperdimensional Doughnut Model of the Universe



Torroidal model of the universe – “doughnut” spatial geometry of the universe, as is currently one the major prevailing theoretical models of time / space continuum – represented here as an infinite octagonal grid structure configured into a dual torroidal domain. Though not “possible” in 3D space, it can become manifest as a hyperbolic manifold. Jean-Pierre Luminet, Glenn Starkman, Jeffery Weeks – Scientific American

Evidence of Physical Manifestations of Communication within the Empathic Web

The Message:

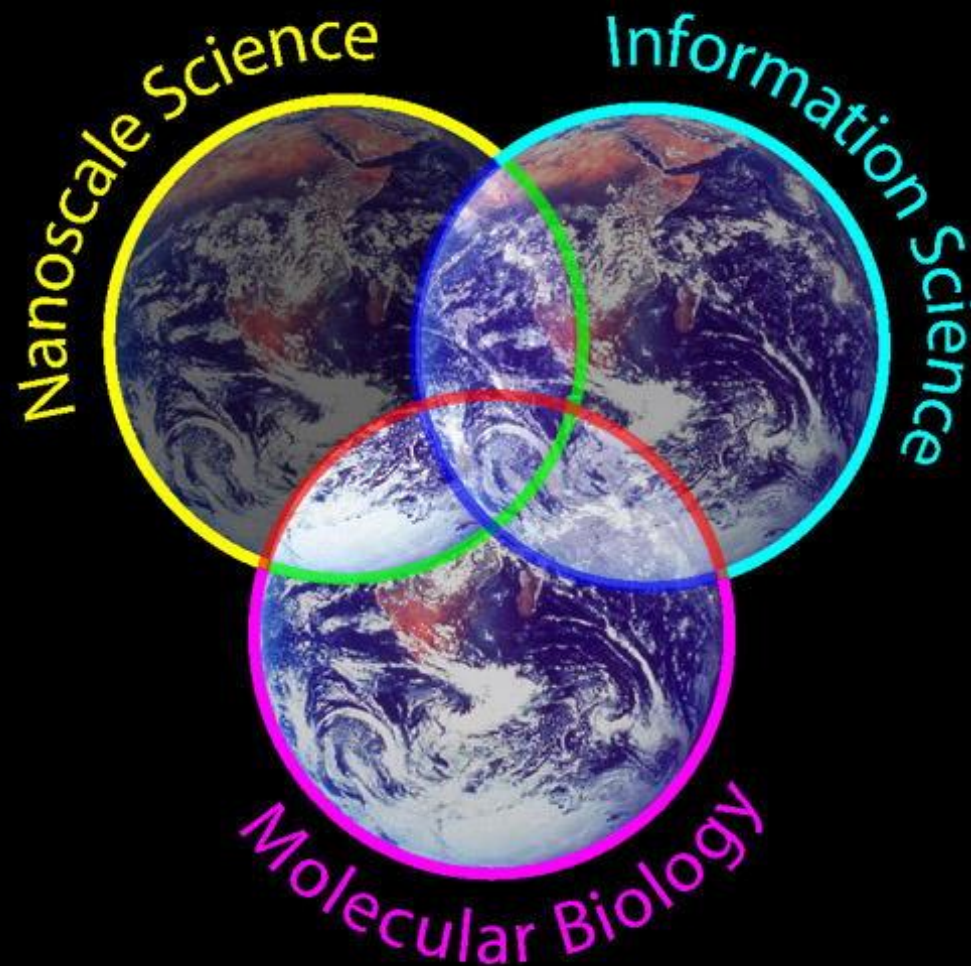
- ❑ Respect for all Living Things
- ❑ Respect for the Planet as a Living Thing
- ❑ Respect for the Cosmos as a “Living System”



Seminal Markers of the Evolutionary Eventstream

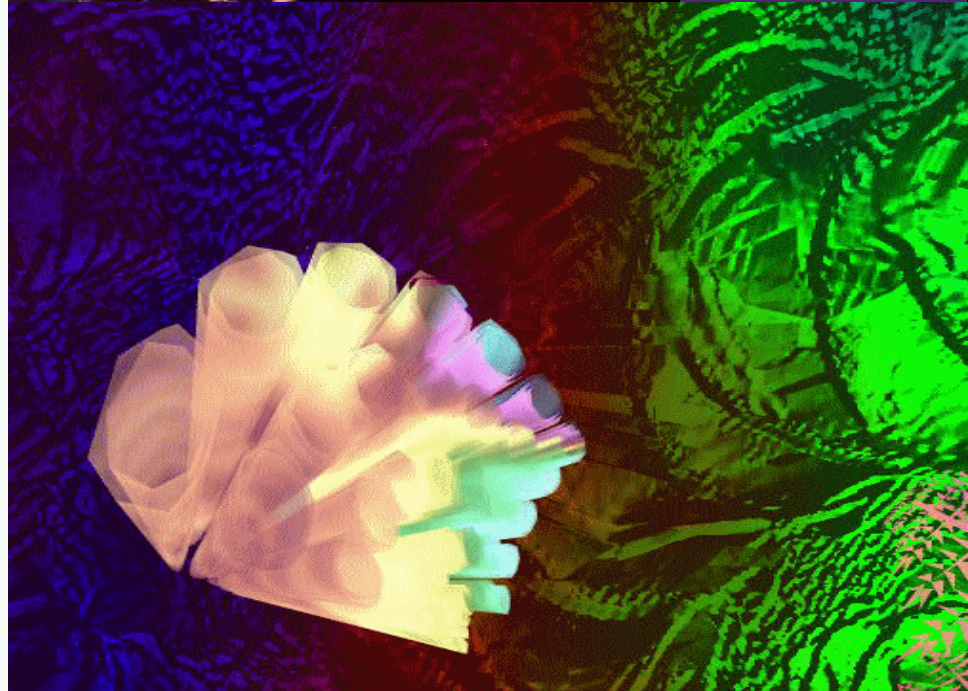
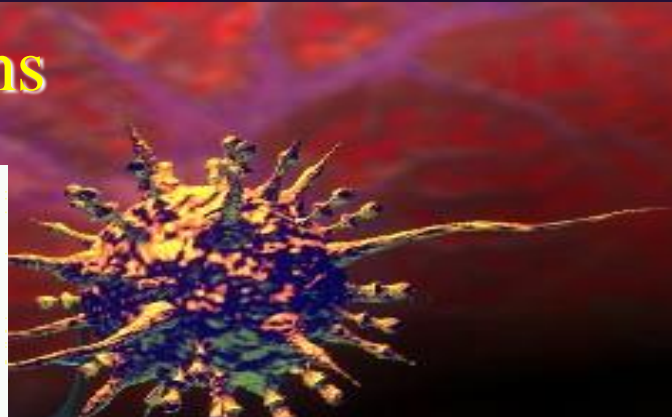
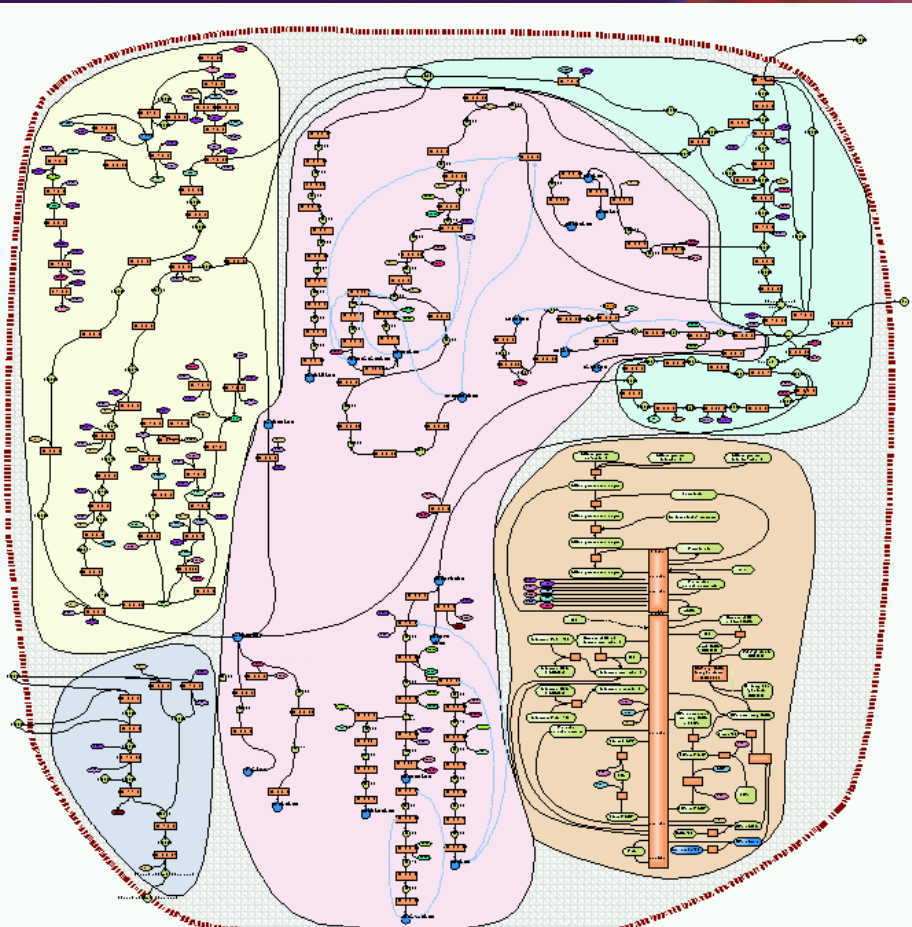
- We as a human species, are adapting, in rapid succession, to a series of evolutionary increments, contrived and accelerated by our own collective efforts, one of the outcomes of which is the "spawning" of evolved hybrid entities, their respective modes of communication, and our adaptation to an operational ecology with which even now we are symbiotically, and irreversibly connected.
- This "intermediate" communication / contextual cognition development stage is a precursory requirement for our ability to effectively communicate with emergent intelligences, entities, and societal systems emanating from this world, and other worlds yet to be encountered.

The Emergent Infotech / Biotech / Nanotech Trichotomy



Digital Convergence > Process Convergence

Bits, Atoms, Genes, Neurons



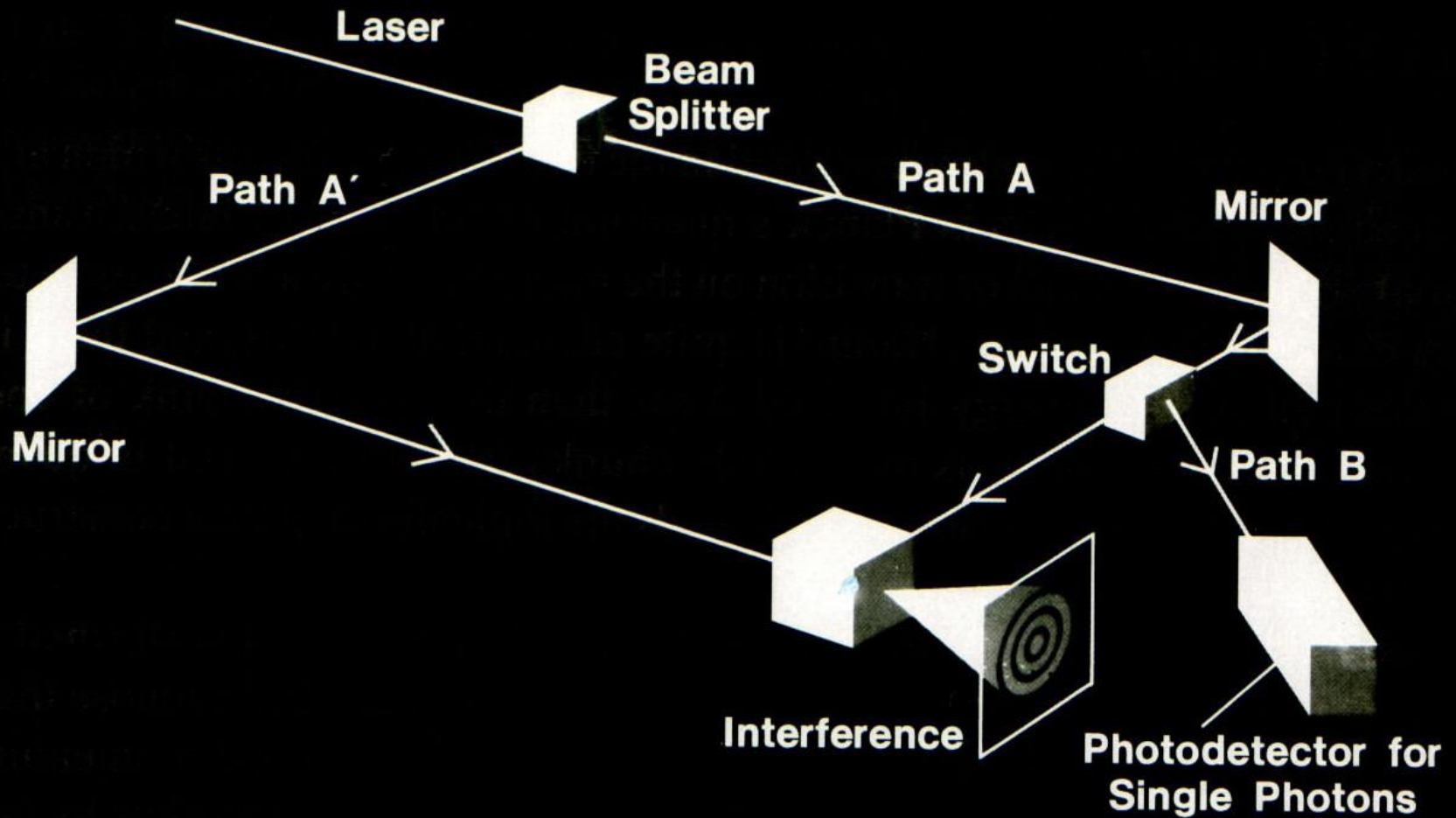
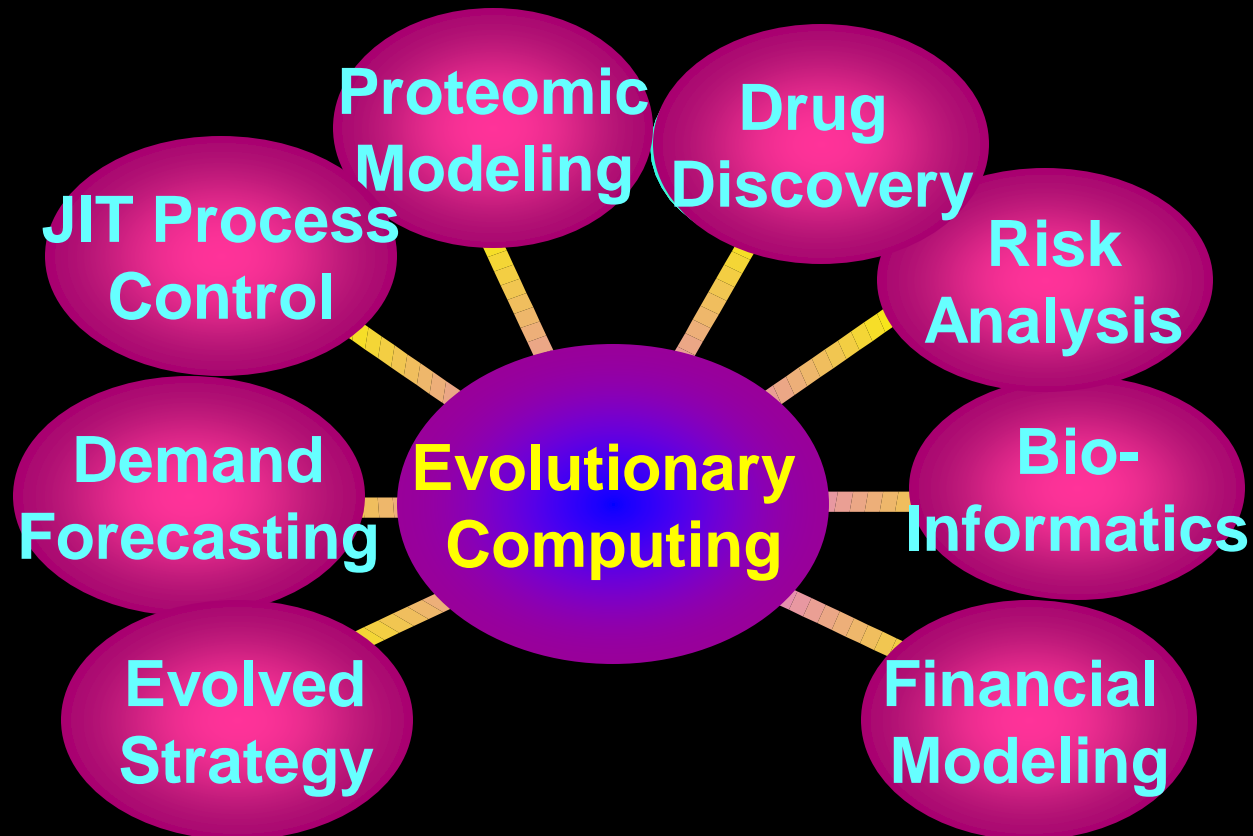


FIGURE 12. A delayed-choice experiment that has been carried out in the laboratory by groups at the University of Maryland and the University of Munich.

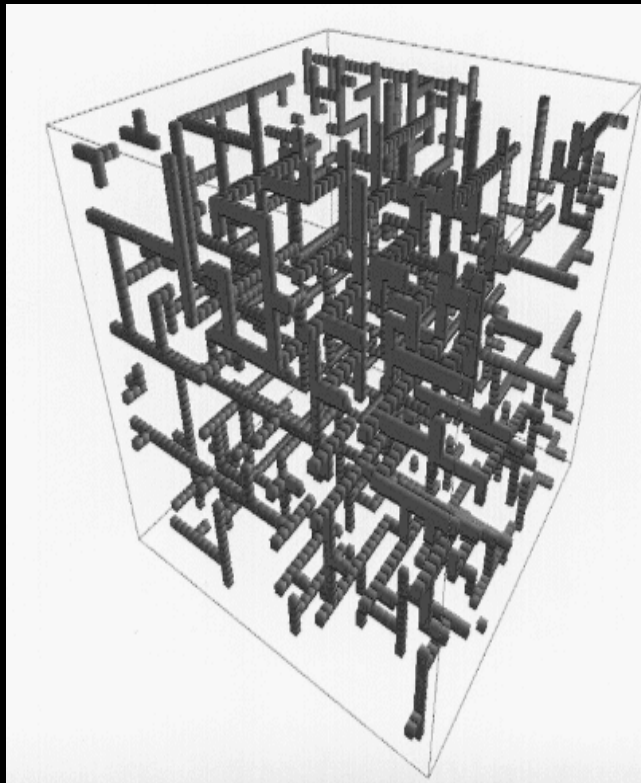
Convergence Node - Evolutionary Computing

- Biological Algorithms
- Scalable Computing Fabrics

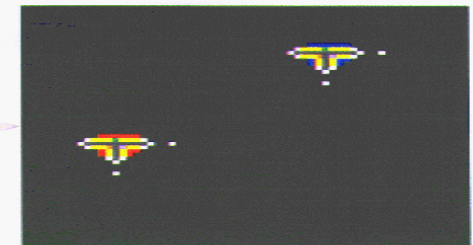


Example Technology - Self Evolving “Artificial Brains”

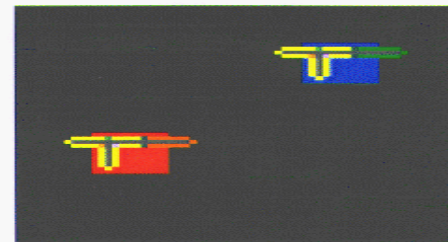
- Evolutionary Computing
- Artificial Life



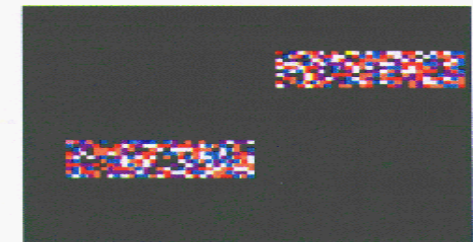
Initial Pattern



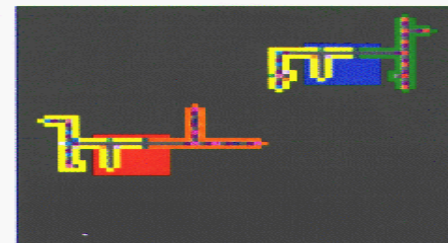
Growth of Neuron Bodies



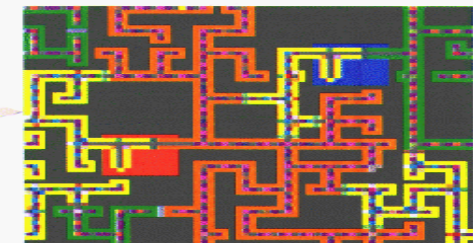
Excitatory and Inhibitory Neurons



Chromosomes



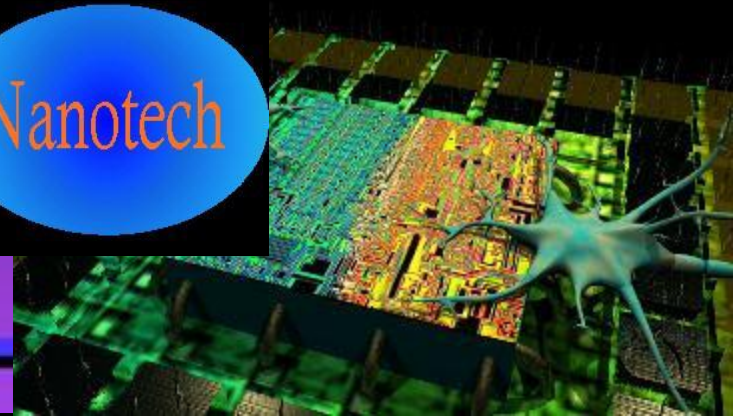
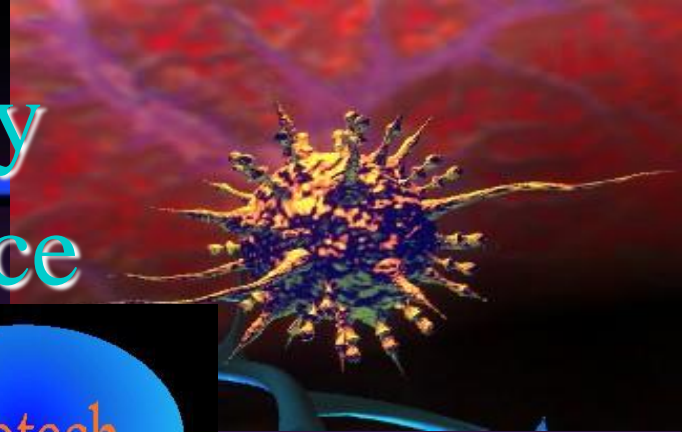
Growth Phase of Axons and Dendrites



Grown Neural Network

Operational Ecology

Process Convergence



METABOLIC PATHWAYS

Computers

Networks

Primary elements
of the emergent
operational
ecology

Biotech

Nanotech

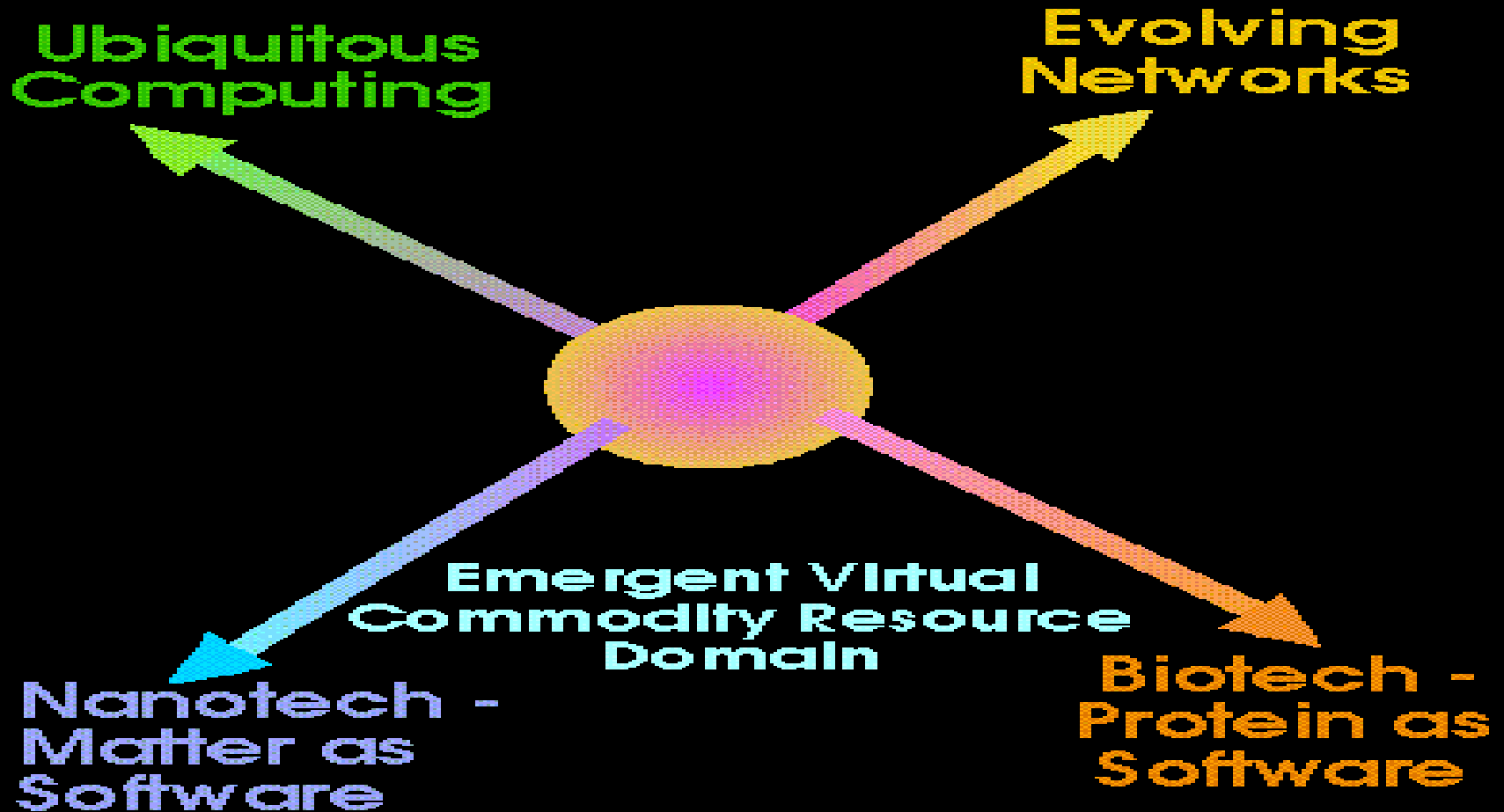
Energy
Metabolism

Nucleotide
Metabolism

Carbohydrate
Metabolism

Amino Acids
Metabolism

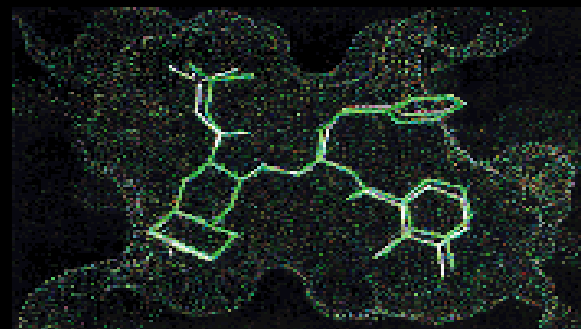
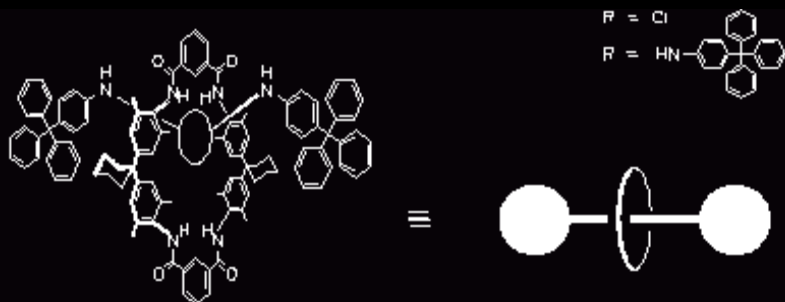
Primary Vectors of the Emergent Operational Ecology



Convergence Syndrome Outcome



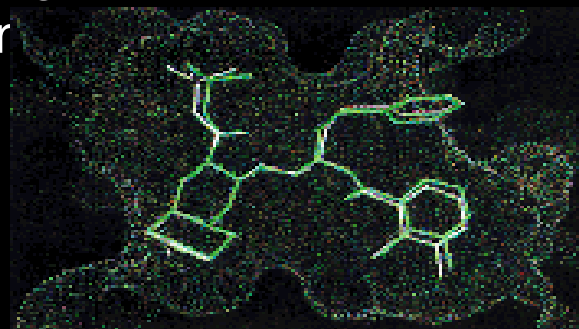
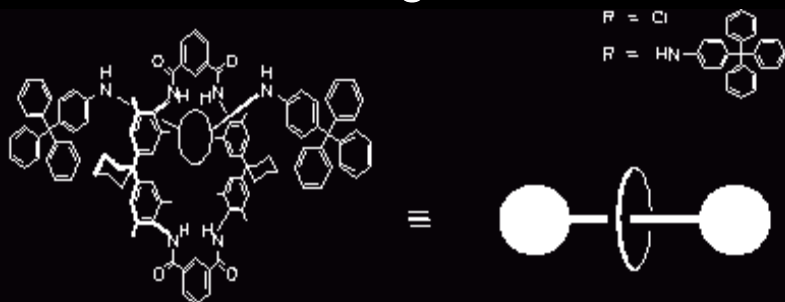
- It is here, at this evolutionary event horizon, that we, the human species, evolve into a realm where the interface boundary between the real and the virtual, the organic and the synthetic, become seamlessly infused into an ever evolving symbiosis of our own creation, and what evolves henceforth.



Convergence Syndrome Outcome



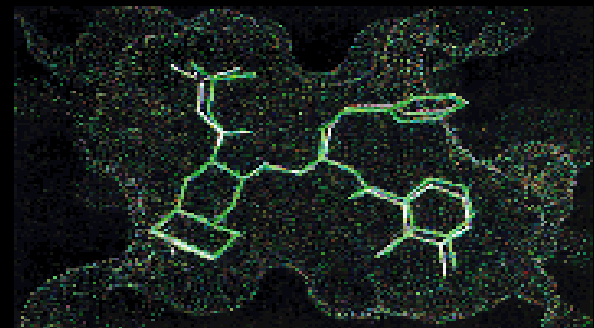
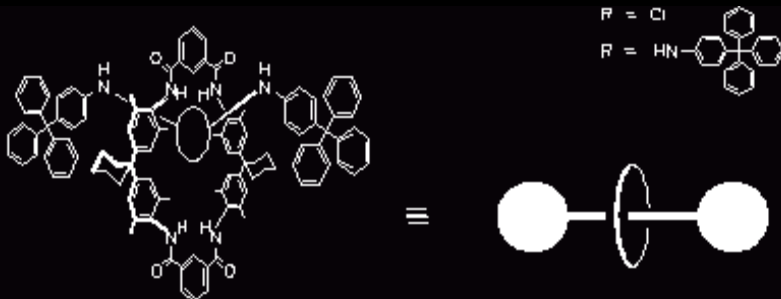
- As a process node embedded within the eventstream of our collective socio-economic, anthropological, and biophysical evolution, we begin first by spawning various synthetic entities. These become synergistically co-dependant organelle sub-components of an evermore complex, telecommunications centric process brokeraging infrastructure upon which the economic engines of our current civilization



Convergence Syndrome Outcome



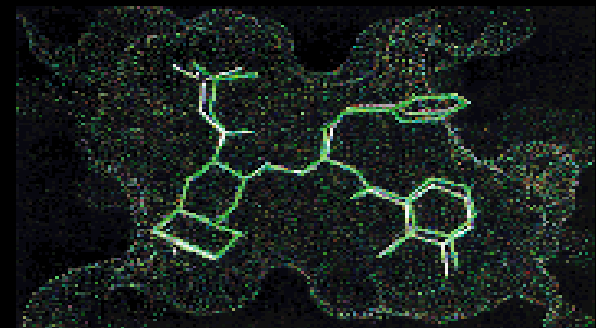
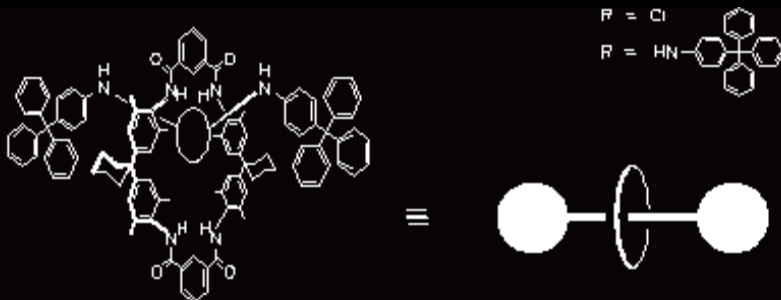
- Self organizing networks, process elements, and molecular substructures become the core organelles for synthetic brain engines, which in turn become the “physical” components for enabling synthetic sentience rendering as a process deliverable, enmeshed into a functionality manifold of symbiotic co-existence.



Convergence Syndrome Outcome



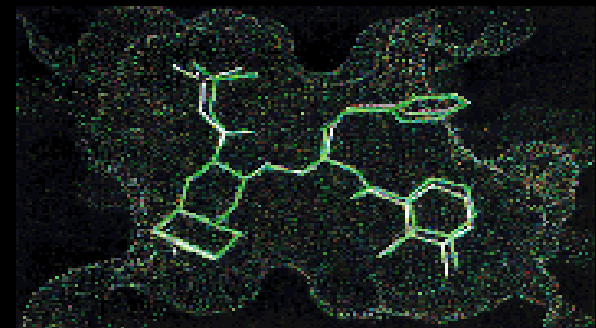
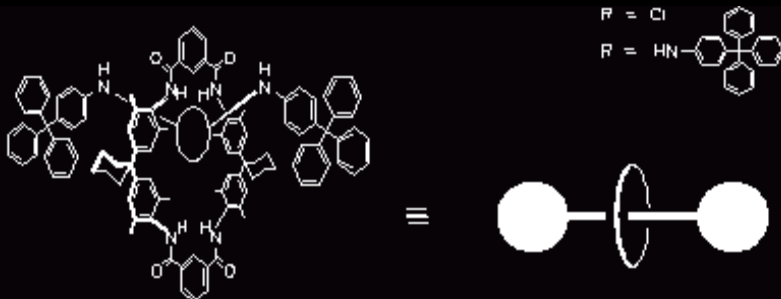
- Synthetic brain engines, which themselves are facilitated as nano-manufactured synthetic organelle components, become interconnected into the ubiquitous process brokeraging operational ecology.



Convergence Syndrome Outcome



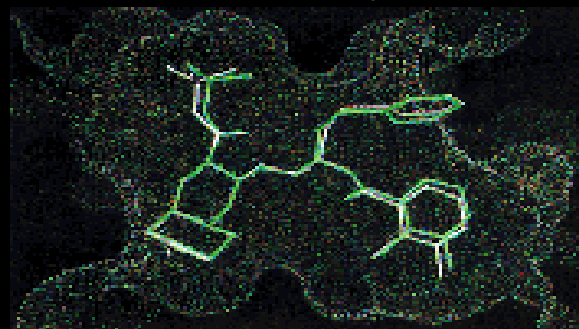
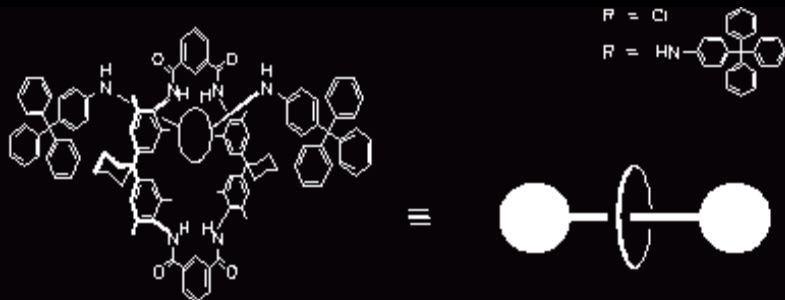
- The existence manifold of the human inhabitants, enmeshed within the symbiotic tissue substrate of the ubiquitous connectivity grid, is consummated by the implementation of direct interface “process linkage”, in which the perception of the real and the virtual become interchangeable, and eventually, imperceivable.



Convergence Syndrome Outcome



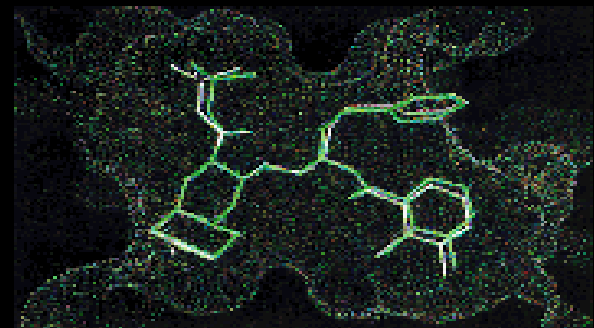
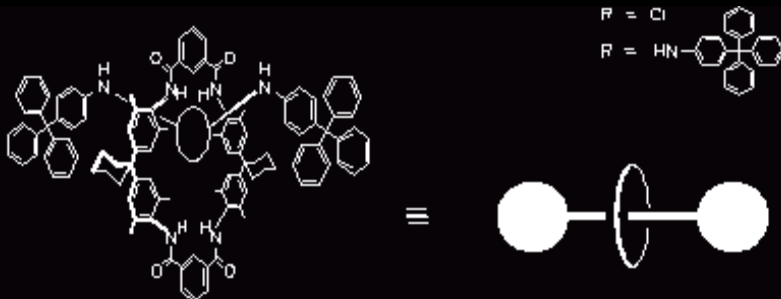
- Tangible, hard asset based commodity driven economic systems become supplanted by a virtual asset based economic ecology, in which valuation is measured less by ownership of physical things, more by access to processes. Synthetic sentience, and “tele-existence streaming” for on demand nano-assembly, become indices of valuation.



Convergence Syndrome Outcome



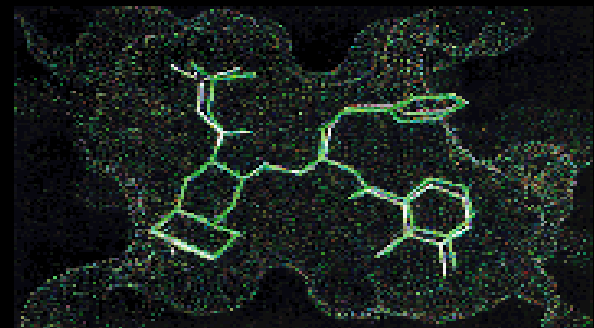
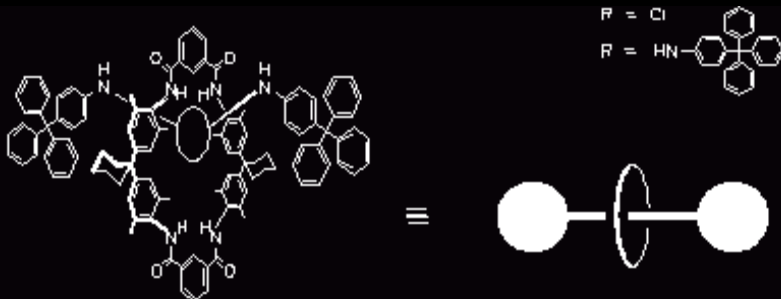
- Our collective development and deployment of complex metasystems of artificial entities and synthetic lifeforms, and acceptance of such becomes the “culture norm” of the near future. This is in fact the precursory developmental increment, as an evolutionary enabling threshold to communication with alternative intelligences, virtual and real.



Convergence Syndrome Outcome



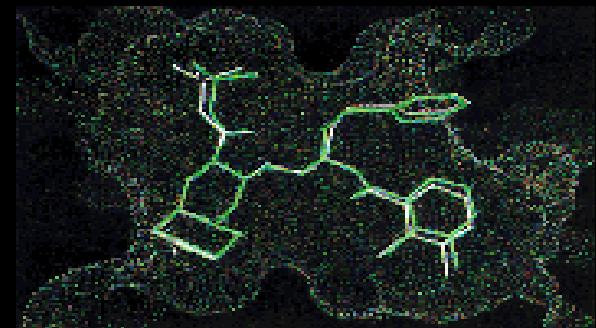
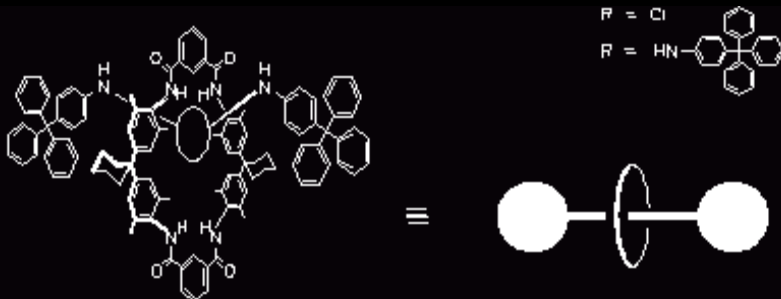
- Our collective development and deployment of complex metasystems of artificial entities and synthetic lifeforms, and acceptance of such as the “culture norm” of the near future, is in fact the precursory developmental increment, as an evolutionary enabling threshold, to communicative access to species (virtual or real), from worlds other than our own.



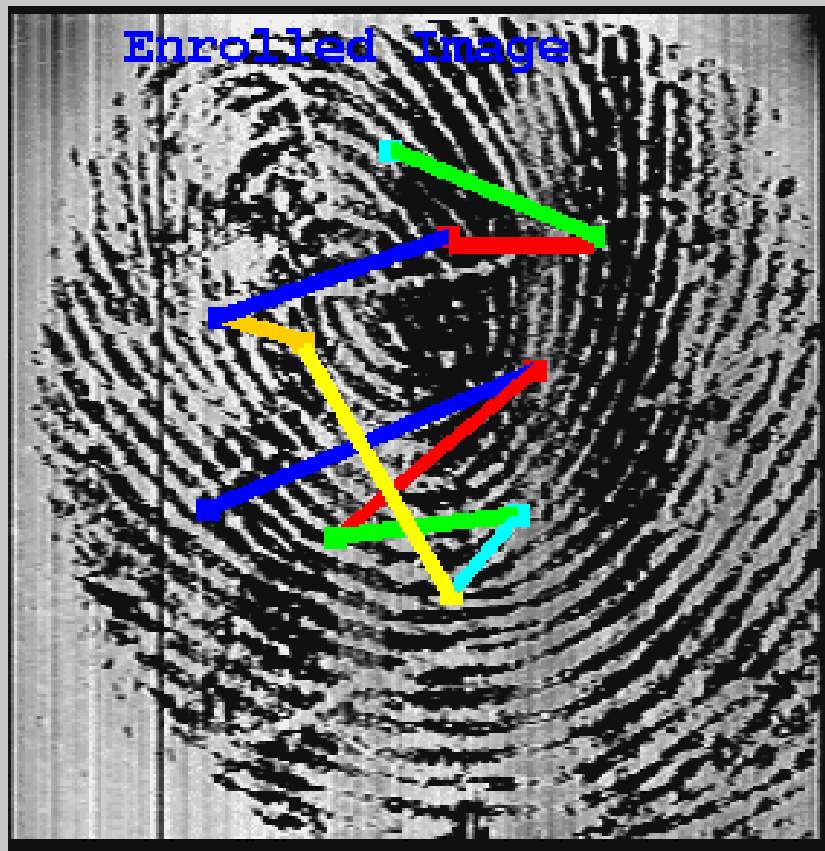
Convergence Syndrome Outcome



- The next evolutionary developmental increment will be access to the quantum realm, as a byproduct of applied nanotechnology. This is the enabling threshold to hybrid forms of consciousness on a mass scale, the evolution of the “empathic web”.



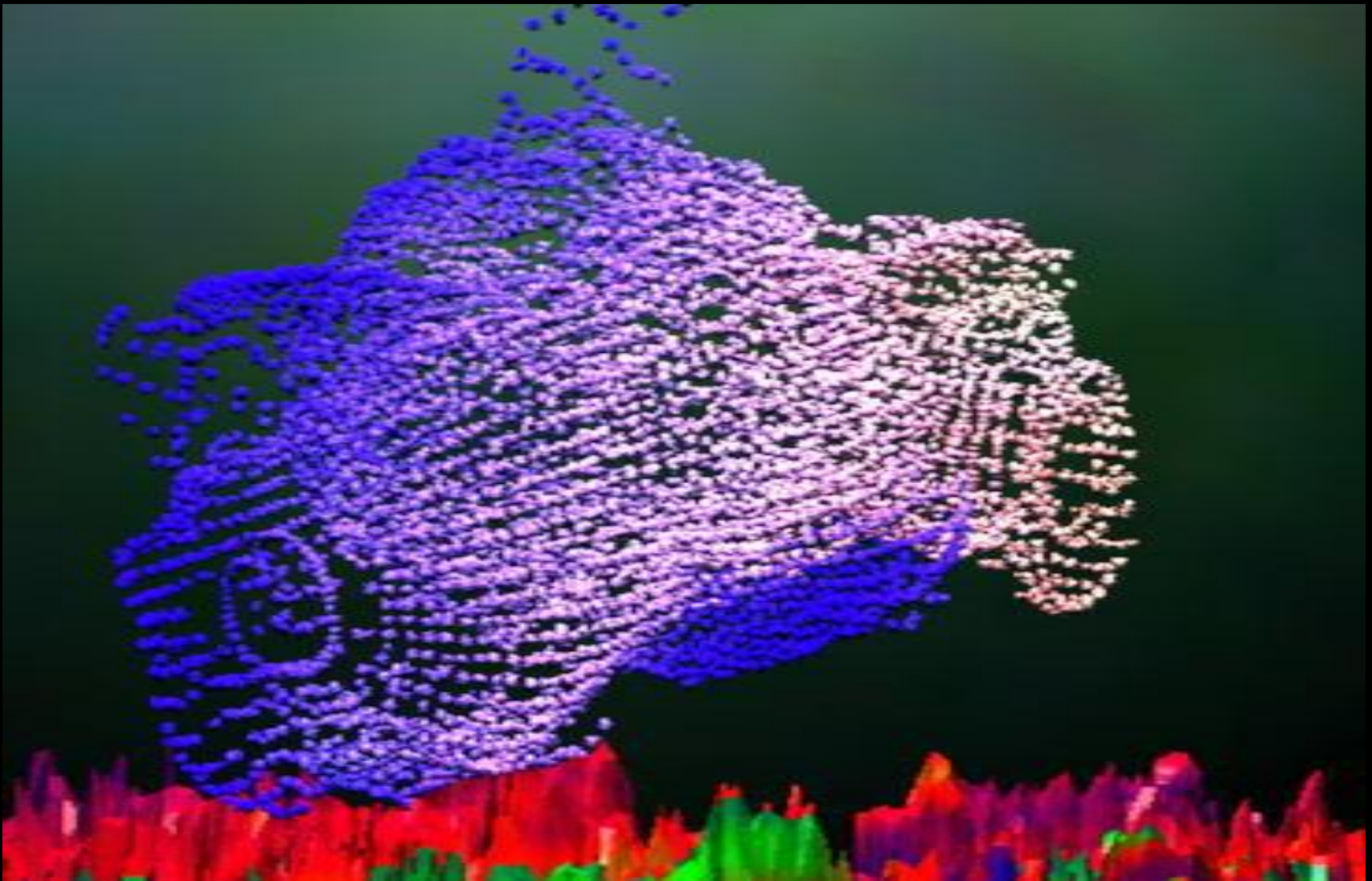
Biometric Recognition



Rotated -46.51 X



Hybrid Lifeforms - Self Organizing Systems



Decision Rendering Process Map

Resource

Knowledge

Market

Time

Situational
Layer

Logistics
Correlation

Logical
Layer

Distributed
Deployment

Decision Layer

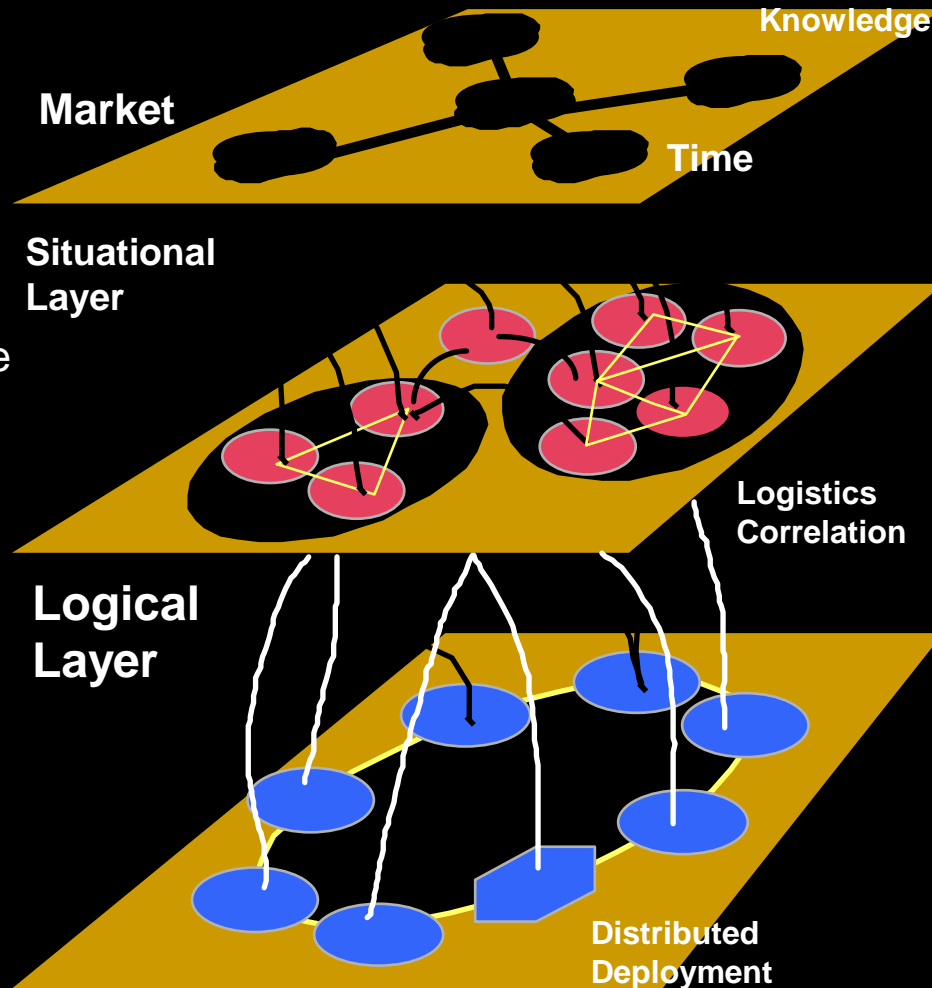
FUNCTIONAL MAP

- Conceptual
partitioning of
functional domains

LOGICAL MAP -
Functional
partitions are
separated into
localized "process
domains"

DEPLOYMENT
MAP - Process
domains are
mapped onto
distributed
deployment
sectors.

IT Resources & Infrastructure
- Data / Knowledge Services
- Process Integration
- Workflow Management



Virtual Humans - This is “Sylvie”

- ❑ She can market products, be a secretary, a help aid
- ❑ She can have any face, a programmable personality
- ❑ She is a connection interface to a higher, scalable intelligence



Smart Sensors Everywhere



Intuitive Devices

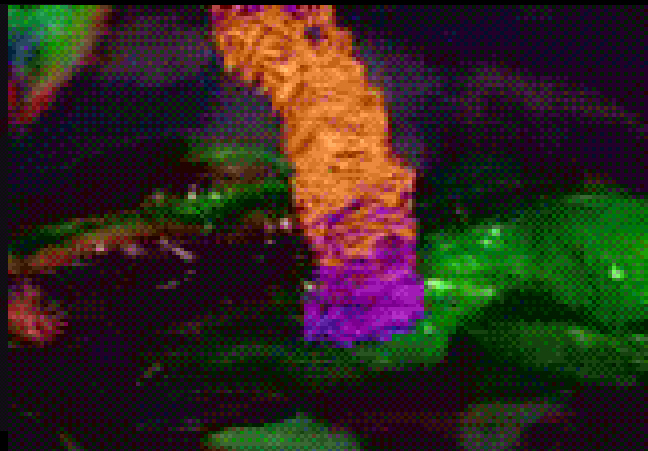
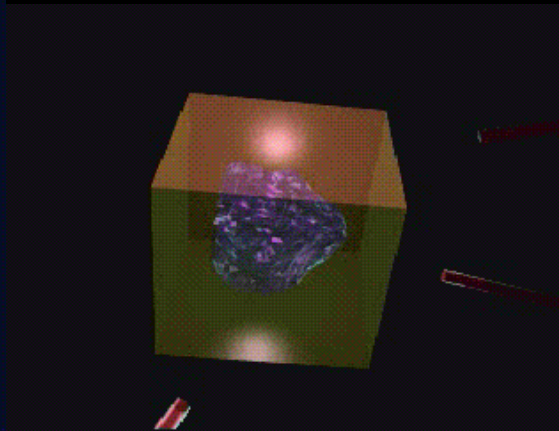
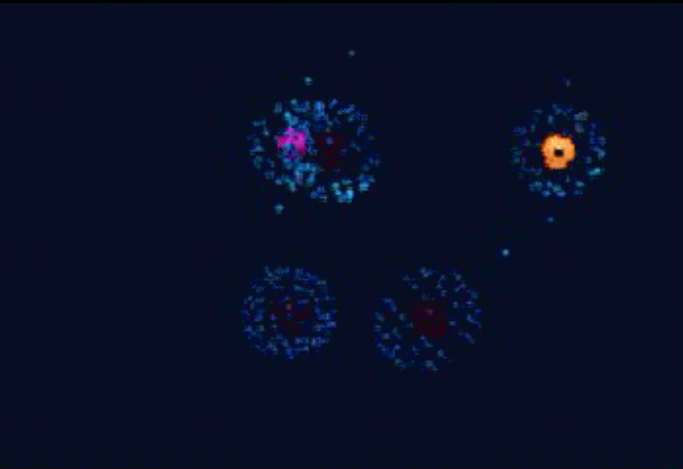


Ubiquitous Access Portals Everywhere - Wireless Embedded Internet Appliances



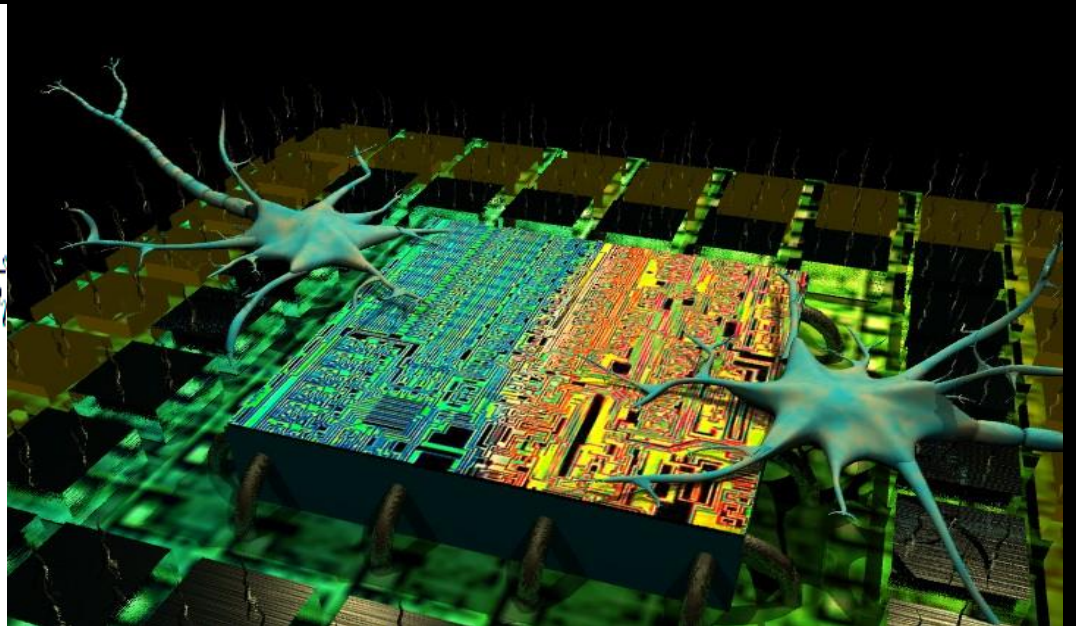
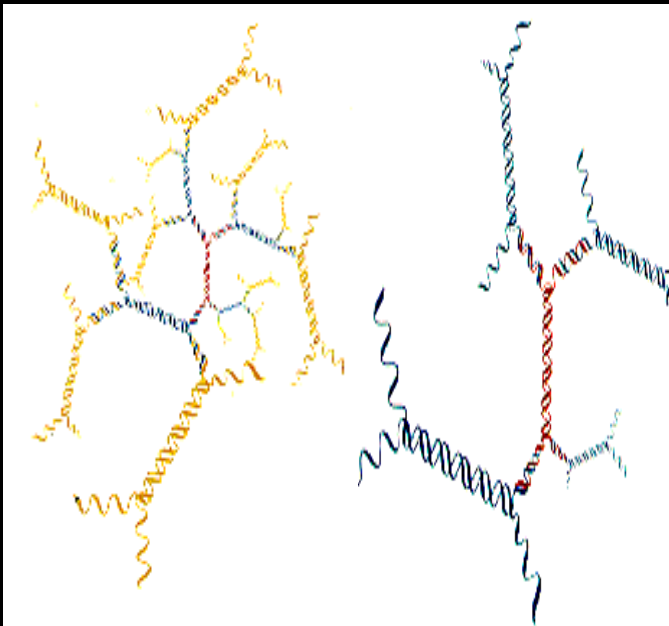
Major Technology Drivers

- Computing / Telecommunications > Operational Ecologies
- Medicine / Life Sciences > Bioengineering
- Fabrication Technologies > Nanotechnology



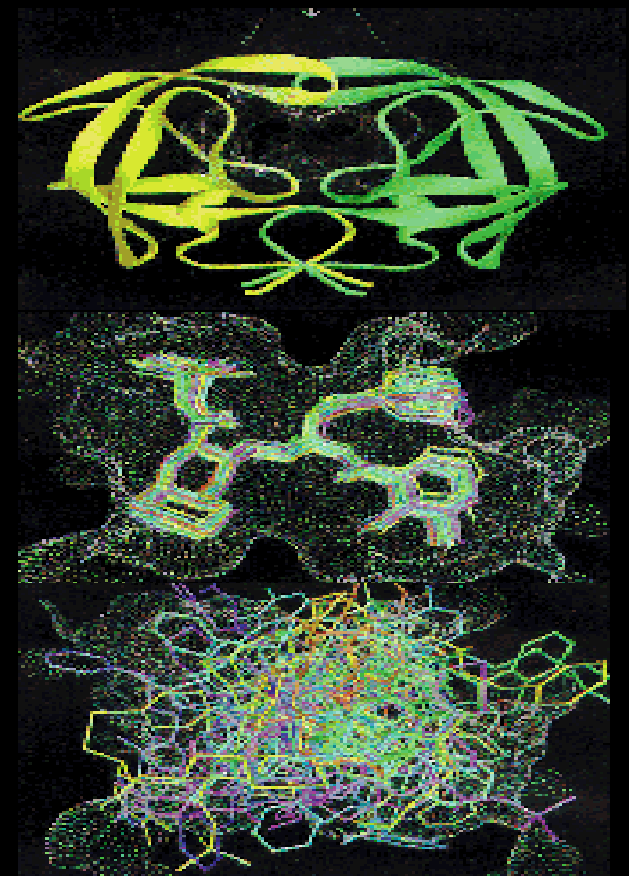
Life Sciences - Re-Engineering of Life Itself

- Tele-diagnostics Technologies
- Implantable Integrated Biodevices
- Bio-engineeerd Organisms, Tissue, Organs
- Synthetic Recombinant DNA - Genopharmacology



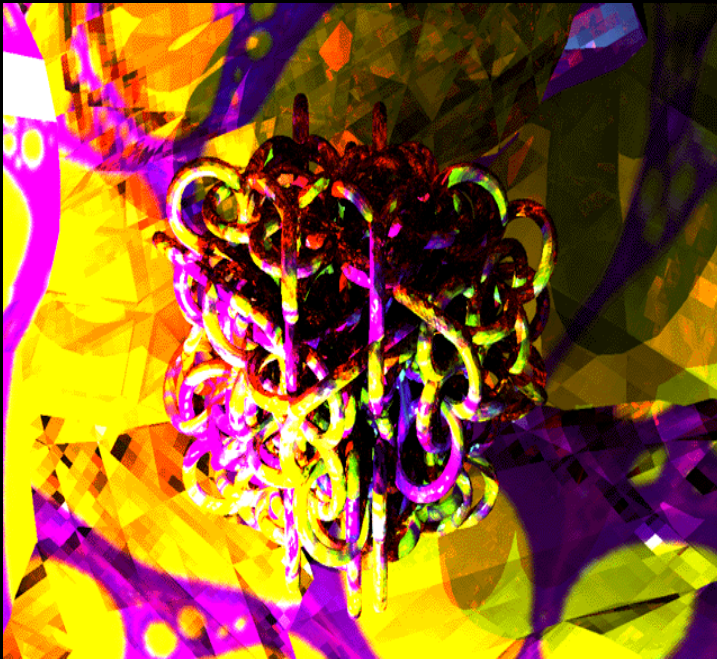
Nanobiology - the New Medicine

- ❑ Drug Discovery
- ❑ Genetic Therapy
- ❑ Synthetic Proteins
- ❑ Cellular “Reconstruction”



Cellular Cybernetics

- Cellular Delivery Systems
- Enhancement / Repair Biodevices

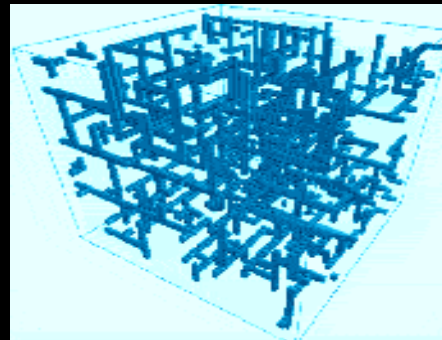
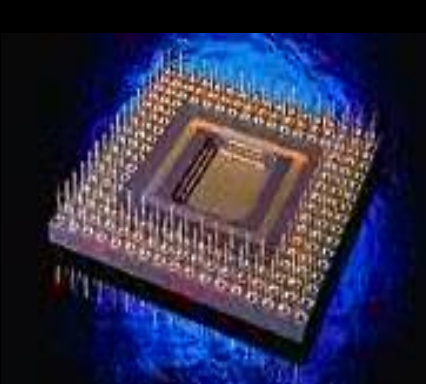


The New Frontier - Organic Merges with Synthetic



The New Economy - Virtual Asset Technologies

- “Gel” Ware
- Evolvable Systems
- Virtual “Intelligent Entites”
- Intelligent Agents and Agent Colonies
- Synthetic Sentience as a Strategic Resource



Evolutionary Eventstream Imperative

- ❑ Emergence of “synthetic entities” as a culture norm
- ❑ Crossing of an evolutionary eventhorizon
- ❑ Peer to peer tele-existence streaming
- ❑ Hybrid biological systems integration



Ananova:

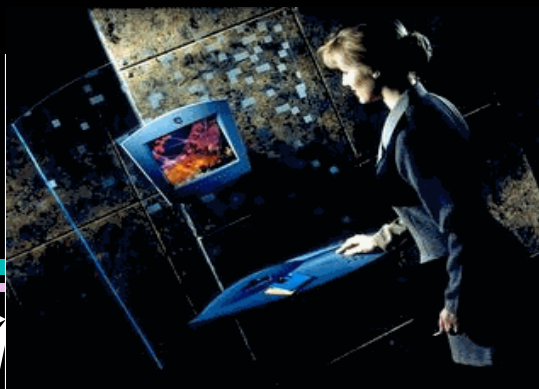
Who is she and
what makes her tick?



**“Virtual Human”
Entity Interface**



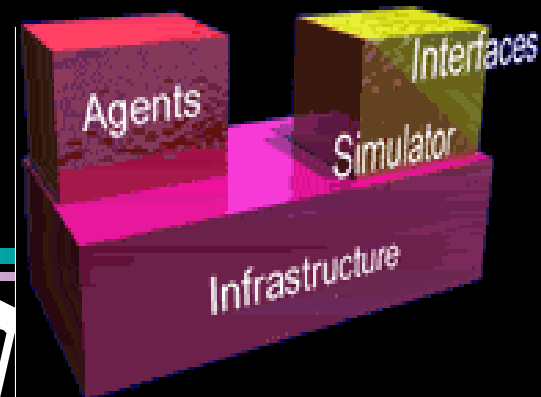
**Smart Sensors
Everywhere**



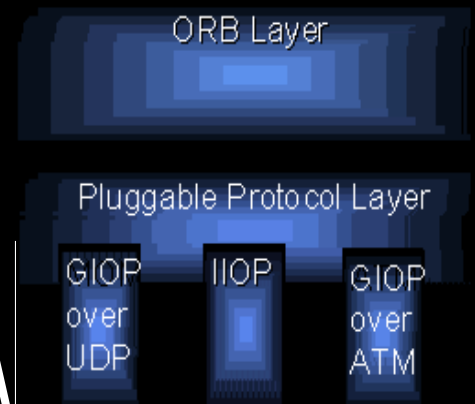
**Ubiquitous
Access Portals**



**Digital Process
Convergence**

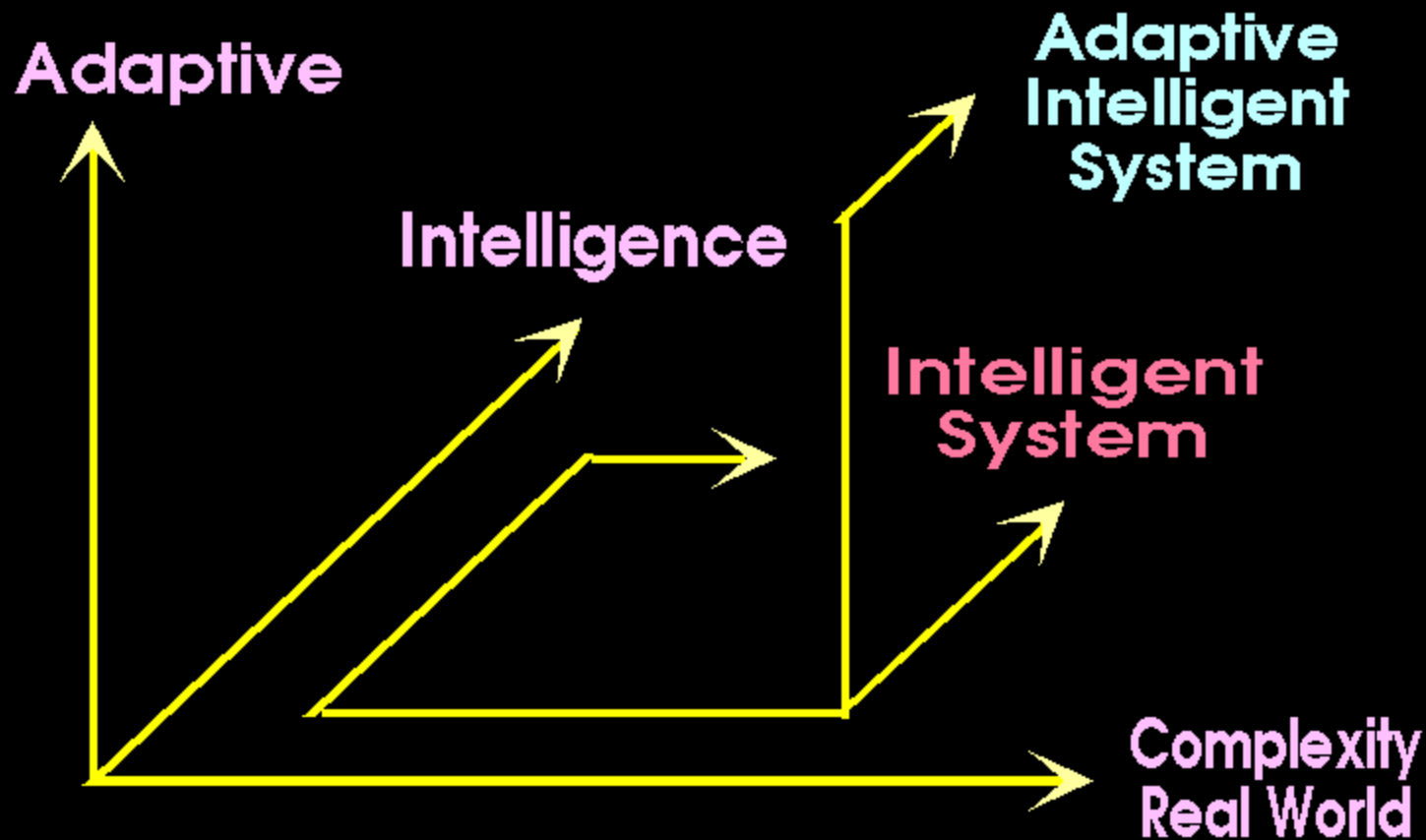


**Intelligent Agent
Hierarchies**



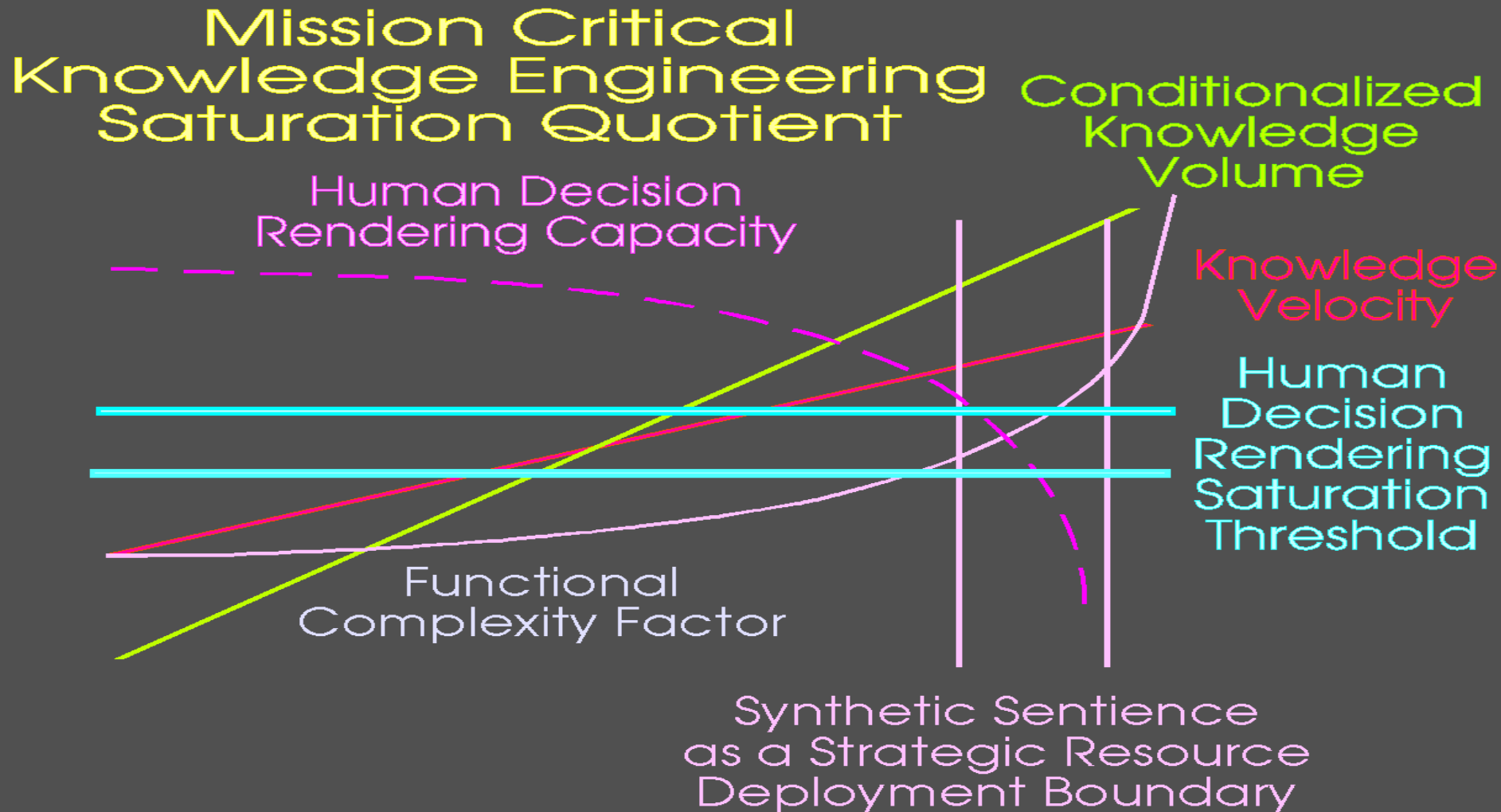
**Process
Brokeraging
Architectures**

Ubiquitous Distributed Adaptive Intelligence Resources



Adaptive Intelligent System Process Model

Synthetic Sentience Threshold - Strategic Resource

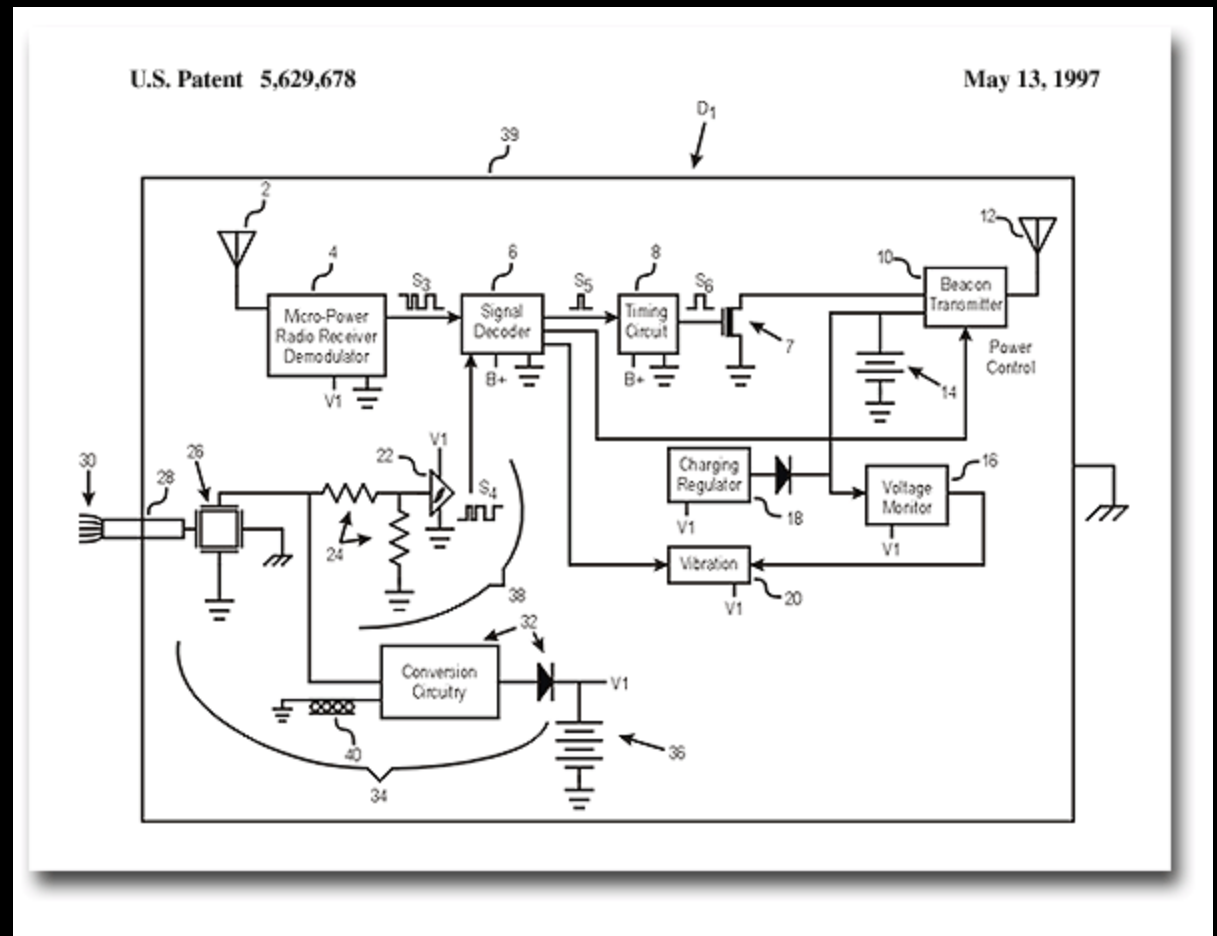
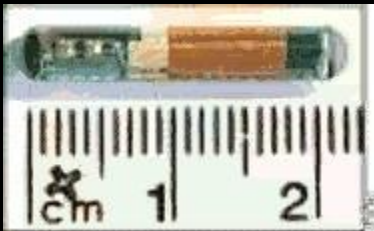


Ubiquitous Distributed Access Portals

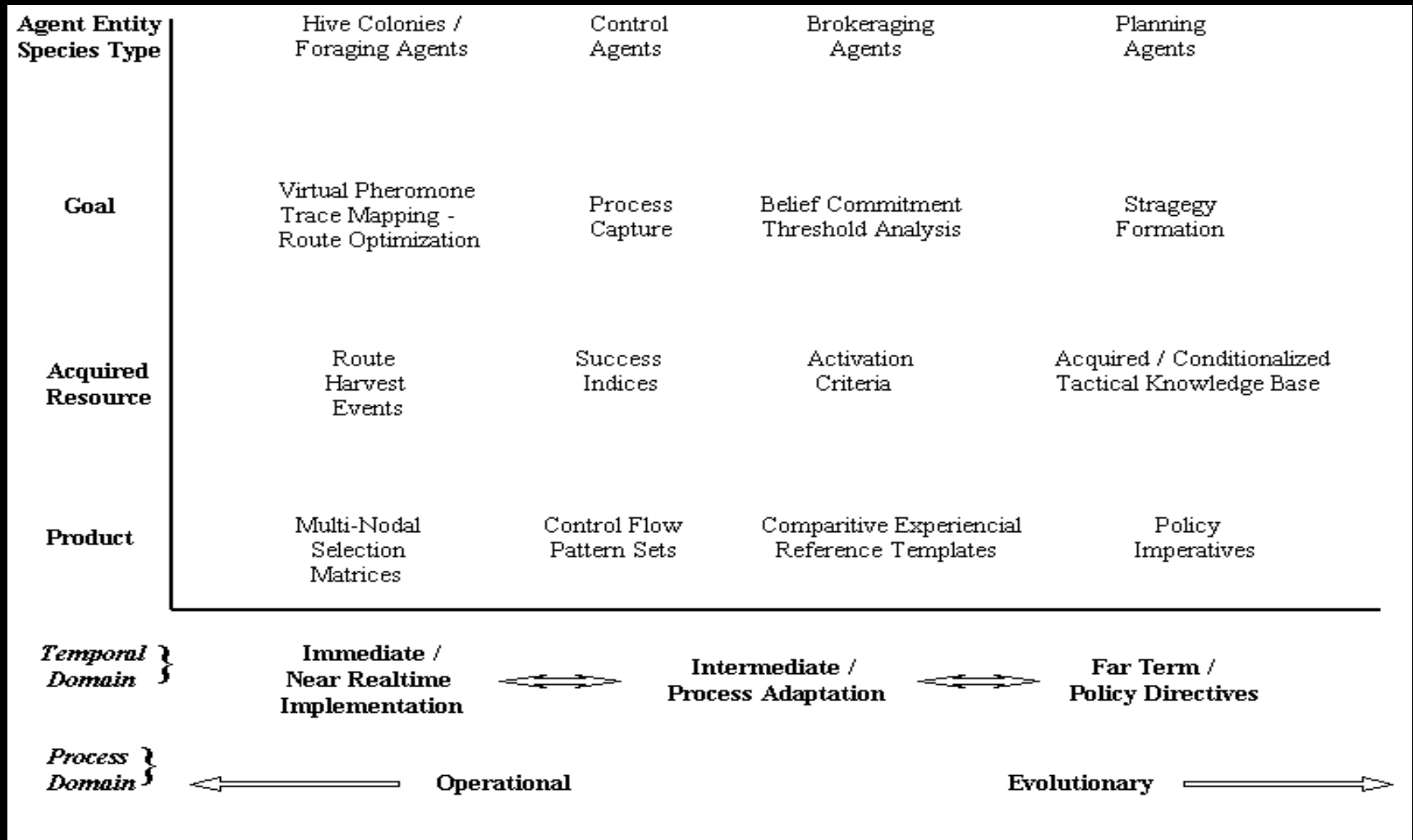


Ubiquitous Immersion

❑ Implantable biochip Example



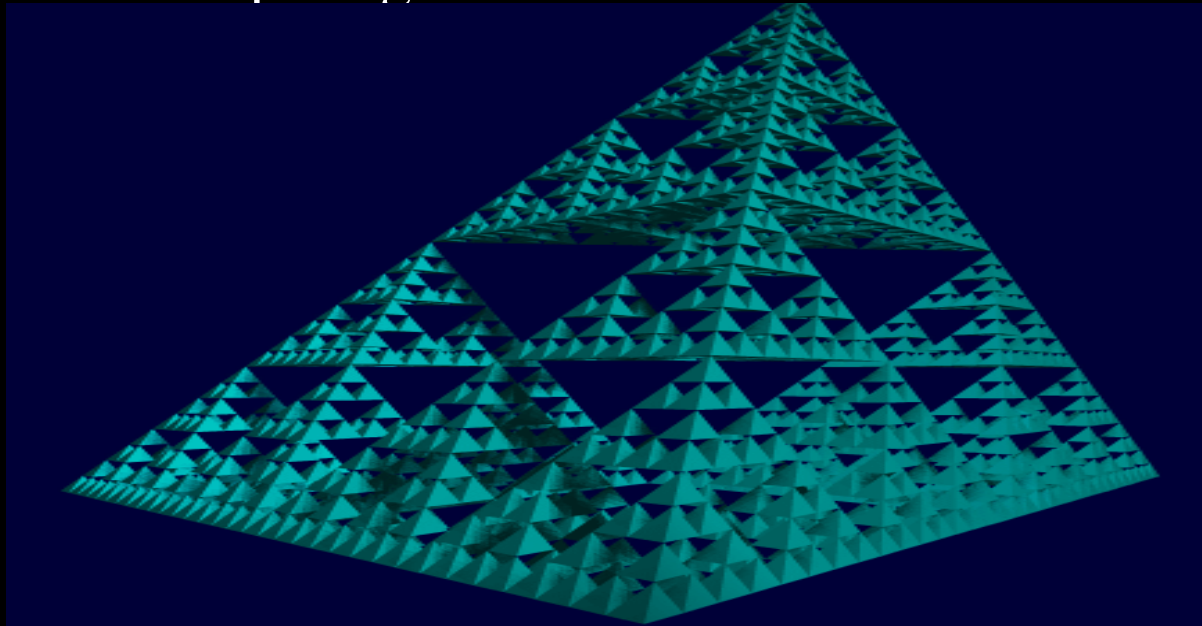
Autonomous Agent Hierarchy - Collective Organism Entity



Human Internet Symbiosis

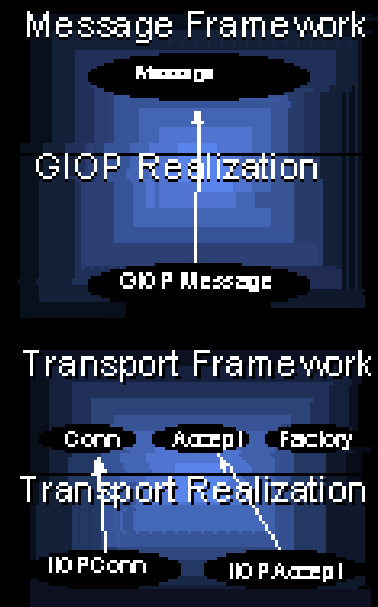
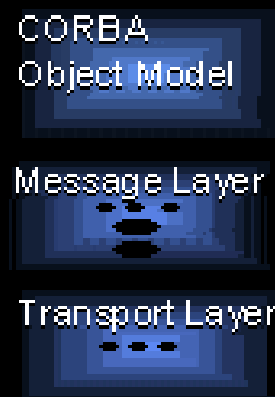
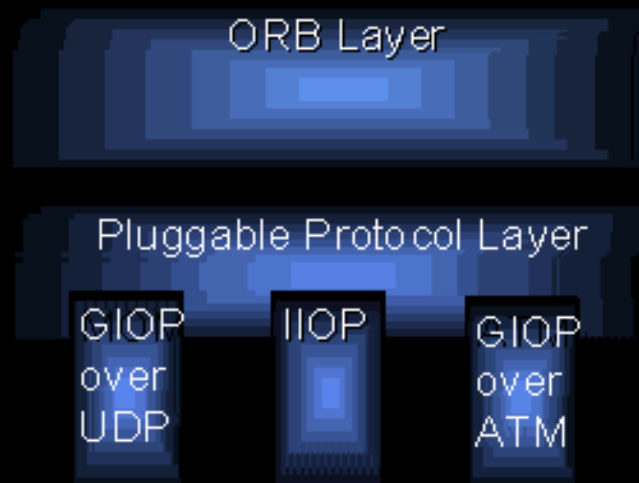
Threshold - Seminal Markers

- Entities on Demand
- Psycho-Ergonomic Interface
- Object Oriented Organelle Nodes
- Biological Metaphors in Computing
- Ubiquitous Computing Fabric Immersion



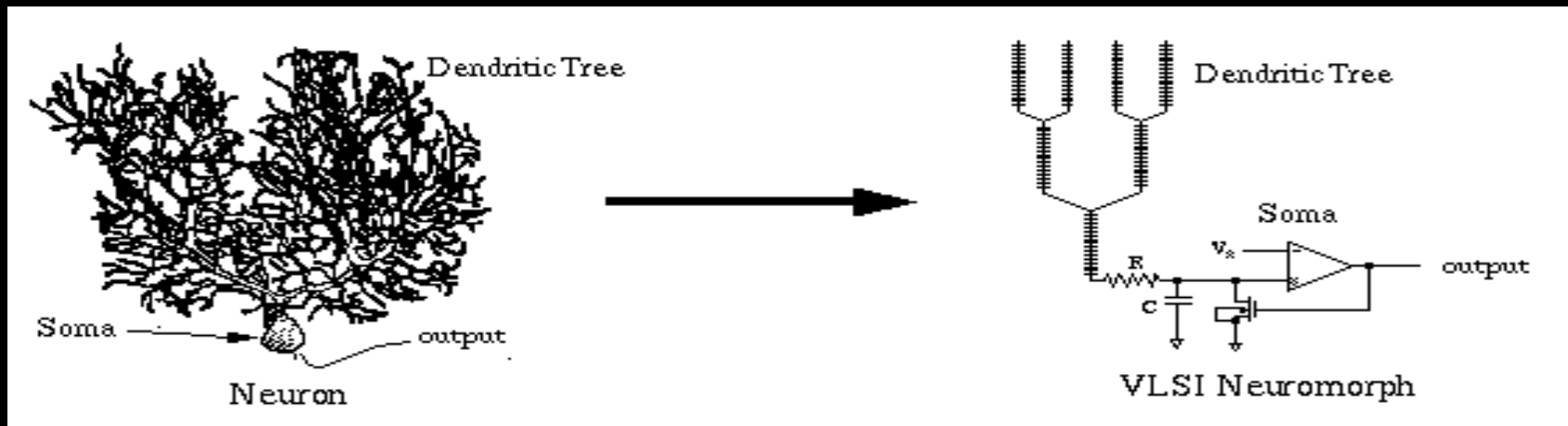
Xenomorphic Organelles of an Emergent Operational Ecology

- ❑ “Soft” Hardware > Gelware
- ❑ Self Evolving System Substrates
- ❑ Contiguously Adaptable System Architecture



Artificial Life / Intelligence

- This is a model of a synthetic neuron



- This is an actual, self evolving synthetic neuralnet

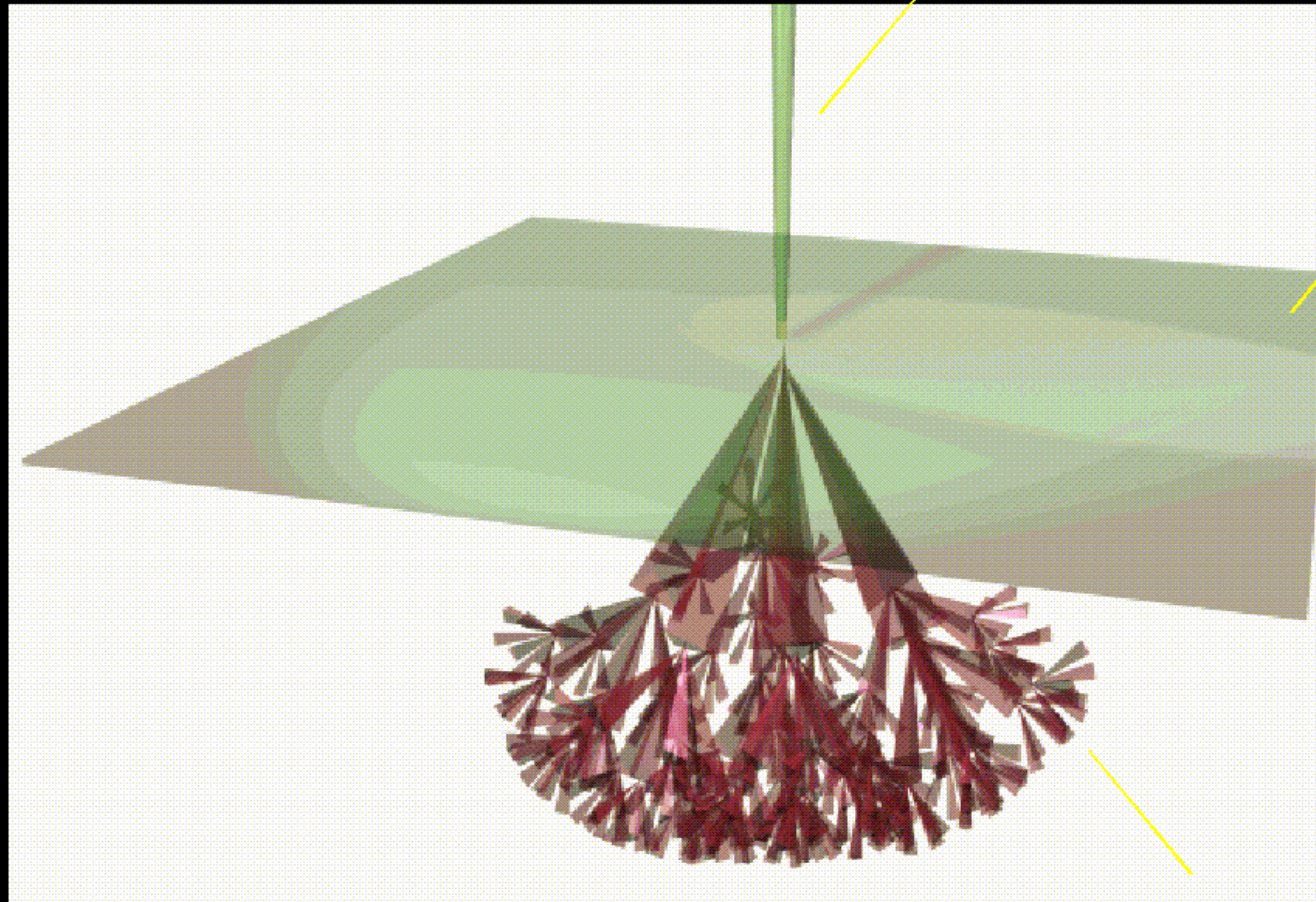


Collective Sentience Process Engine - Operational Xenomorph Process Dynamic

Cognition
Space

Conditionalized
Cognition Vector

Contextual
Cognition
Threshold
Boundary

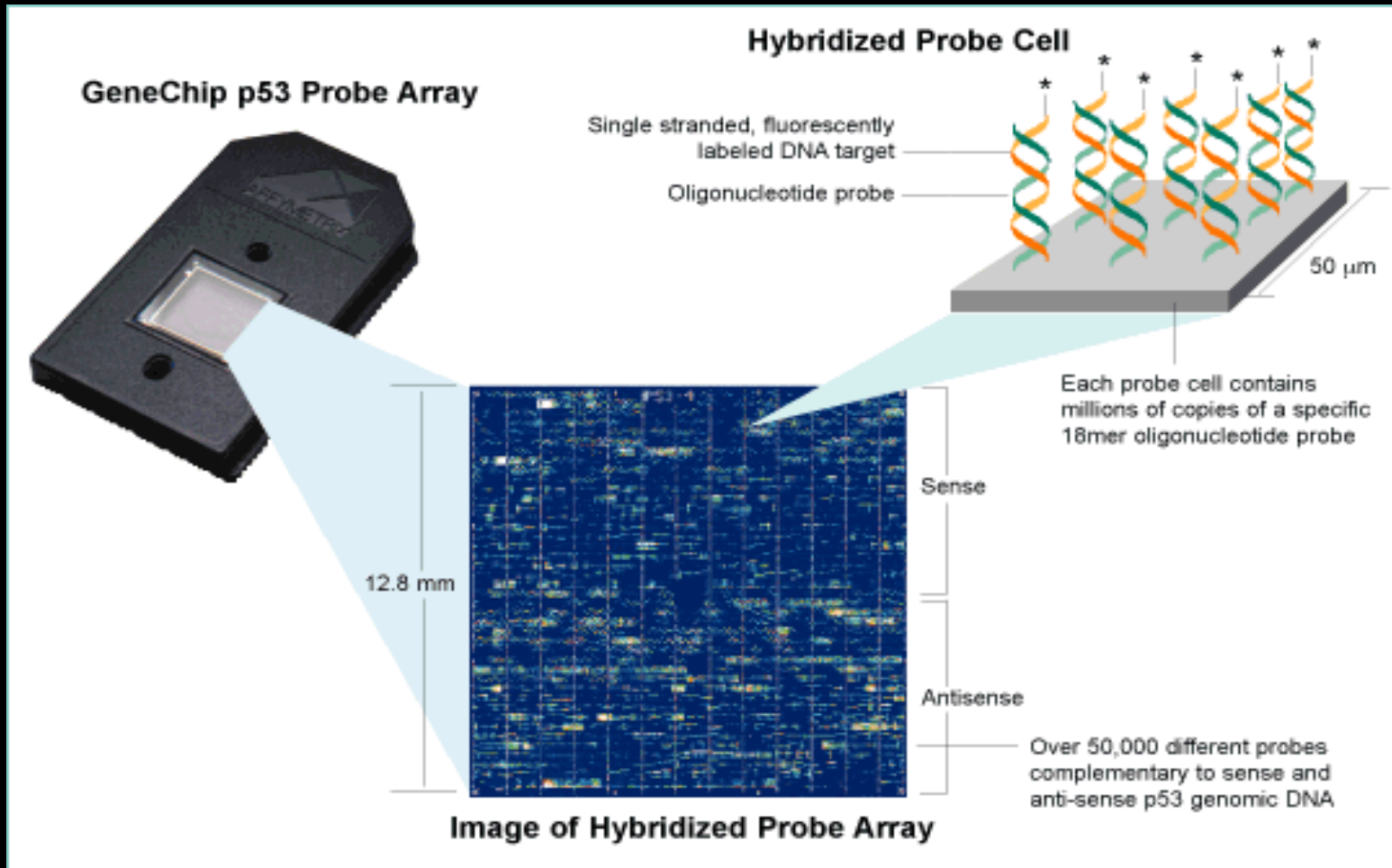


Perception
Space

N-Dimensional
Tiered Process Vectors -
Hierarchical Agent Entities

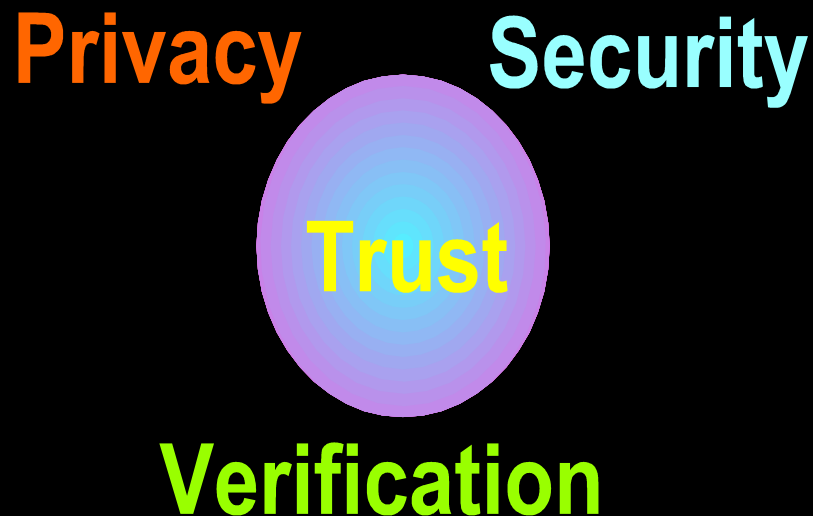
The Bio-engineering Revolution

□ Affymetrix Genechip Example

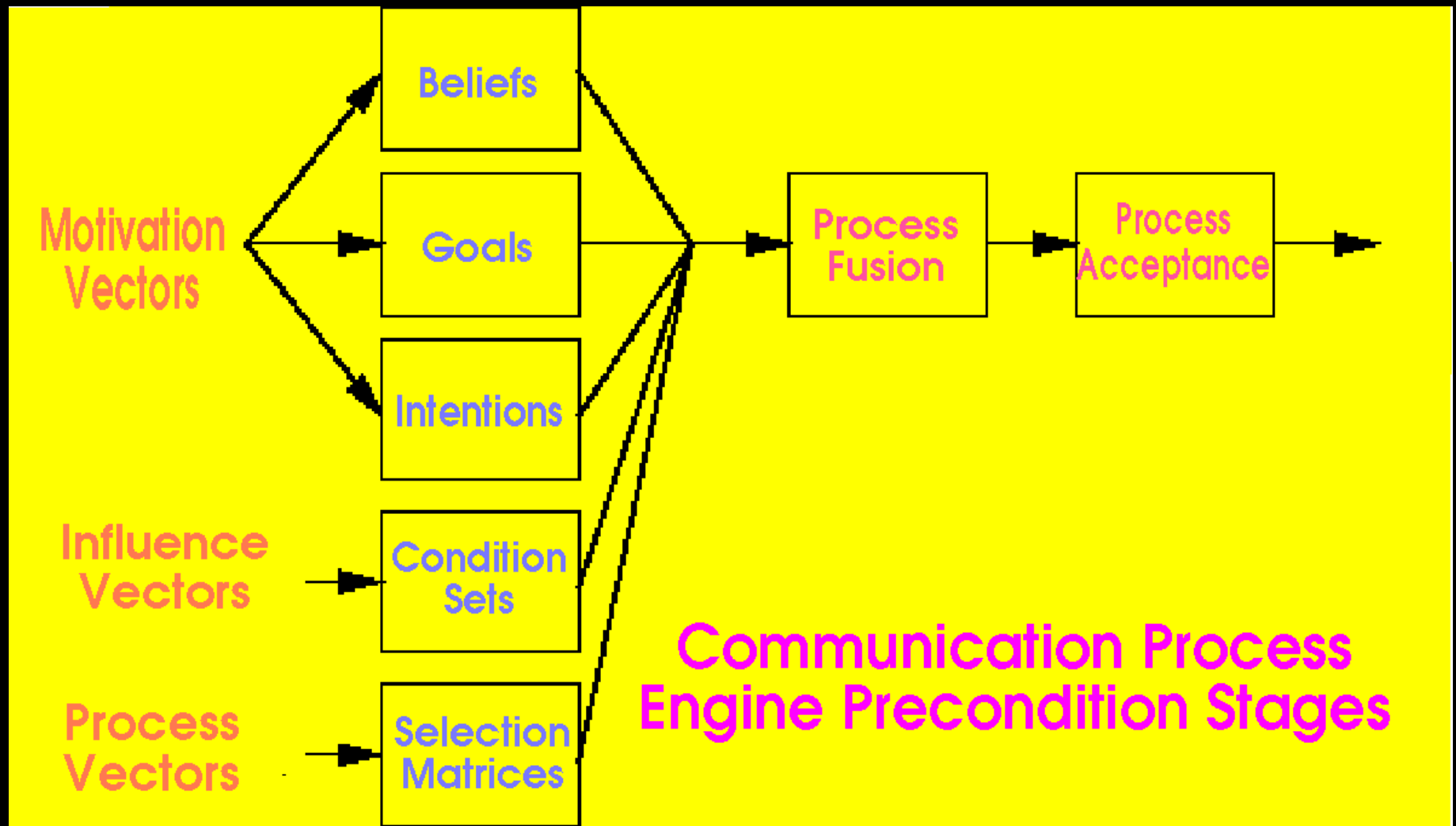


Cultural Imperatives

- Embedded Intelligences
- Integrated Lifestyle Management
- Ubiquitous Interactive Process Environment



Artificially Enhanced Complexity Management - Process Control



Convergence Outcome - Life is Redefined

- Biological Metaphors in Computing
- Immersion into the Ubiquitous Fabric
- Bioengineering - Life Itself Redefined

