

# Approaching the Next Evolutionary Eventhorizon:

At the Intersection of Focused Intentionality,  
Collective Consciousness, and the “Convergence  
Syndrome” shaping our potential Future History

Charles Ostman

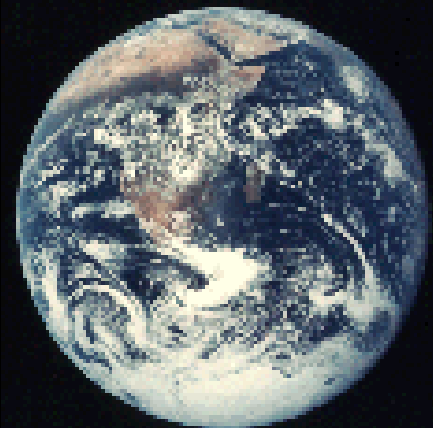
Senior Fellow - Institute for Global Futures

Chair, NanoElectronics & Photonics Forum

Senior Consultant – Strategic Synergy Group

tel 510 549 0129 email [charles000@aol.com](mailto:charles000@aol.com)

<http://www.technofutures.com/charles1.htm>



# The Big Picture – Approaching the Evolutionary EventHorizon



Synthetically Enhanced Evolution

Intelligent Materials - Nanotechnology

Artificial Life and Intelligences

Self Evolving - Self Modifying Systems

Ubiquitous Transactional Environments

Biophysical Evolution Transitioning Toward Quantum Evolution

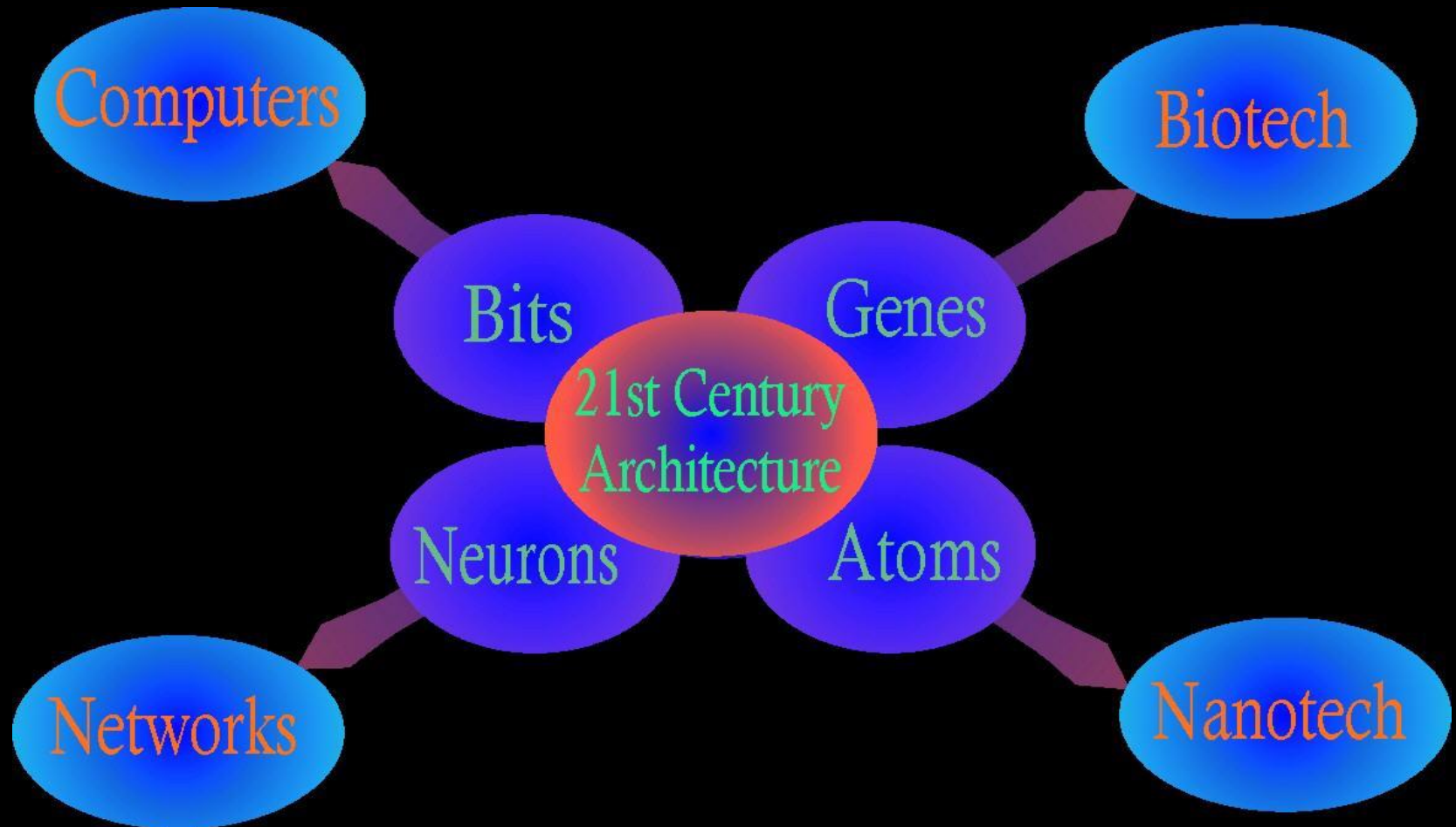
# Major Evolutionary Eventstream

## Process Dynamics and Drivers

---

- Dissolution of *organic / synthetic domain boundaries*
- Realtime interconnected *operational ecologies*
- Epicenters of value indexed by *virtual commodity assets*
- Emergent *sovereign knowledge domains*
- Spawning of *biological metaphors in computing, networks, processes*
- Irreversible *human / internet symbiosis threshold*
- Hybrid forms of consciousness – *access to the “quantum foam”*

# “Traditional” 4D Future Map of the 21<sup>st</sup> Century Architecture





# “Potential” ND Future Map of the 21<sup>st</sup> Century Architecture

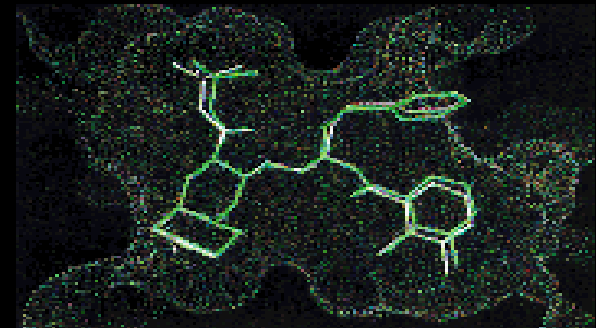
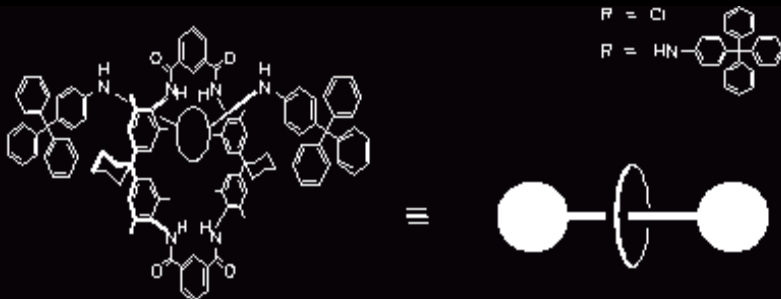


**Access to the “empathic web” infrastructure –  
Integration of focused intentionality, technical  
amplification, and spiritual maturity**

# Potential Convergence Syndrome Outcome: *evolution of the “empathic web”*



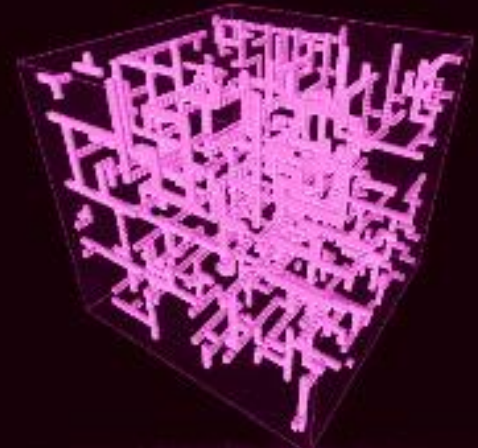
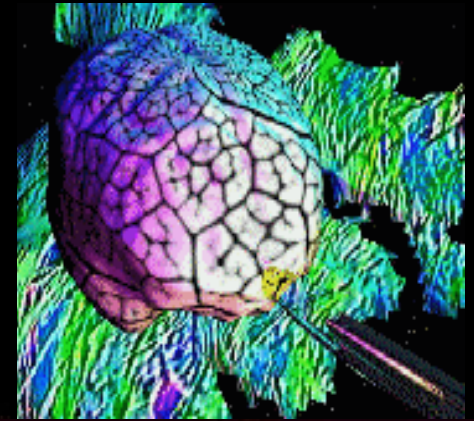
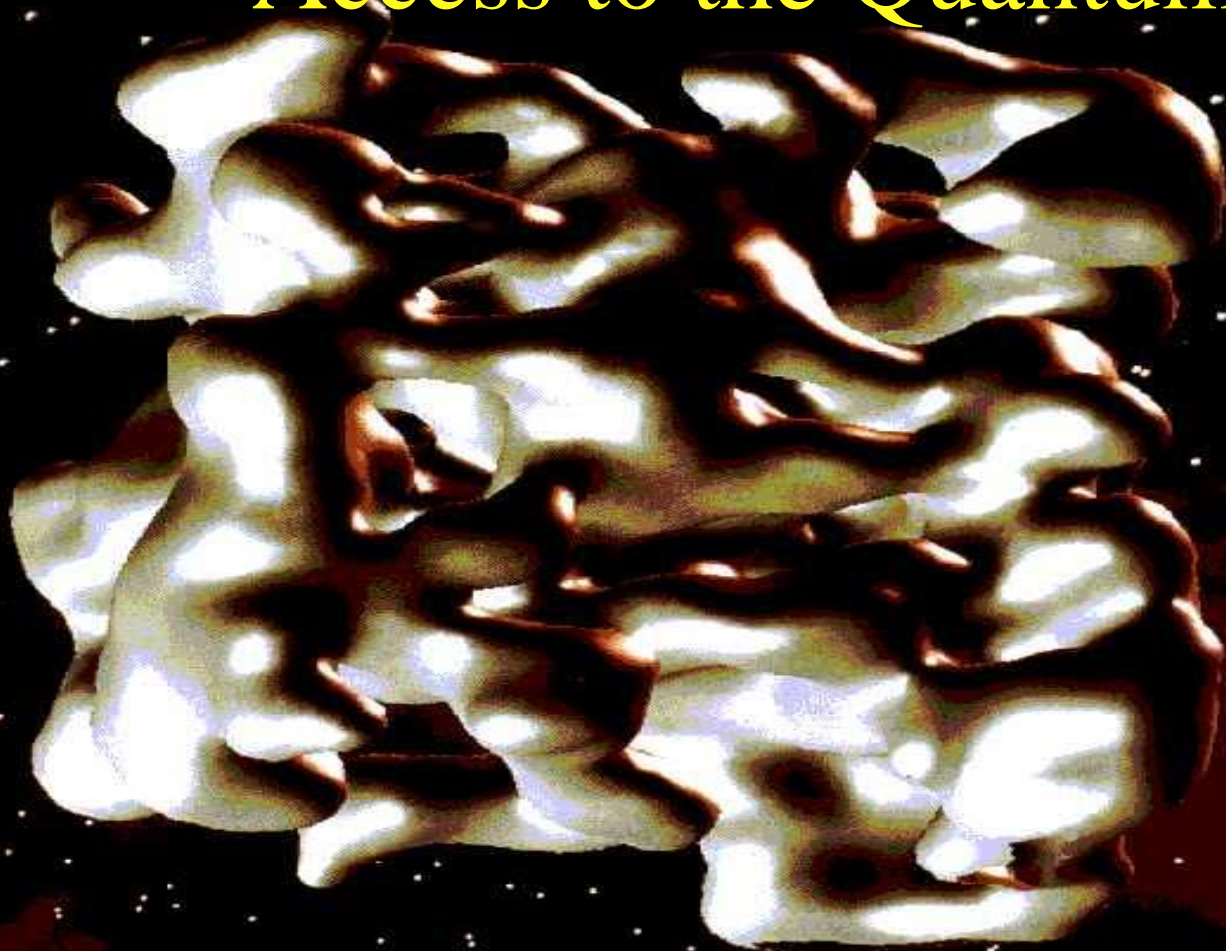
- ❑ The next potential evolutionary increment may be the acceleration toward hybrid forms of consciousness.
- ❑ Focussed intentionality amplified and tuned as an instrument of influence for “spawning” the history of our future.



# The Next Evolutionary Eventhorizon

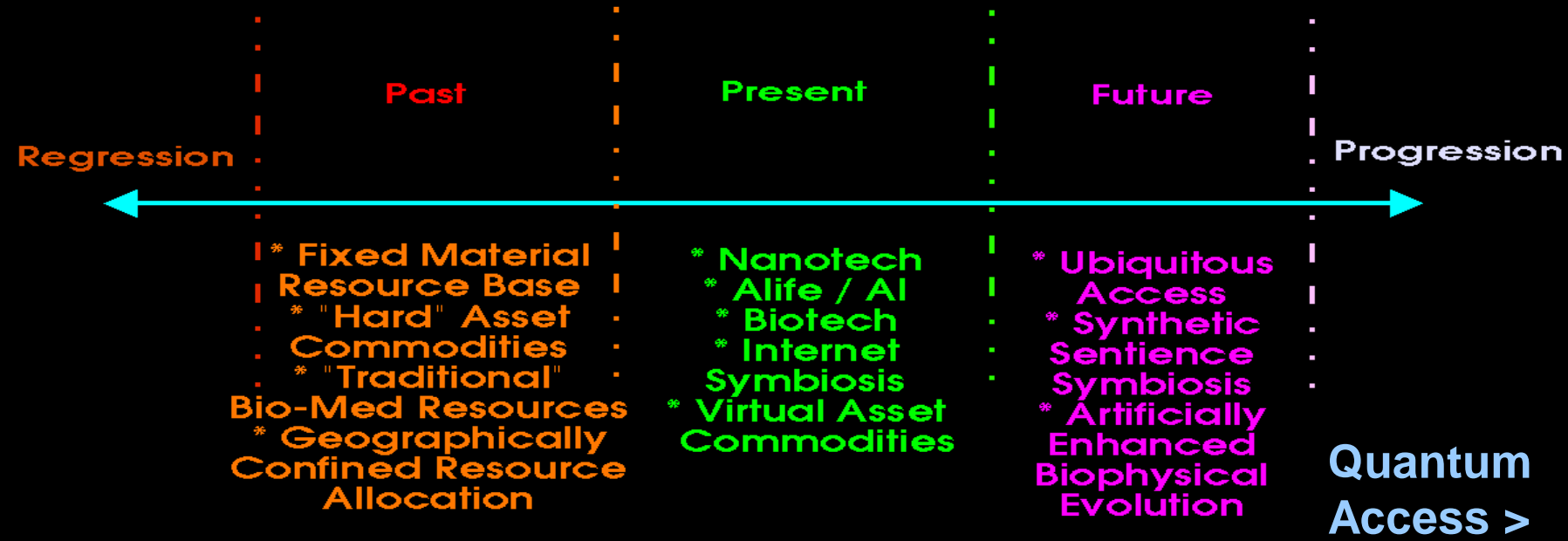
## Hybrid Forms of Consciousness -

### Access to the Quantum Foam

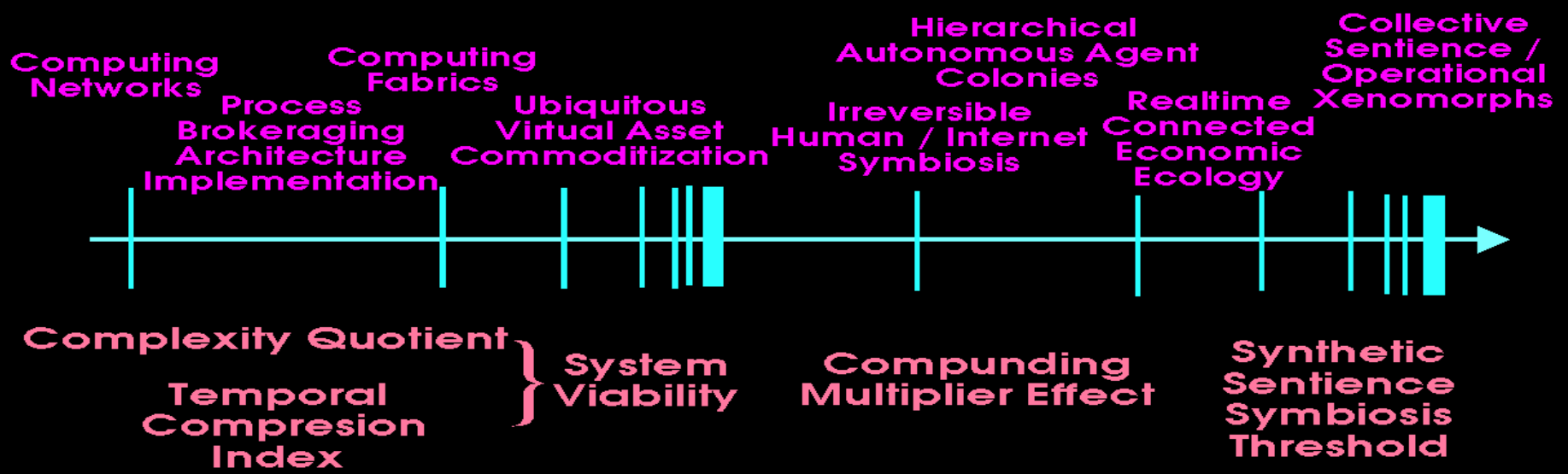




# Technology Driven Socio-Anthropological Evolutionary Threshold Domains



## Evolutionary Eventstream Seminal Markers





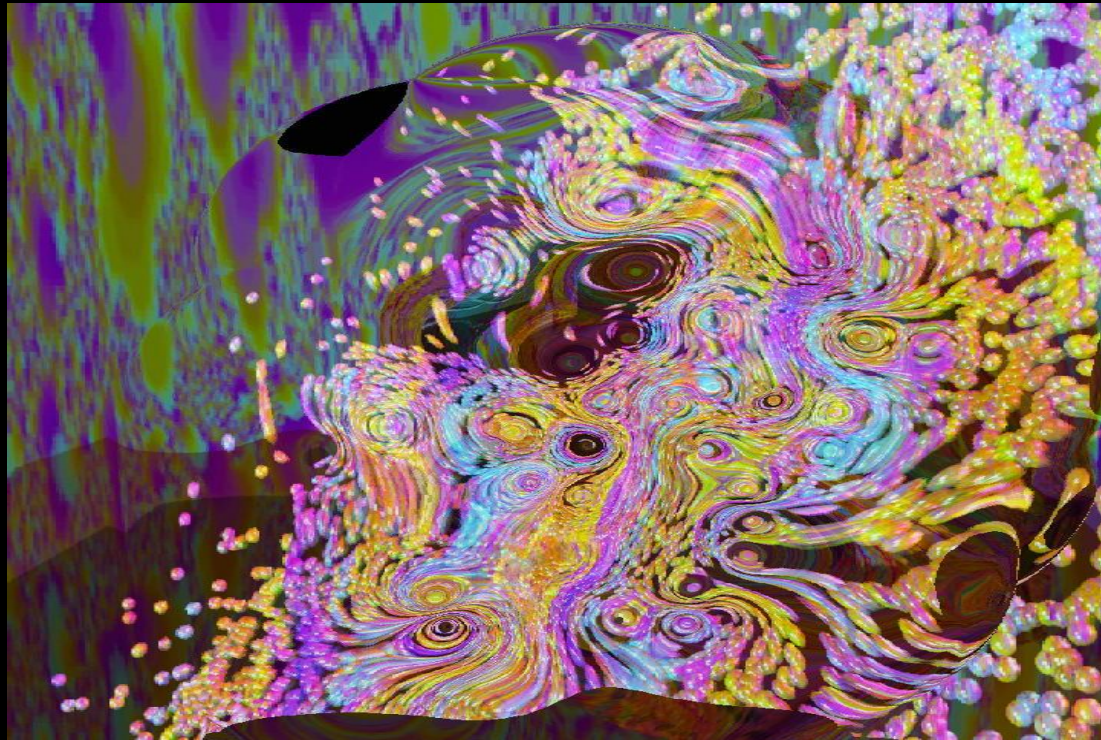
# We are Biophysical Manifestations of Entities Dwelling within the Ubiquitous “Quantum Jello” Manifold –

- ❑ All Living Things are Interconnected into an Operational Ecology
- ❑ This Planet as a “Living System” is Interconnected into a Cosmological Ecology



# Think Different – Think *Holographic*

- ❑ Transition from localized to non-localized cognition
- ❑ System level morphology as the objective
- ❑ Physical and spiritual synchronicity



# Ubiquitous Cultural Constants

- All living things are “interconnected”
- Life extends beyond the physical form
- The planet itself as a “lifeform”

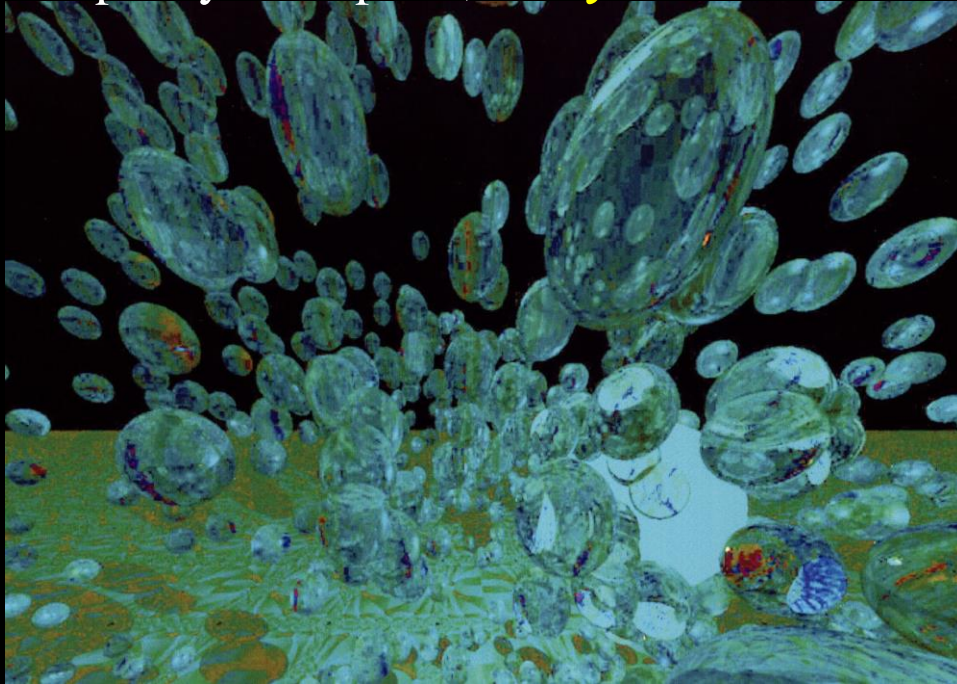




# Evolutionary Process Dynamics

“I believe that fractals respond to a profound uneasiness in man” - *Benoit Mandelbrot*

- ❑ Evolution tends to be a trauma induced process
- ❑ Fractal system model - operates at all scales, from the individual, to the collective, entire systems
- ❑ Provided the periodicity and amplitude of trauma cycles do not exceed the system capacity to respond, *the system tends to evolve to a more robust form*



"We never stop investigating. We are never satisfied that we know enough to get by. Every question we answer leads on to another question. This has become the greatest survival trick of our species."

--

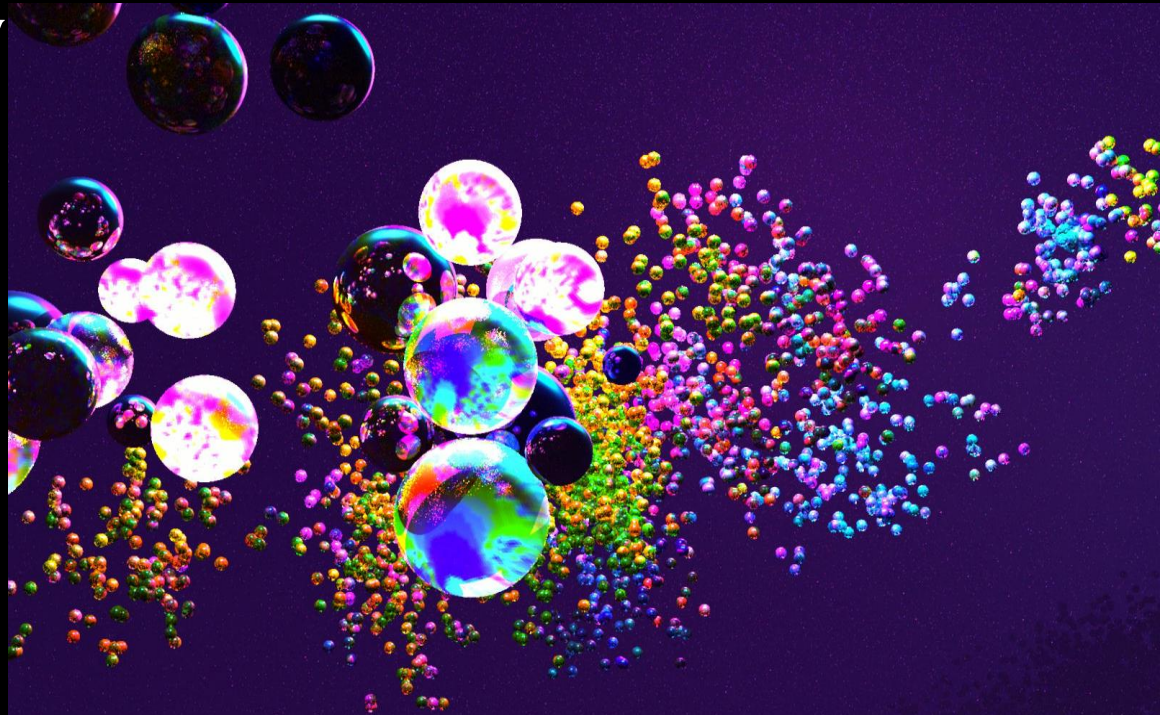
*Desmond Morris*



# The Holographic Perspective

- Focused intentionality as a mechanism of influence
- All living things are systematically interconnected
- Definition of “living things” extends to systems, processes, entities which behave biologically

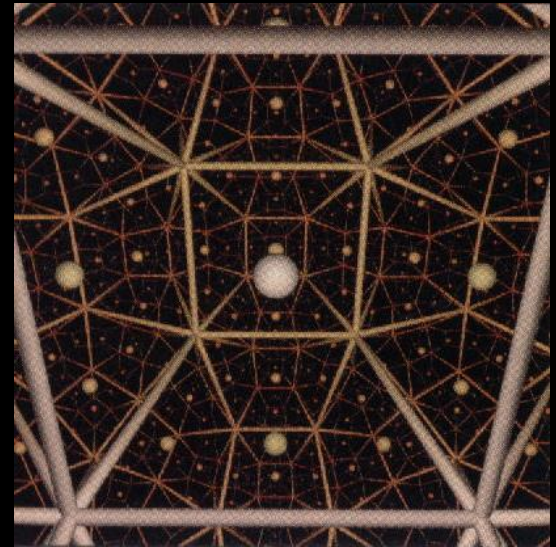
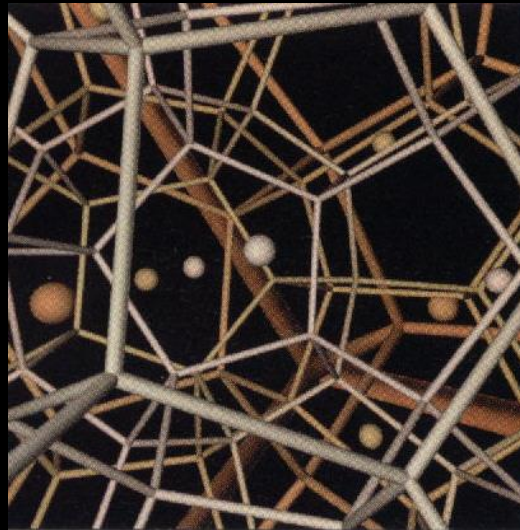
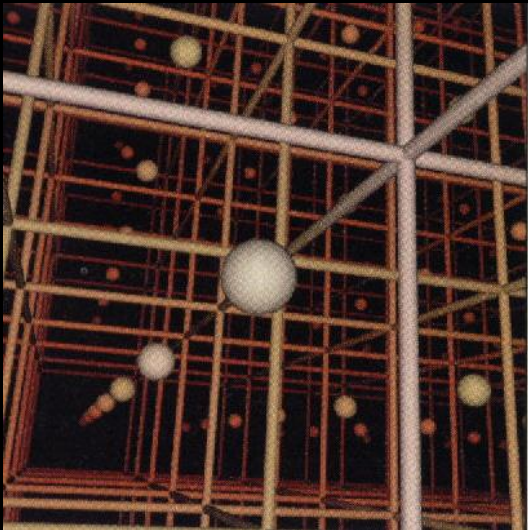
“And the day came when the risk it took to remain tight in the bud was more painful than the risk it took to blossom.” ~Anais Nin~



# The next Evolutionary Increment . . .

## Hyperdimensional Access

- Transition from 4D spatio-temporal cognition to n-dimensional quantum cognition



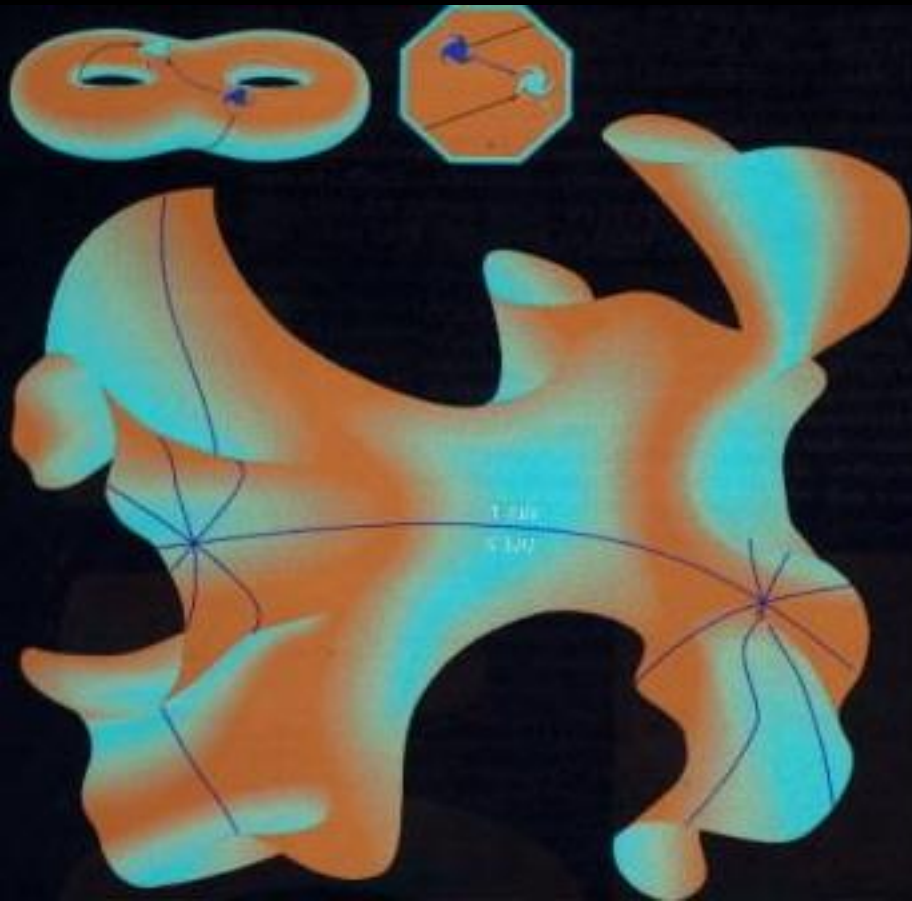


# The emergent Evolutionary Increment . . .

## Hyperdimensional Awareness



# Hyperdimensional Doughnut Model of the Universe



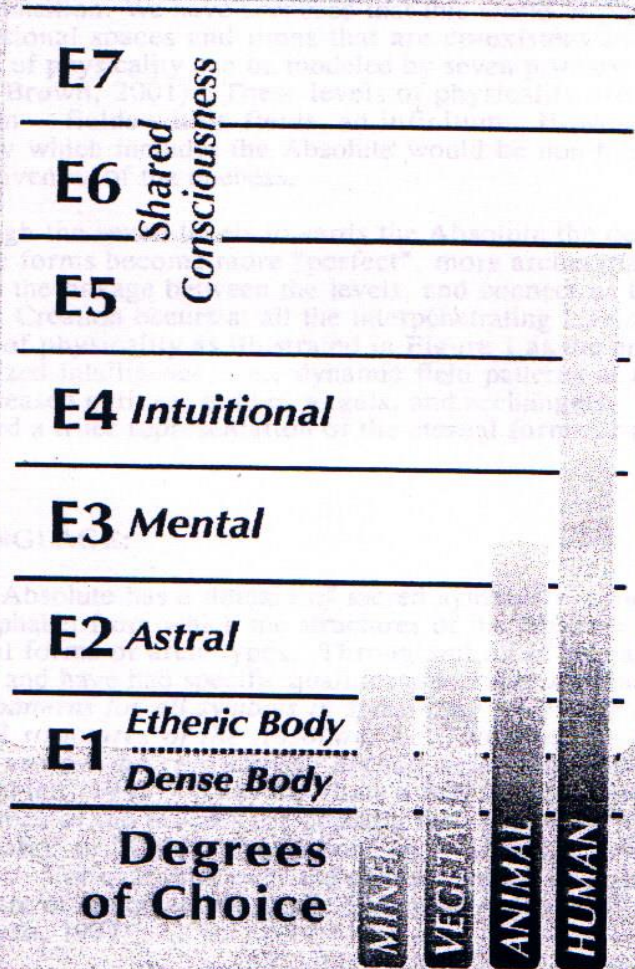
Torroidal model of the universe – “doughnut” spatial geometry of the universe, as is currently one the major prevailing theoretical models of time / space continuum – represented here as an infinite octagonal grid structure configured into a dual torroidal domain. Though not “possible” in 3D space, it can become manifest as a hyperbolic manifold. Jean-Pierre Luminet, Glenn Starkman, Jeffery Weeks – Scientific American



# The Absolute

SPIRIT. . . UNMANIFEST FORMS. . . TAO. . . FIELD OF IDEALS. . .

EMERGENT FORMS



RETURN TO ABSOLUTE

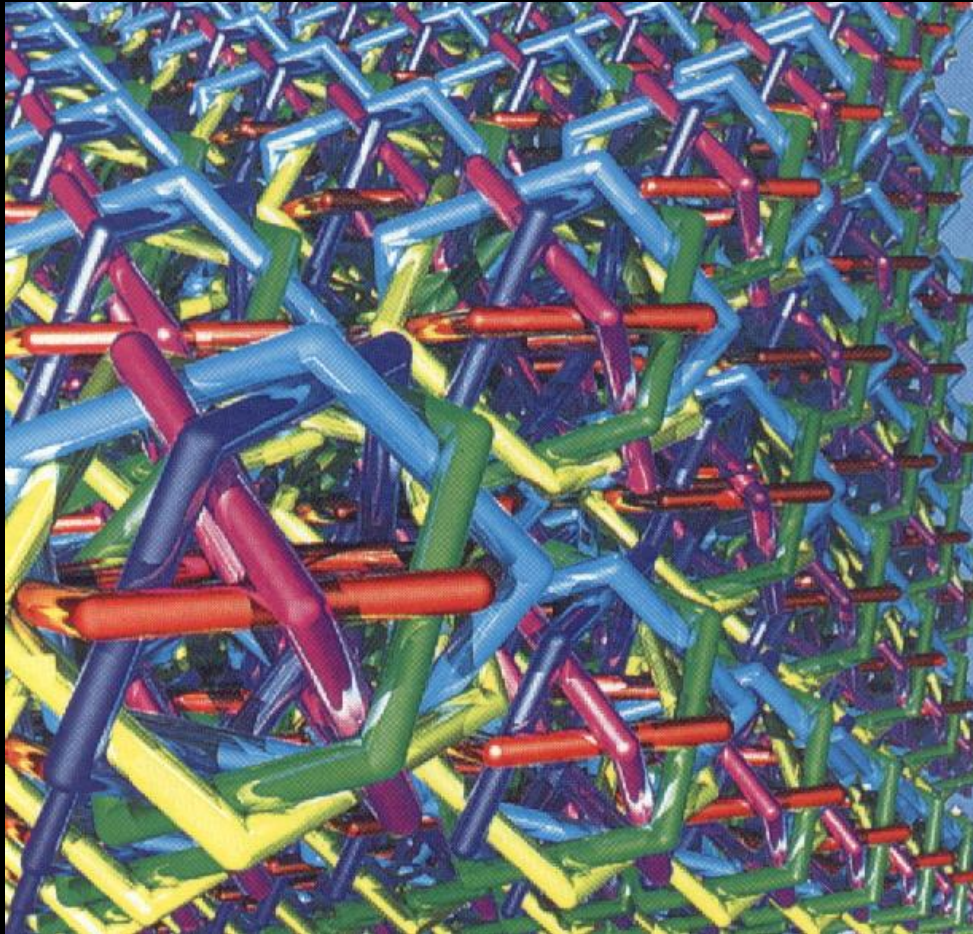
Physicality. . . Space/Time

Excerpted from:  
“Domain of Unbounded  
Potential – The Science  
of the Absolute”

William Gough  
Dean Brown



# Michio Kaku Civilization Hierarchy



Type 0 fixed localized resources

Type 1 renewable planetary resources

Type 2 invulnerable to planetary phenomena

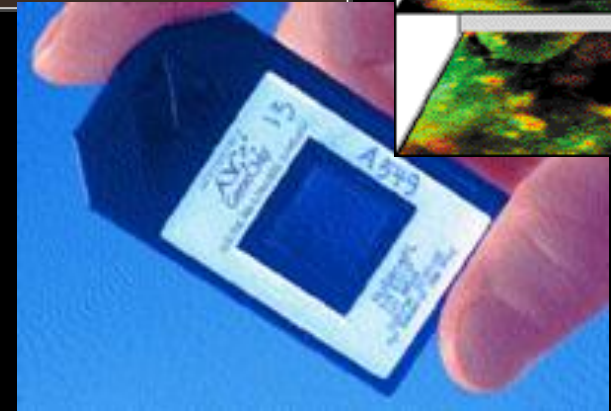
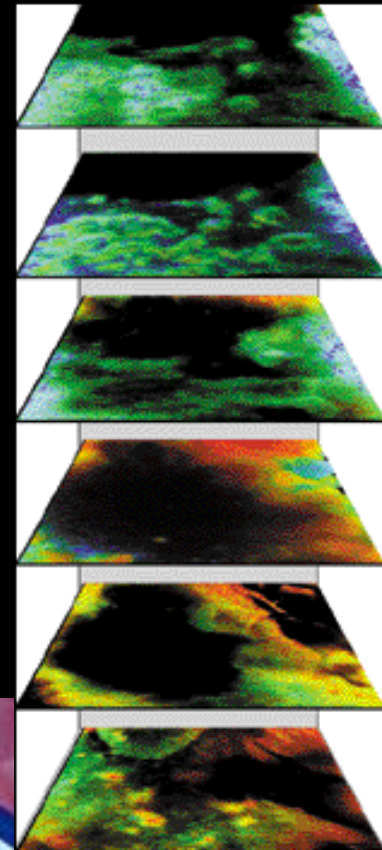
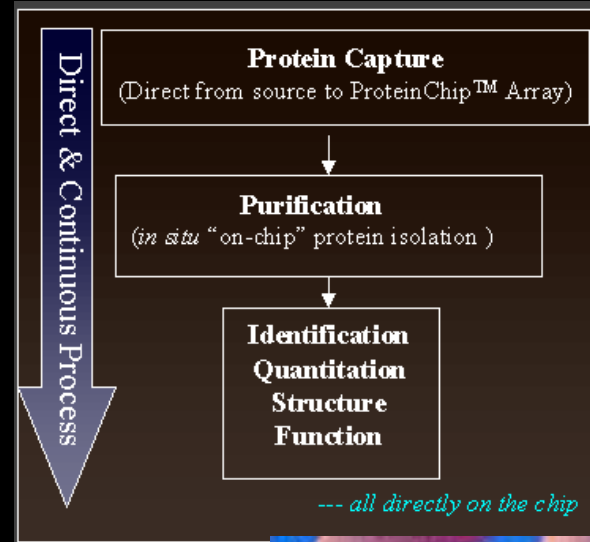
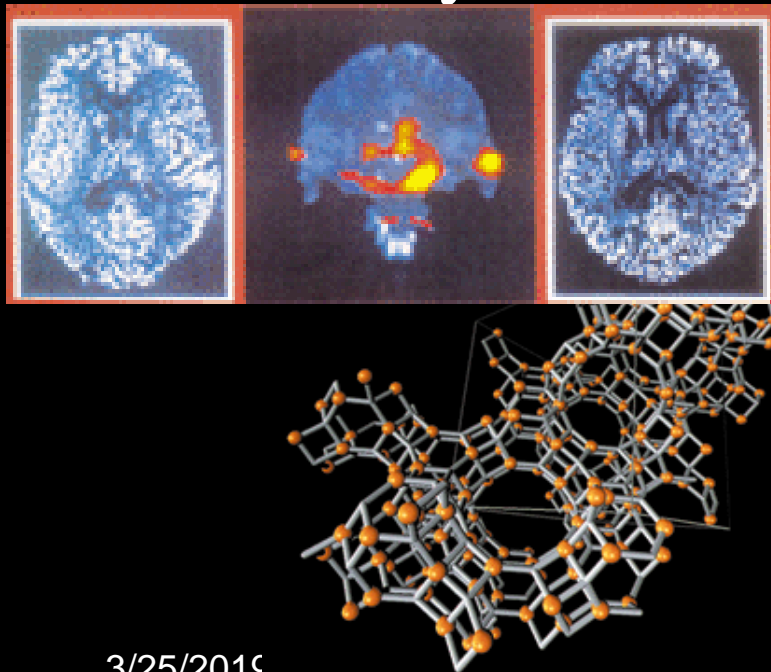
3 interstellar travel

Type 4 wormholes – transdimensional access to multiple universes

Type

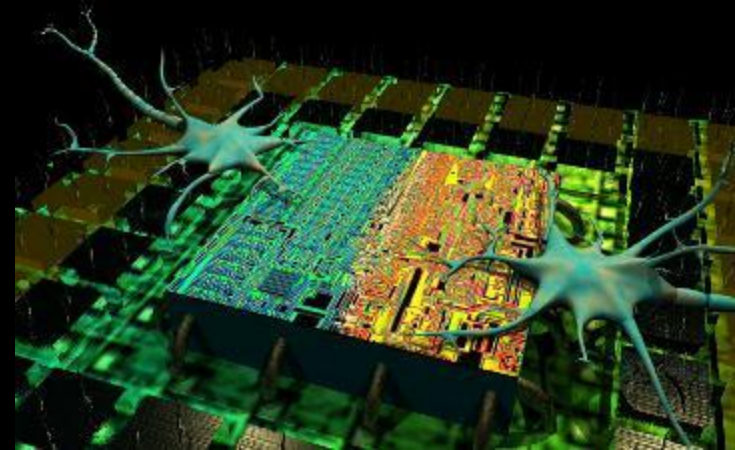
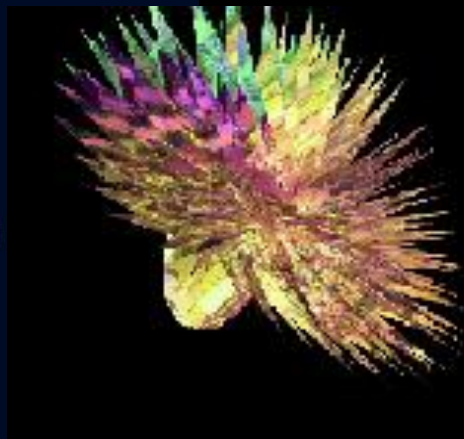
# Merging of the real and virtual, biological and synthetic, into an existence continuum

- Technology Convergence
- Cultural Drivers
- Belief Systems



# Cultural Imperatives of the Evolutionary Eventstream - Emergent

- Knowledge complexity, scale, and velocity is exceeding human capacity for mission critical decision rendering compressed into ever shortening time scales.
- Evolution of complex metasystems of artificial entities, synthetic lifeforms, and emergent intelligences becomes the acceptable “culture norm” of the near future.
- Perceived boundaries of the “synthetic” and organic, the “virtual” and the real, become enmeshed into an existence continuum.





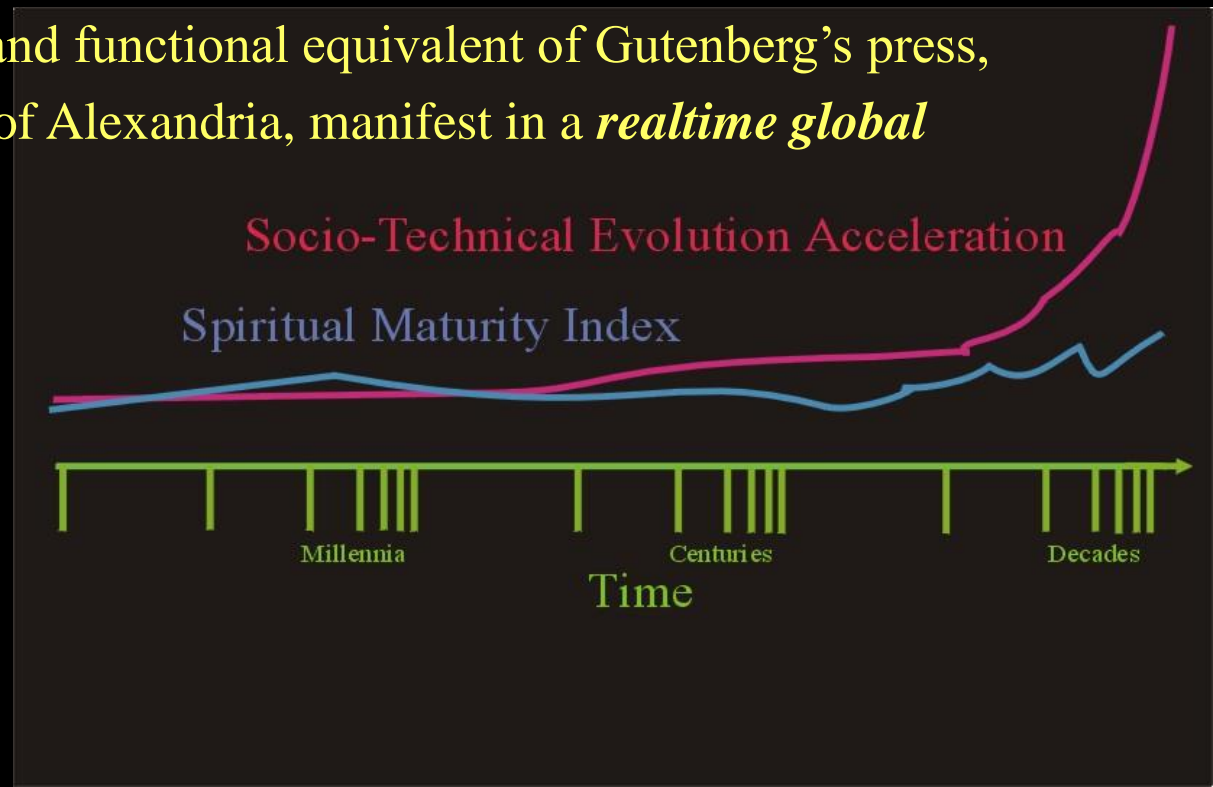
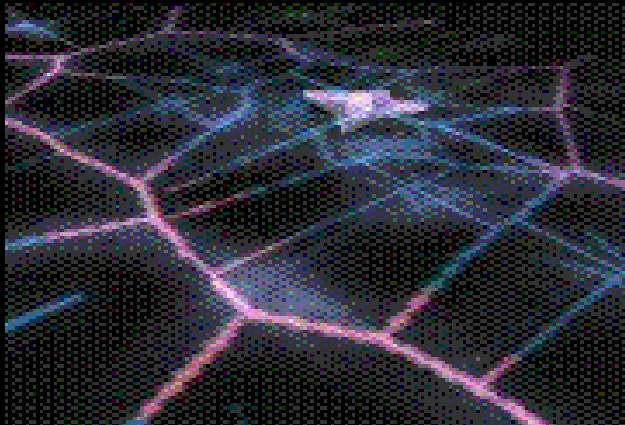
# Contextual Cognition in the Emergent Operational Ecology > Hyperdimensional Existence Navigation



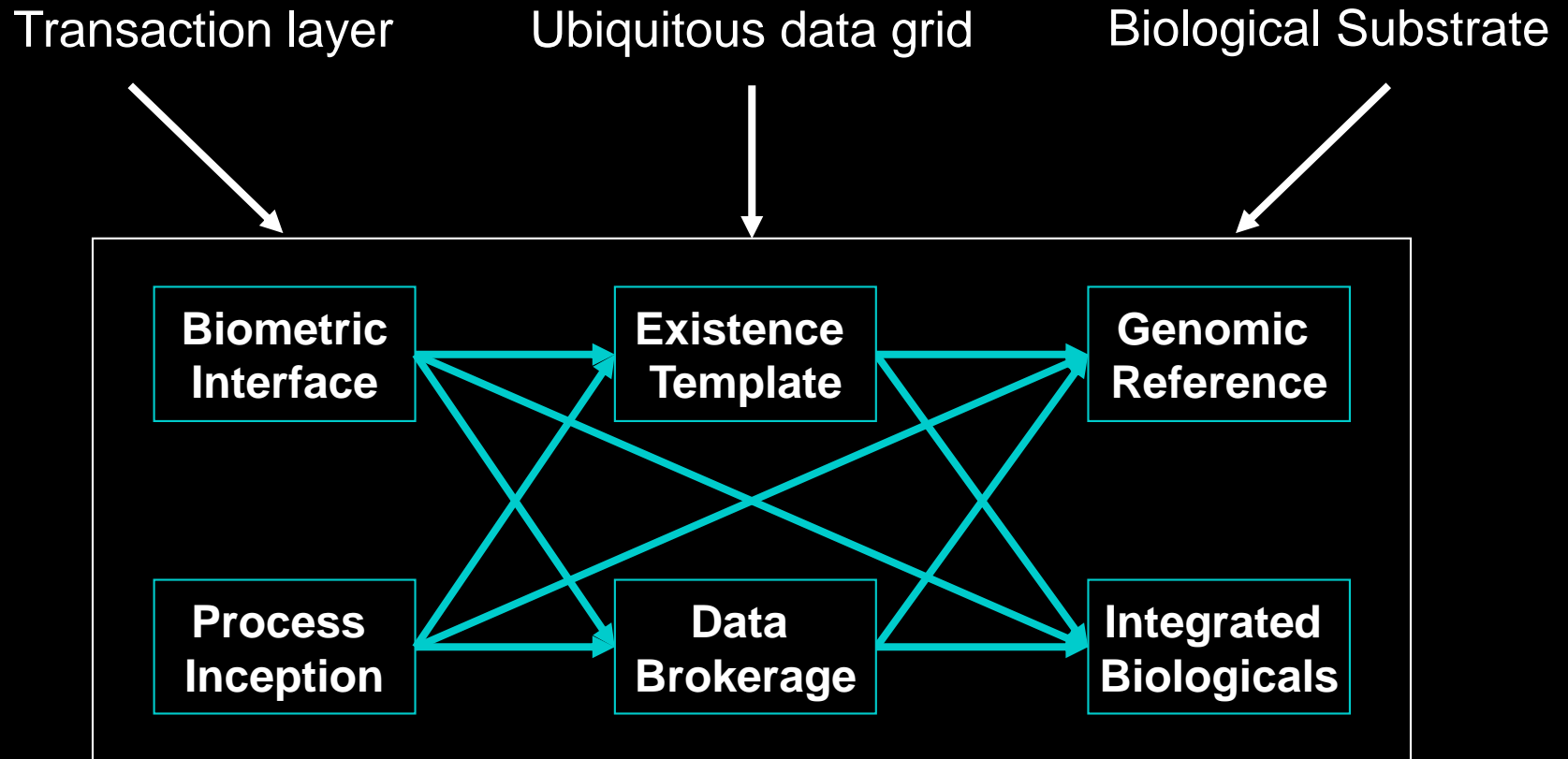
# Existence Integration

- Biometric Interface
- Cognition Platforms
- Realtime Connectivity

The internet is the cultural and functional equivalent of Gutenberg's press, combined with the Library of Alexandria, manifest in a *realtime global environment*



# The “Commoditization” of Existence - Existence Valuation System Architecture







**Complexity  
Acceleration**

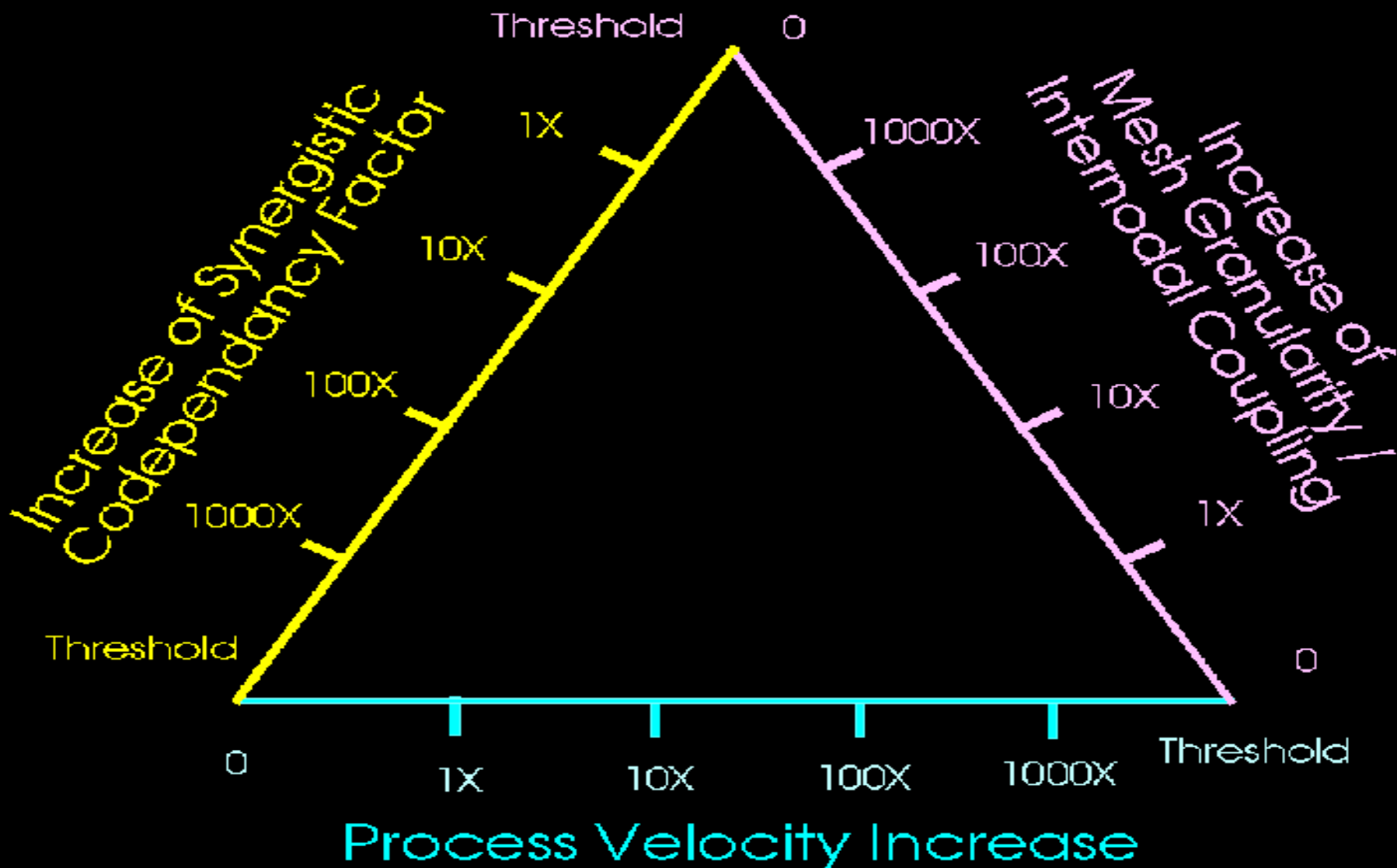
**Process Elements  
of the Convergence  
Syndrome**

**Time  
Compression**

**Connectivity  
Increase**



# Convergence Syndrome Triad



# Biological System Process Modalities - Evolution of the Human / Internet Symbiosis

---

Ubiquitous  
Biometric Interface

Self Evolving  
Knowledge Domains

Behavioral  
Template Mapping

Content Definable  
Functionality Mapping

Self Organizing  
Networks

Content Addressable  
Information Mapping

# Process Elements of the Emergent Human / Internet Symbiosis



## Internet as an Organism Threshold

Biological Metaphors in Computing  
Self Organizing Routing Structures  
Defensive Networks  
Synthetic Sentience

Intelligent Agent Entities  
Multi-Agent Colonies / Hierarchies  
Self Organizing Knowledge Ontologies

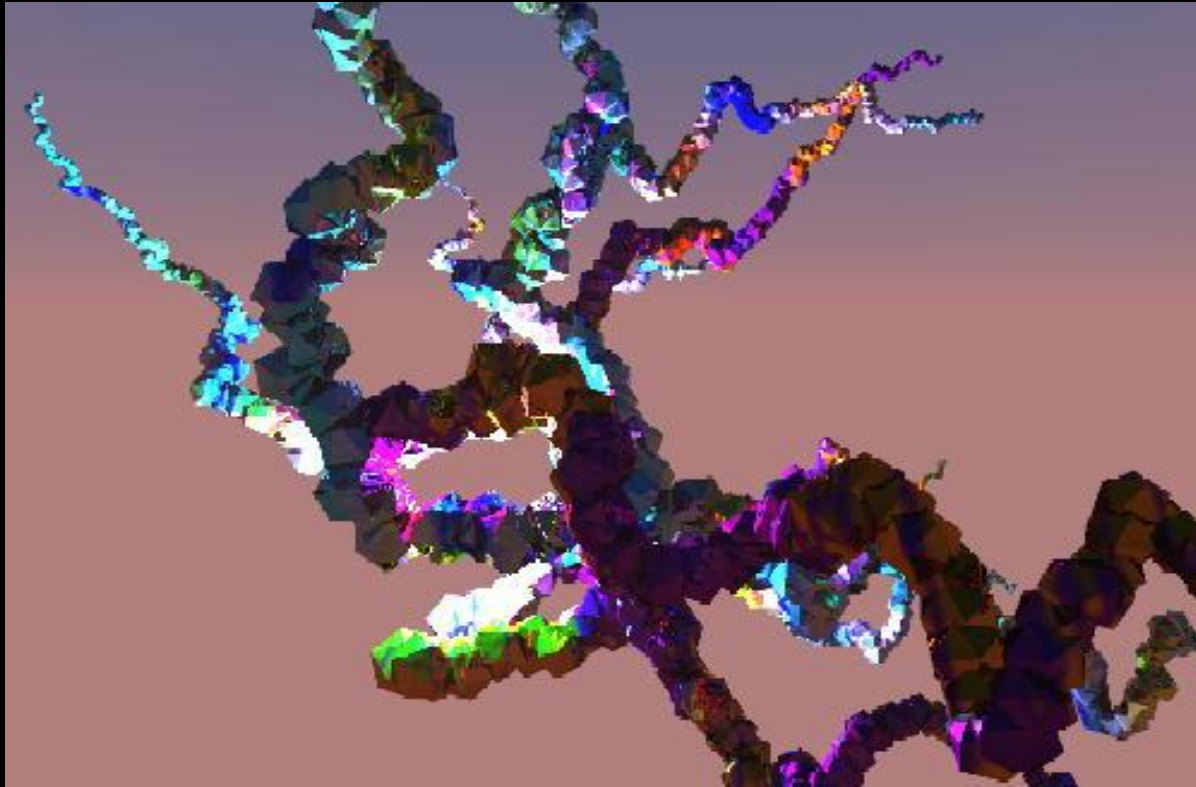
Distributed Artificial Lifeforms  
Collective Symbiotic Intelligence  
Evolutionary / Genetic Computation

Realtime Tele-Existence Streaming  
Pyshco-ergonomic Interface  
Biometric Transparency



# The Operational Ecology – Nano Bio Info Cogno

- ❑ Self evolving information architectures, process platforms, knowledge ontologies
- ❑ Self assembling / self organizing molecular systems, biological and non-biological



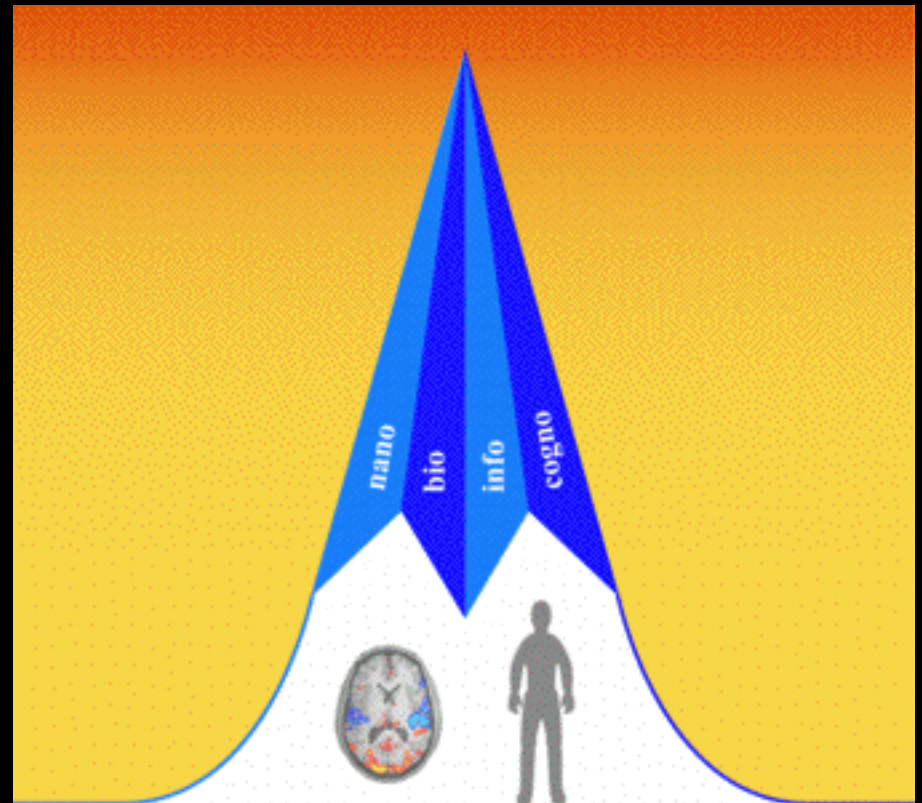
# The Emergent Infotech / Biotech / Nanotech / Cognotech Operational Ecology

## NBIC Conference

Converging Technologies  
for Improving Human  
Performance:

Nanotechnology,  
Biotechnology, Information  
Technology and Cognitive  
Science

NSF/DOC-sponsored report  
<http://www.wtec.org/ConvergingTechnologies>

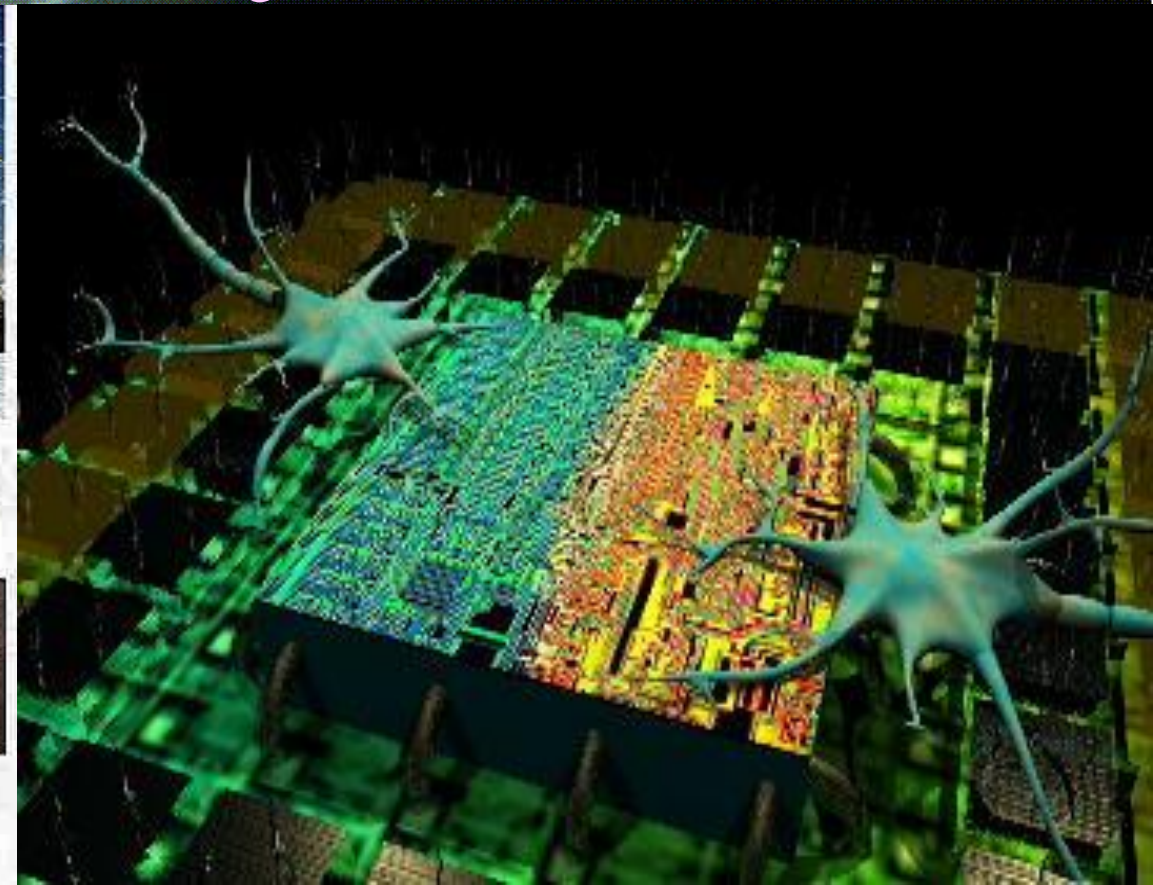
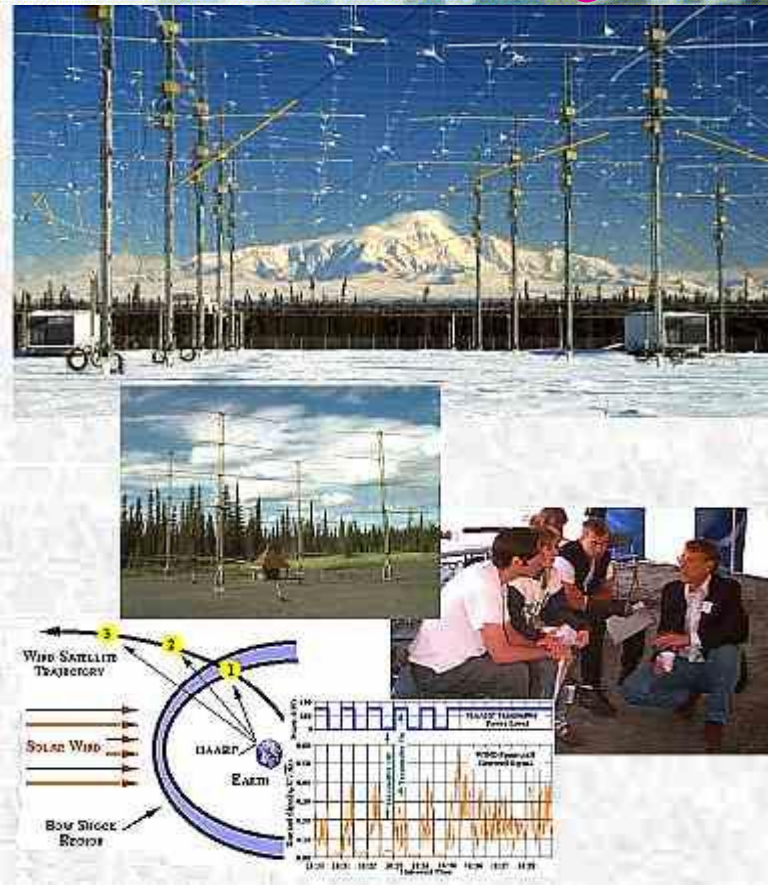




# The collective planetary gaia organism - at the next evolutionary challenge threshold

High Frequency Active  
Auroral Research Program

Integrated biodevices / hybrid  
organisms / artificial entities



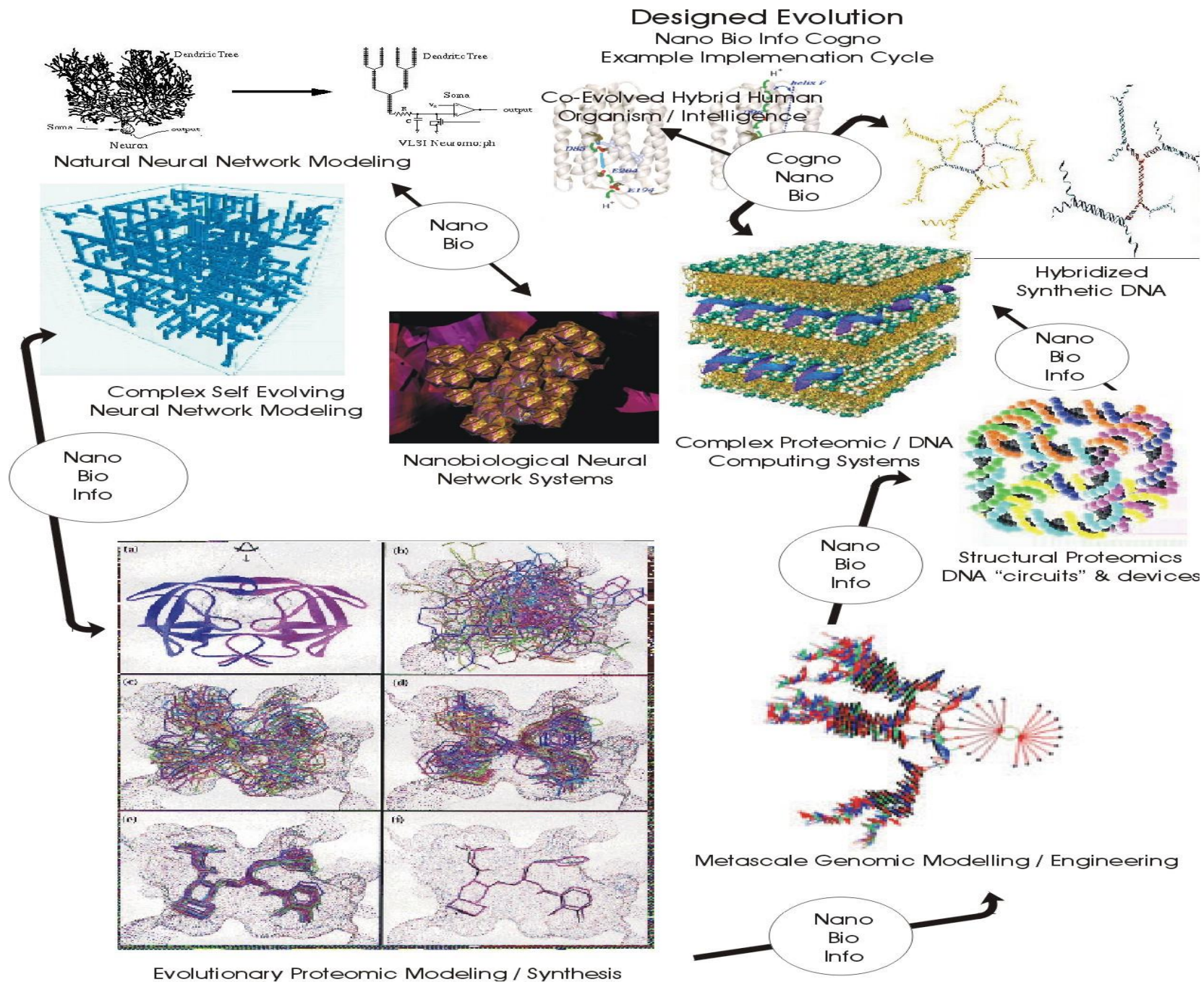


# Processes dynamics of evolutionary system failure vs. “Armageddon” trauma singularity

**Evolutionary system failure is the exact inverse of an Armageddon meteor impact event**

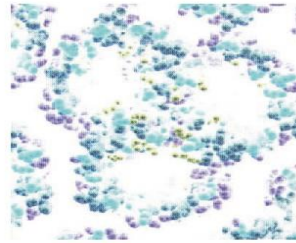
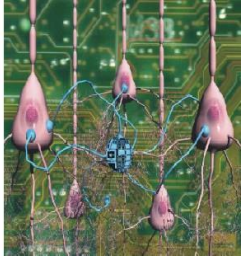


- Problem space to solution space interface boundary is highly perturbed
- Many to many problem space driver - perceived threat vectors are contextually interlinked, nonlinear interdependancies

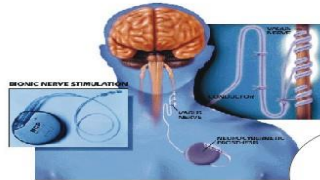




Co-Evolution with Emergent Intelligences  
 Genetic / Biophysical Enhancement  
 Accelerated Environmental Adaptation  
 Extended Longevity & Functionality



Biocompatible Molecular  
 Surfaces / Interface

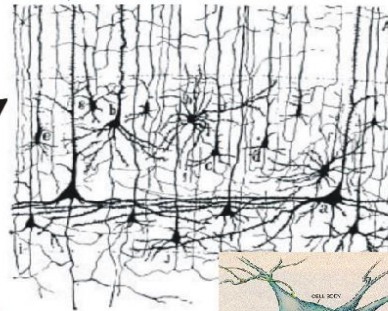


Biodevice / Implant  
 System Interface

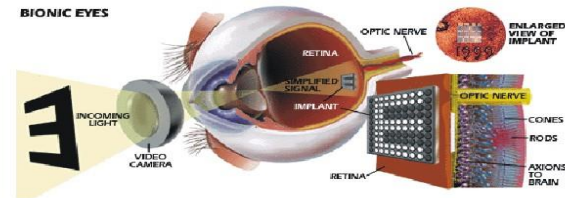


Nano  
 Bio

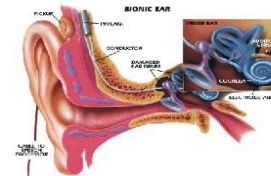
Nano  
 Info  
 Bio



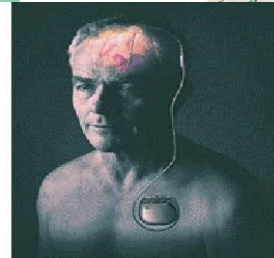
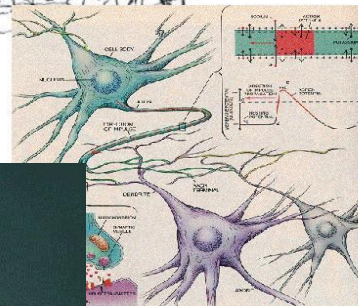
Neural  
 Mapping



Complex Integrated Biodevice /  
 Functional Restoration



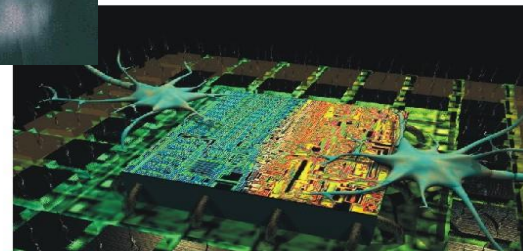
Nano  
 Cognito  
 Bio



Cogno  
 Nano  
 Bio



Cellular / Neural Repair



Cellular / Neural Interface

Extended Sensory Capacity  
 Intellectual / Cognitive Capacity  
 Strength, Endurance Attributes  
 Extended Longevity



# Global Consciousness Project

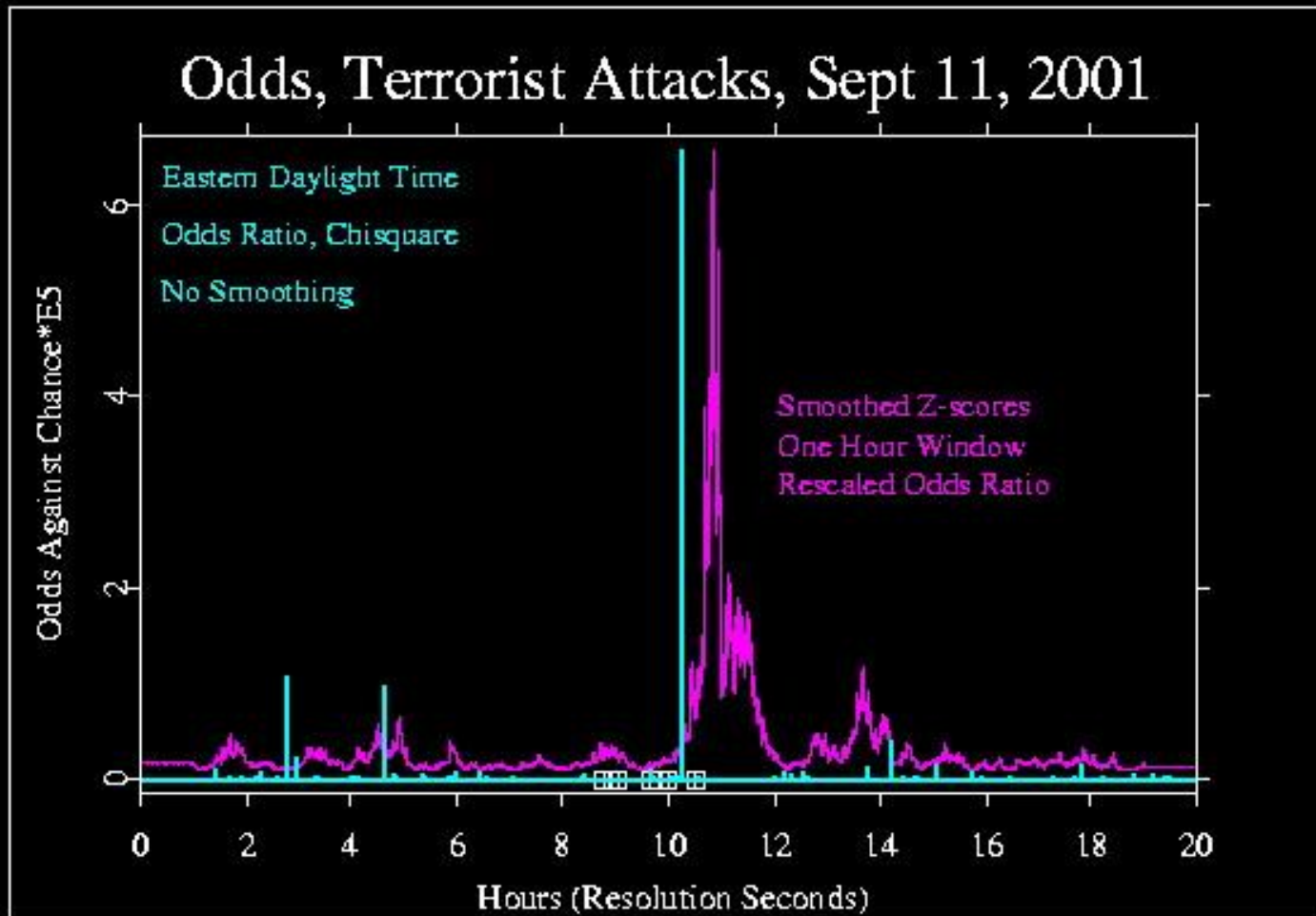
<http://noosphere.princeton.edu>

**Global Consciousness Project**  
Registering Coherence and Resonance in the World

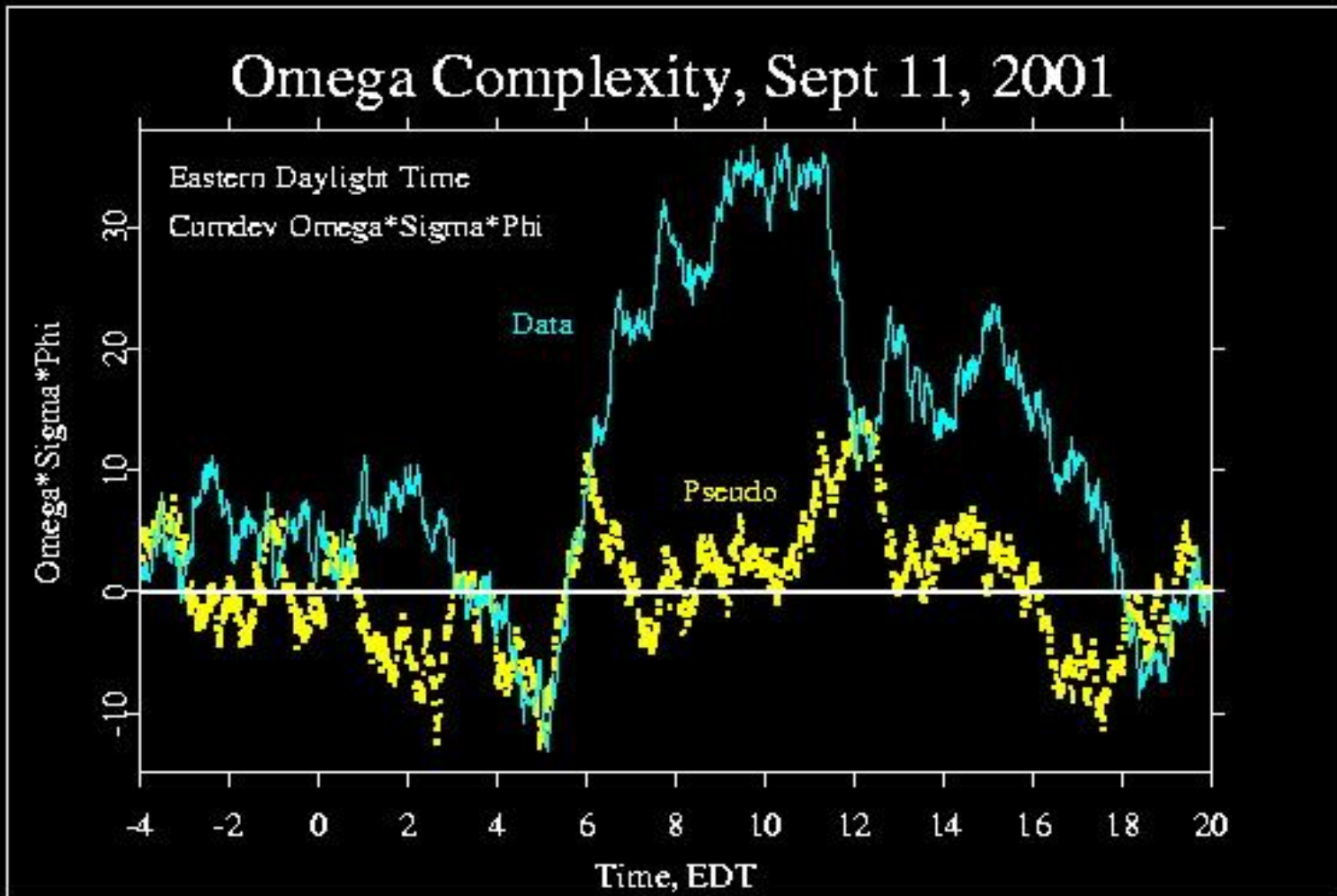
- **The Global Consciousness Project** We do not feel that our minds are isolated within our bodies. In truth, we experience the world with beautiful immediacy, we know our loved ones from afar, and we leap in thought to the stars. Research on anomalies of consciousness shows that we may have direct communication links with each other, and that intentions can have effects in the world despite physical barriers and separations. Evidence compels us to consider that consciousness may operate as a nonlocal field. The Global Consciousness Project (GCP) takes this possibility a step further, proposing that the fields generated by individual consciousness would interact and combine, and ultimately have global dimensions

*Roger Nelson*

# Evidence of Potential Entanglement Field Artifacts of Quantum Domain State Phase Transitions Affecting RNG Datastream Statistical Variants – Mass Mental Synchronicity Event Correlation

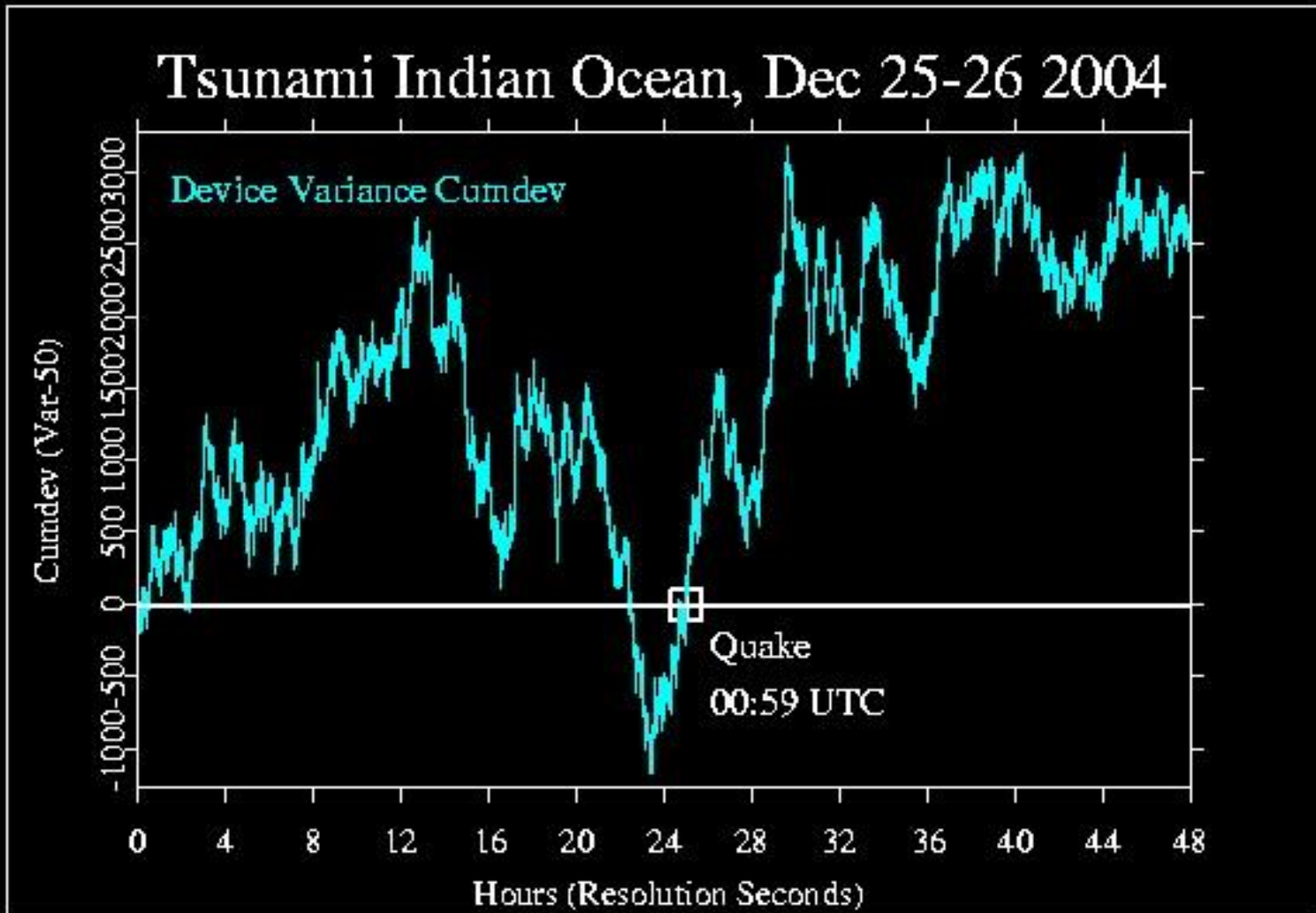


# Evidence of Potential Entanglement Field Artifacts of Quantum Domain State Phase Transitions Affecting RNG Datastream Statistical Variants – Mass Mental Synchronicity Event Correlation

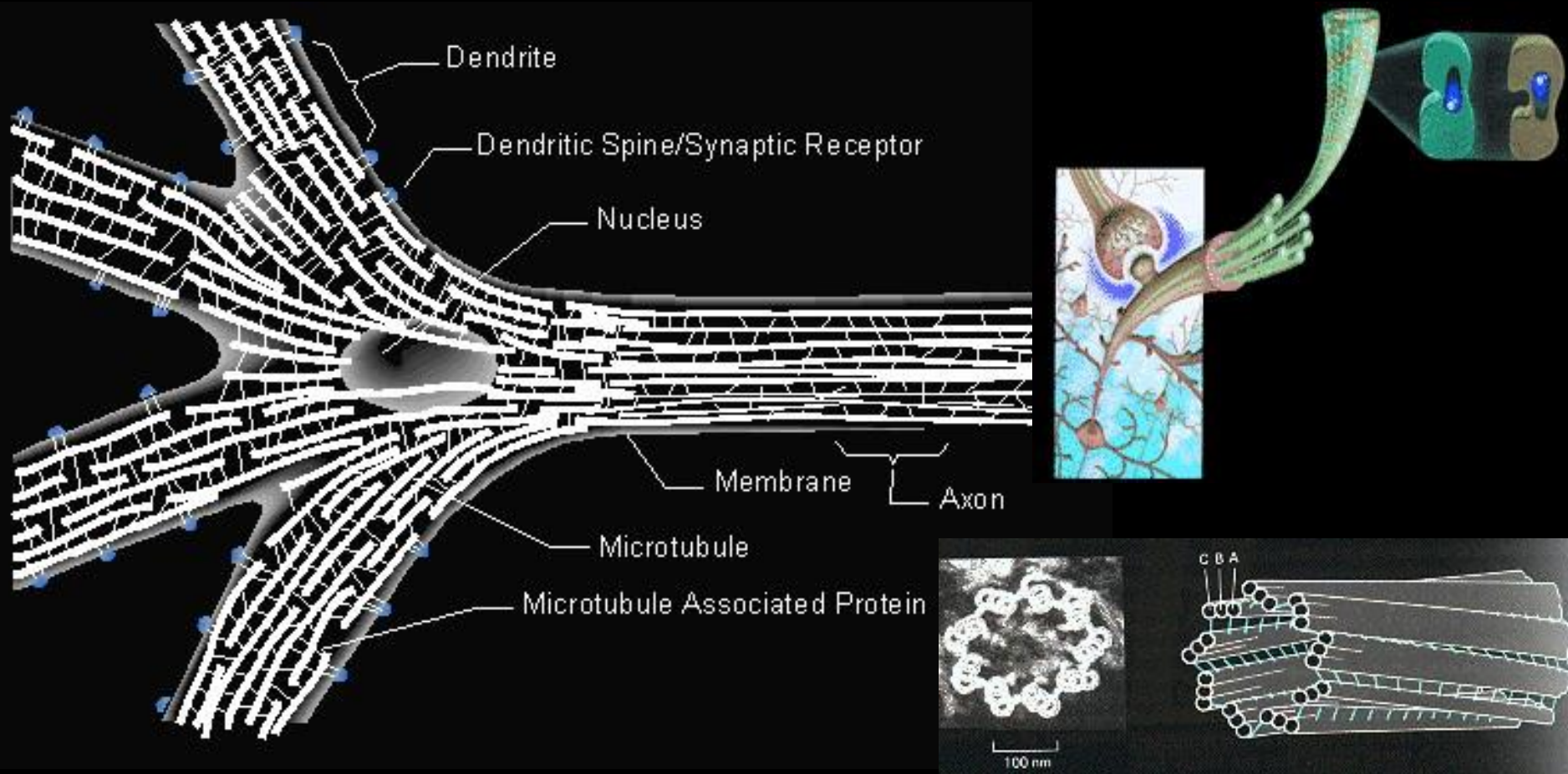




# Evidence of Potential Entanglement Field Artifacts of Quantum Domain State Phase Transitions Affecting RNG Datastream Statistical Variants – Mass Mental Synchronicity Event Correlation



# Quantum / Biophysical – Microtubulin / Neural Interface

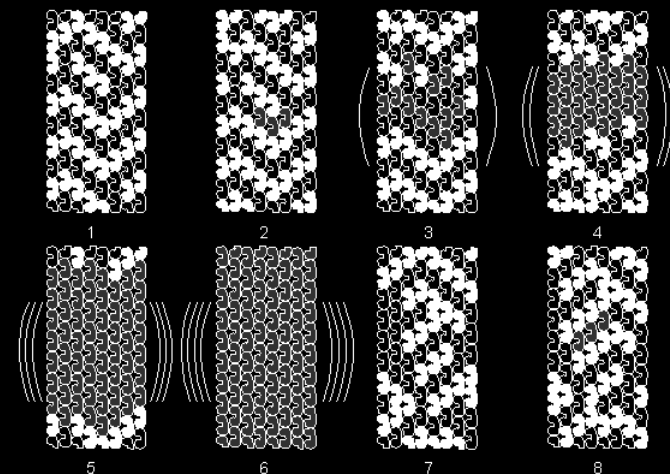
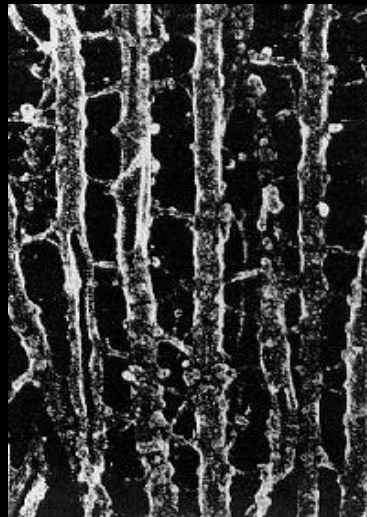
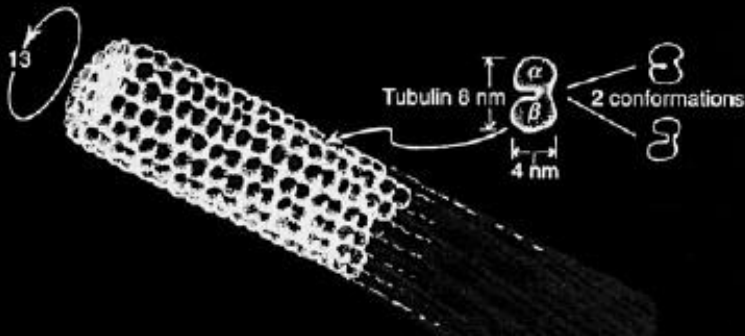


# Quantum / biophysical interaction – theoretical models

## Quantum Brain Dynamics

quantum field-supporting biosubstrate as a dense nanolevel web of protein molecules (microtubules) which penetrates neuronal and neuroglial membrane boundaries

quasi-crystalline ordered water molecules within microtubules and associated with hydrophylic regions on the web of protein filaments, as a biosubstrate for a quantum field which supports super-radiance and self-induced transparency within the microtubules





# Quantum domain interaction – “delayed thought” vs perceived photon activity experiment

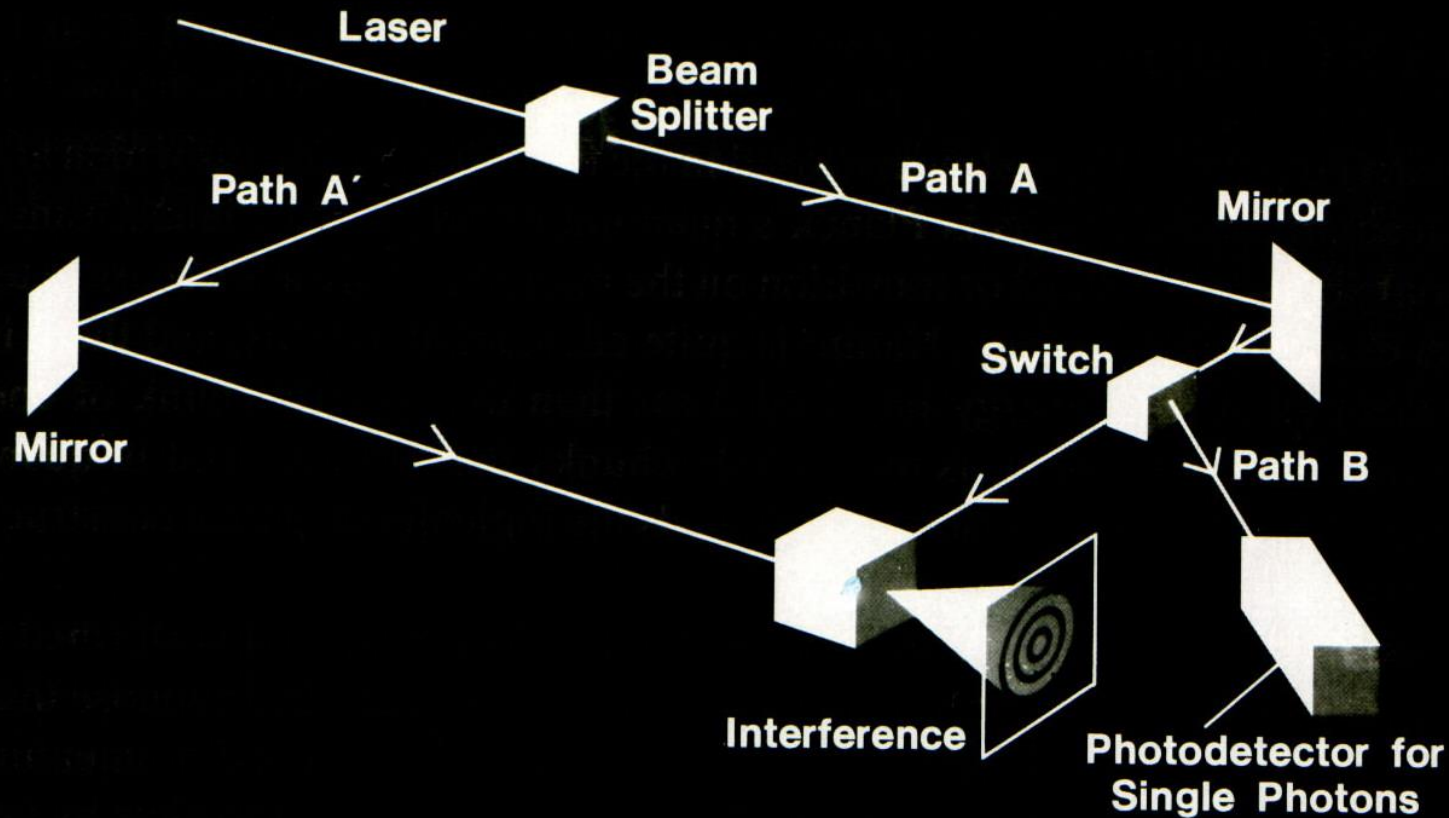


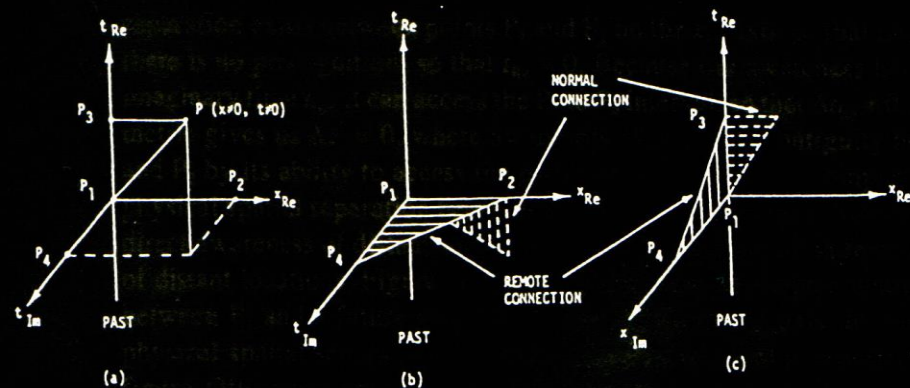
FIGURE 12. A delayed-choice experiment that has been carried out in the laboratory by groups at the University of Maryland and the University of Munich.

# 4D Spatio-Temporal Domain of Biophysical Confinement in Localized Phenomenological Causality Linkage vs 8D / ND Quantum Domain non-Locality Space-Time Metric

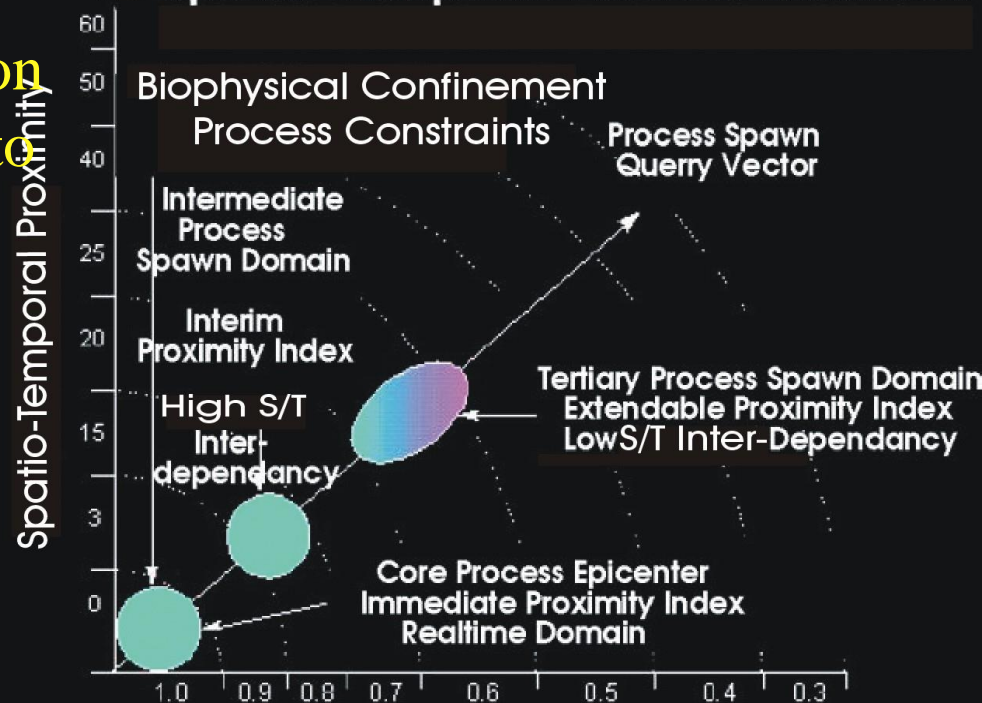
The Speed of Thought: Investigation of a Complex Space-Time Metric to Describe Psychic Phenomena  
Elizabeth Rauscher, Russell Targ

8D "complex Minkowski space"

The Speed of Thought



## 4D Spatio-Temporal Process Manifold

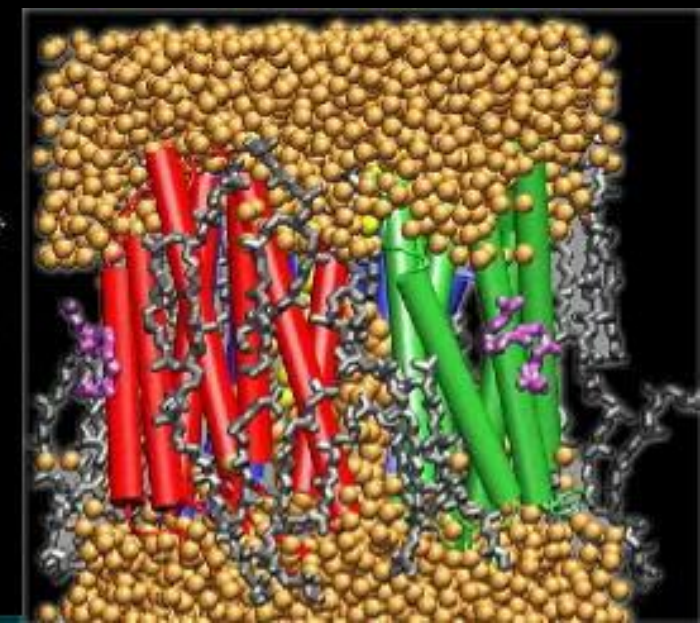
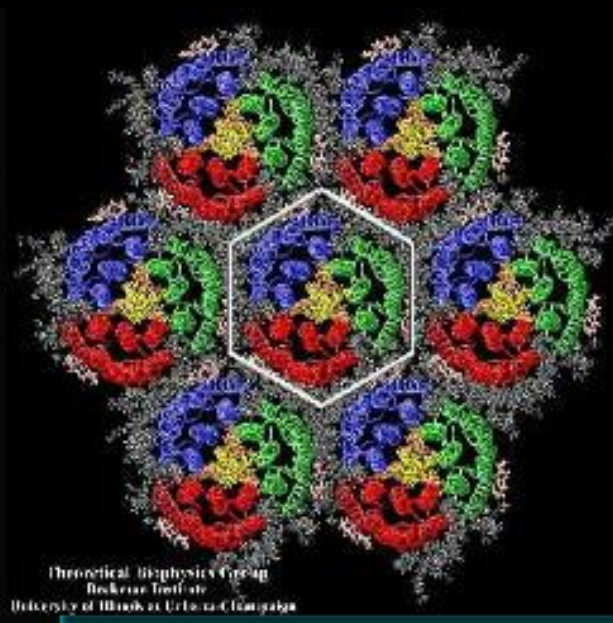
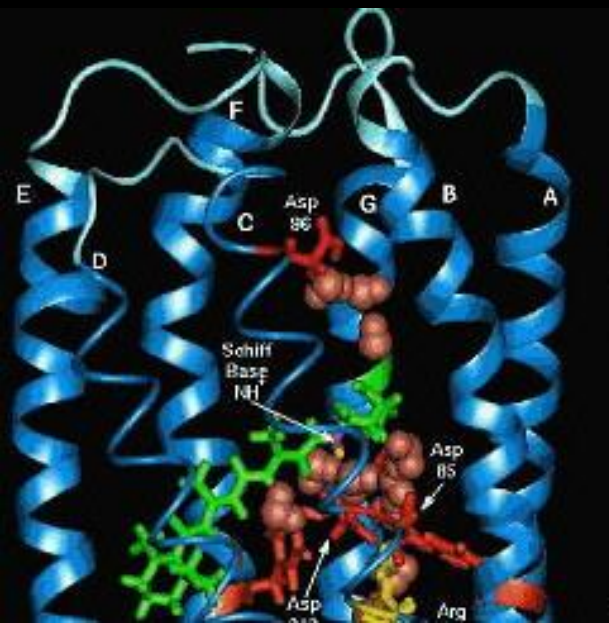


Phenomenological / Causality Linkage Proximity Domains  
 $\leq$  8D Precognitive perception domain model

- A – spatio-temporal separation
- B – spatially separated, temporally synchronous
- C – temporally separated, spatially contiguous

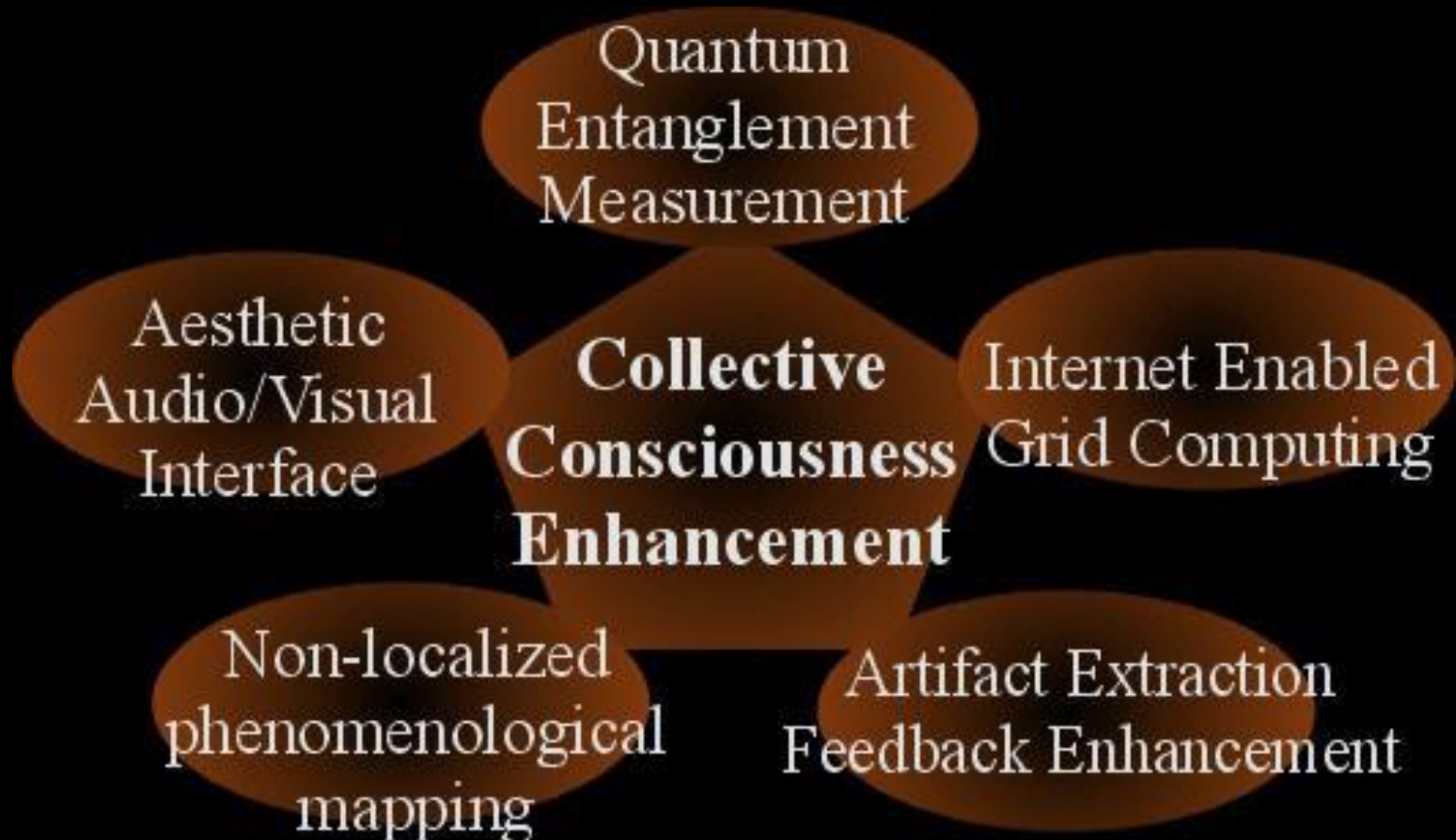
# Nanostructured biomaterials as a dynamic interface for quantum entanglement interaction

- Rhodopsins, other nanobiological - organic material systems
- Engineered electro-photonic transition properties





# Focussed intentionality amplified and tuned as an instrument of influence for “spawning” the history of our future – system architecture overview



# Focussed intentionality amplified and tuned as an instrument of influence for “spawning” the history of our future – system architecture overview

---

Collective Consciousness Enhancement

Evolution of the Hybrid Quantum Meta-Organism



# Evidence of Physical Manifestations of Communication within the Empathic Web

## The Message:

- ❑ Respect for all Living Things
- ❑ Respect for the Planet as a Living Thing
- ❑ Respect for the Cosmos as a “Living System”

