

Exploration into The “Invokation of Rapture” Phenomena, via Aesthetic Content Spawned from Biological Metaphors in Computing – a Possible Next Increment toward Cosmological Evolution



Contact 2003, NASA / Ames

Charles Ostman

Senior Fellow - Institute for Global Futures

Chair, Nano Electronics & Photonics Forum

tel 510 549 0129 email charles000@nanosig.org

<http://www.technofutures.com/charles1.htm>

<http://www.NanoSig.org/nanoelectronics.htm>



Exploration into The “Invocation of Rapture” Phenomena, via Aesthetic Content Spawned from Biological Metaphors in Computing – a Possible Next Increment toward Cosmological Evolution

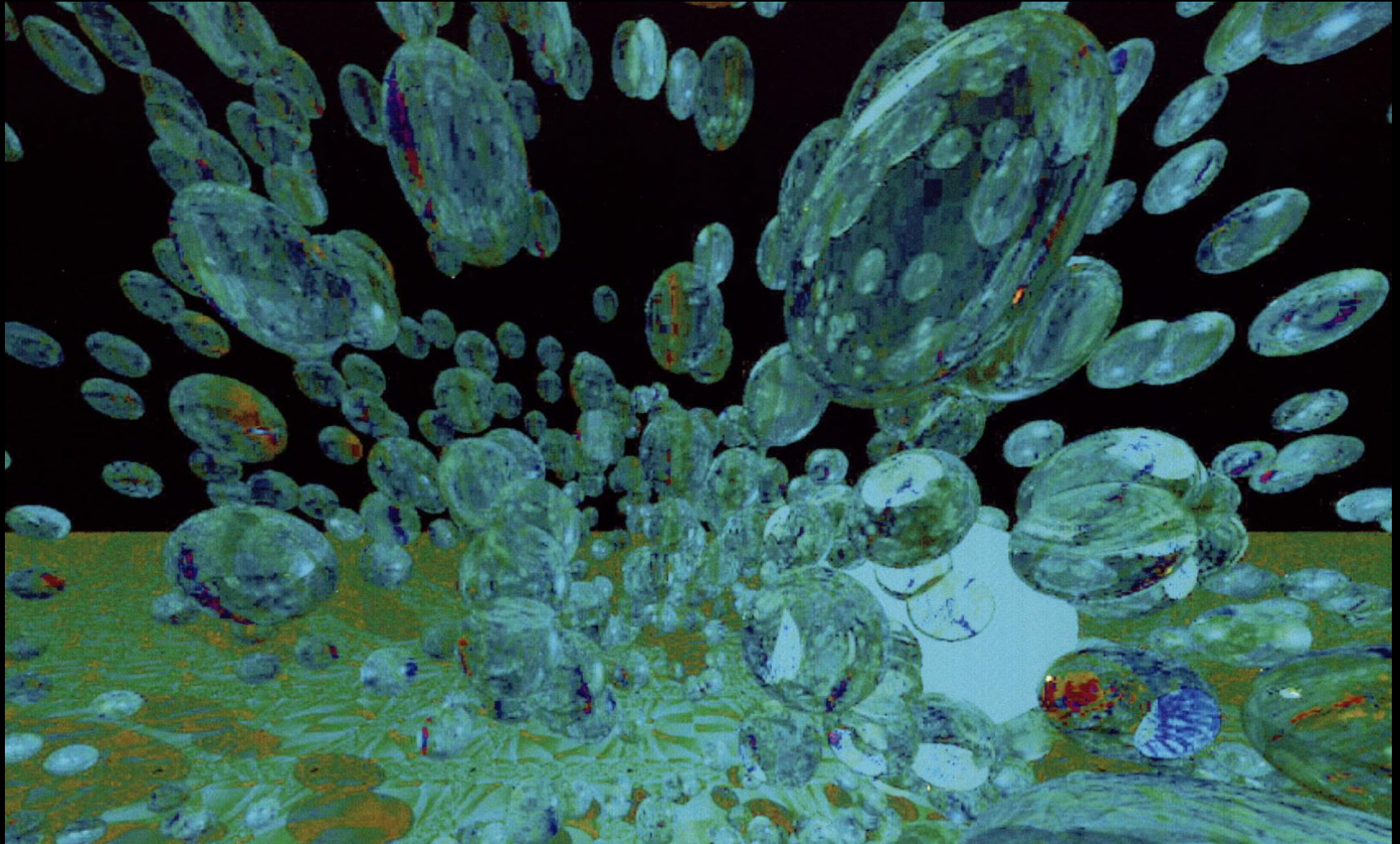


Previous Contact Themes presented:

- ❑ Quantum Astrobiology - The Communication of Presence and Intention as Co-Occupants of an N-Dimensional Quantum Universe
- ❑ The In-Silico Biology Paradigm – Gateway to Virtual Exobiology
- ❑ The Integration of Consciousness Domains in the Emergent Operational Ecology of Human and Synthetic Entities - the Next Evolutionary Increment
- ❑ Development of Linguistic Systems and Communication Protocols with Species of Artificial Lifeforms and Synthetic Sentients as a requirement for interaction with alien species
- ❑ Process Modalities of Applied Computational Resource Which Mimic the Physiologies of Living Systems as a mechanism for communication with real and synthetic entities

The next Evolutionary Increment . . .

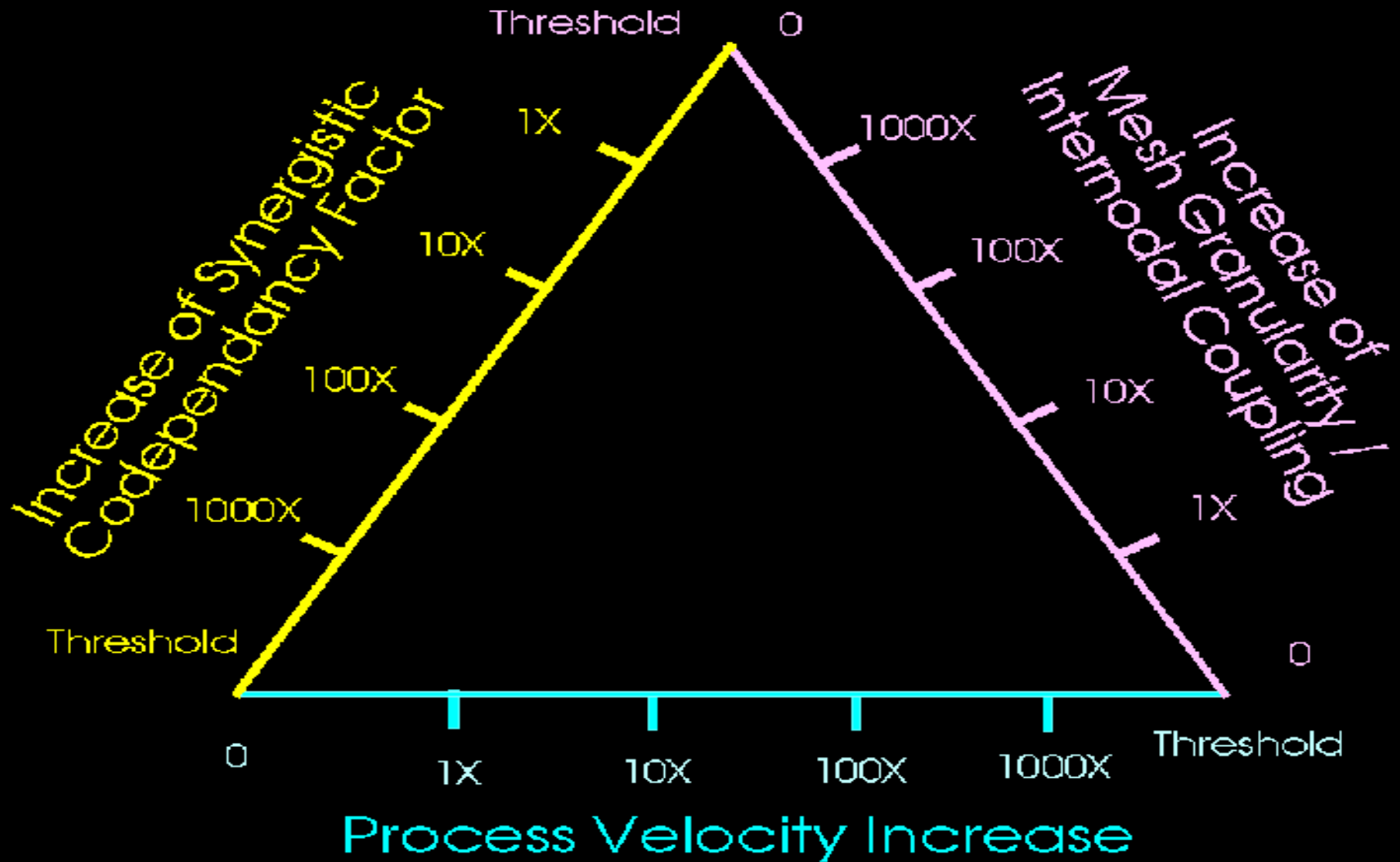
Hyperdimensional Access



Contextual Cognition in the Emergent Operational Ecology > Hyperdimensional Existence Navigation

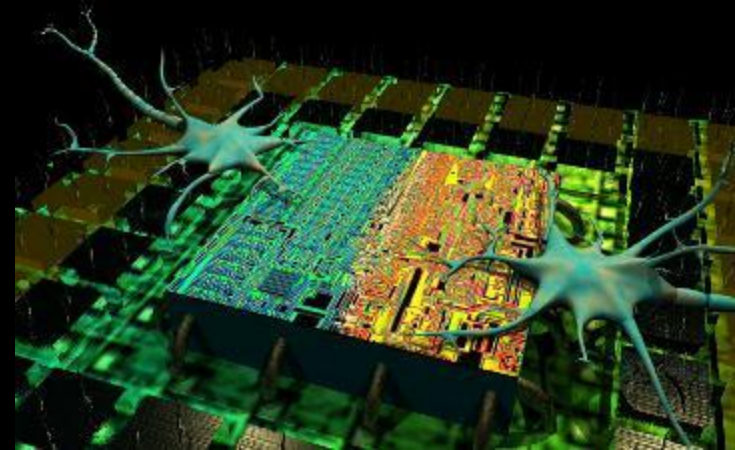
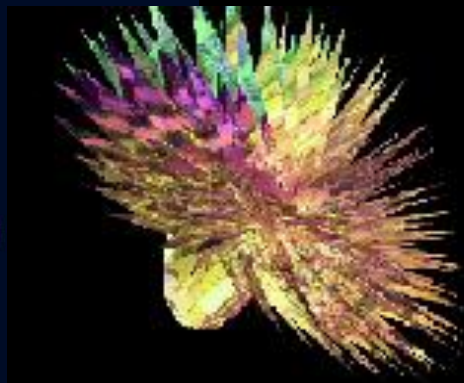
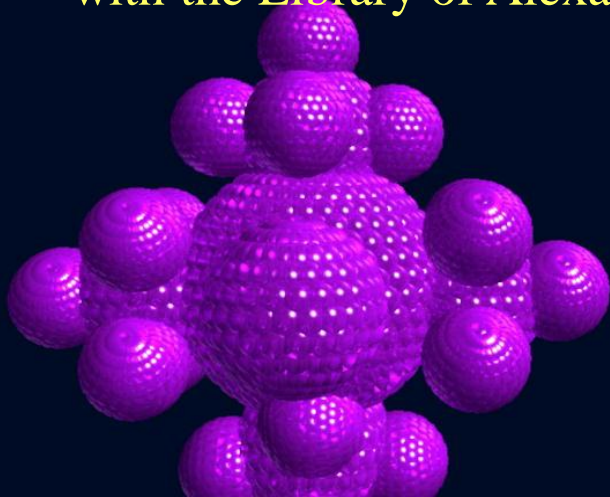


Convergence Syndrome Triad



Cultural Imperatives of the Evolutionary Eventstream - Emergent

- Knowledge complexity, scale, and velocity is exceeding human capacity for mission critical decision rendering compressed into ever shortening time scales.
- Development and deployment of complex metasystems of artificial entities, synthetic lifeforms, and emergent intelligences becomes the acceptable “culture norm” of the near future.
- Perceived boundaries of the “synthetic” and organic, the “virtual” and the real, become enmeshed into an existence continuum.
- The internet is the cultural and functional equivalent of Gutenberg’s press, combined with the Library of Alexandria, manifest in a realtime global environment



Existence Imperatives of the Evolutionary Eventstream - Ubiquitous

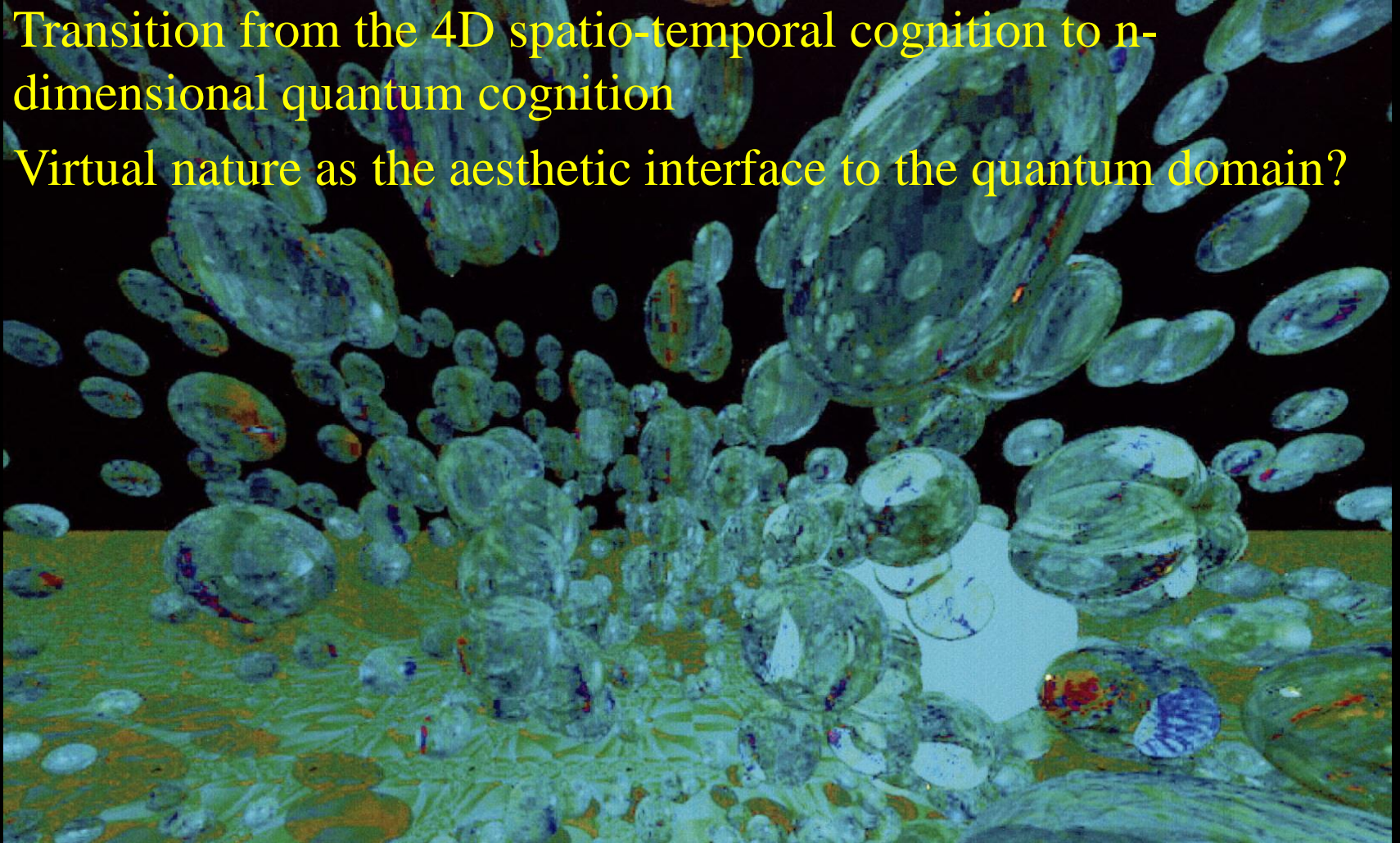
- ❑ Across virtually every known cultural, societal, and geographic variation of human civilization, one singular commonality has been consistently ubiquitous: an emotional, if not spiritual engagement with the aesthetic content in nature which transcends mere logical lexicon or reasoned response.
- ❑ Embedded within the innermost sanctum of the human psyche, there is an emotional engagement phenomena which I refer here to as the "*invokation of rapture*" index.



The next Evolutionary Increment . . .

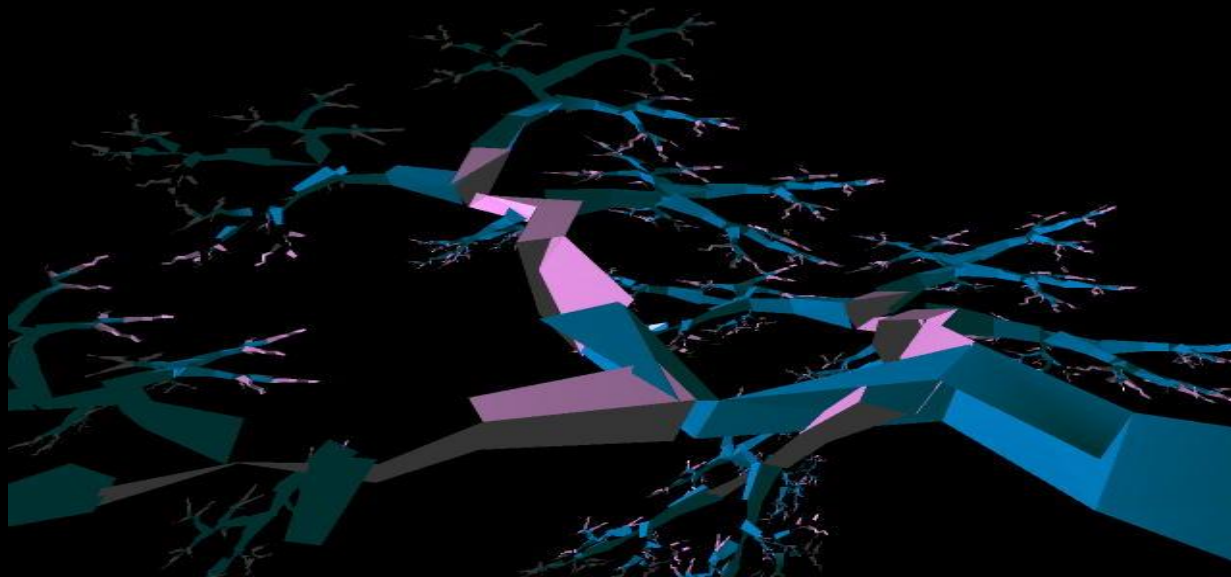
Hyperdimensional Access

- Transition from the 4D spatio-temporal cognition to n-dimensional quantum cognition
- Virtual nature as the aesthetic interface to the quantum domain?



Evolutionary Process Dynamics

- ❑ Evolution tends to be a trauma induced process
- ❑ Fractal system model - operates at all scales, from the individual, to the collective, entire systems
- ❑ Provided the periodicity and amplitude of trauma cycles do not exceed the system capacity to respond, the system tends to evolve to a more robust form



Think Different > Think Holographic

The Next Evolutionary Challenge . . .

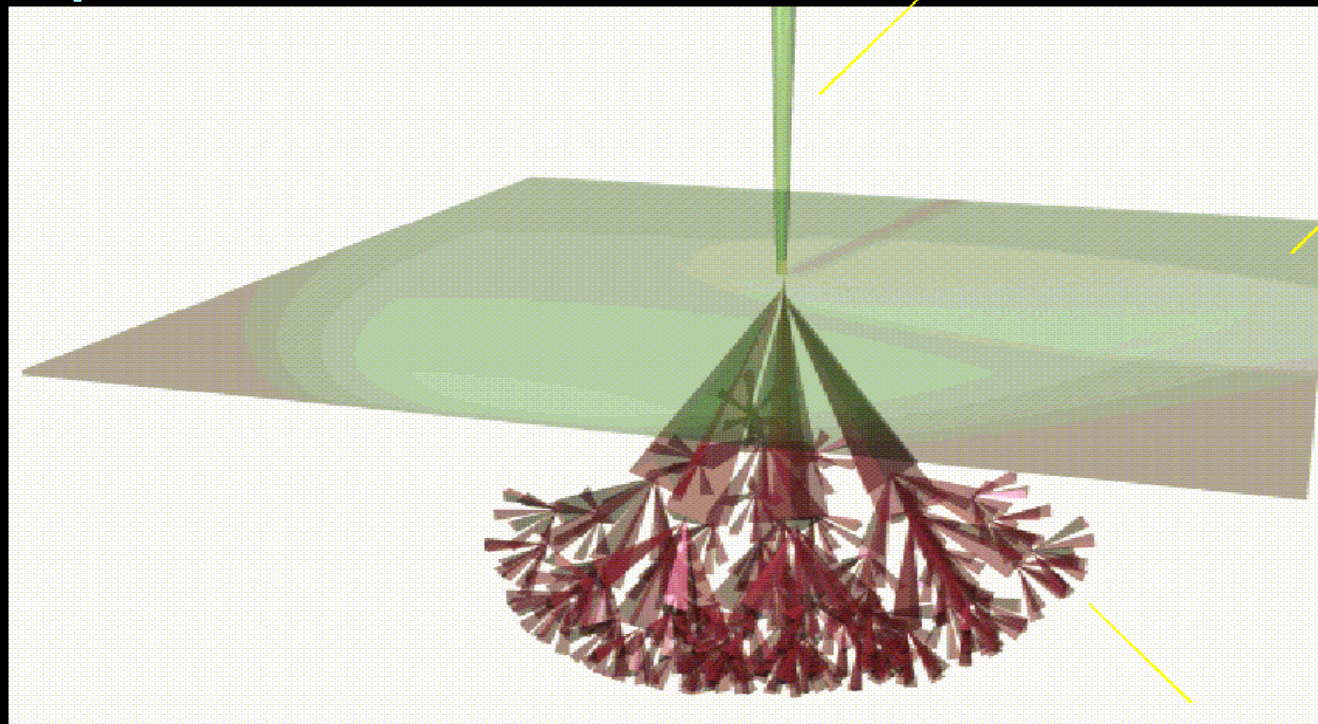
Perceived Existence extending beyond the 4D Manifold, evolving into an

N-Dimensional Operational Ecology

Cognition
Space

Conditionalized
Cognition Vector

Contextual
Cognition
Threshold
Boundary

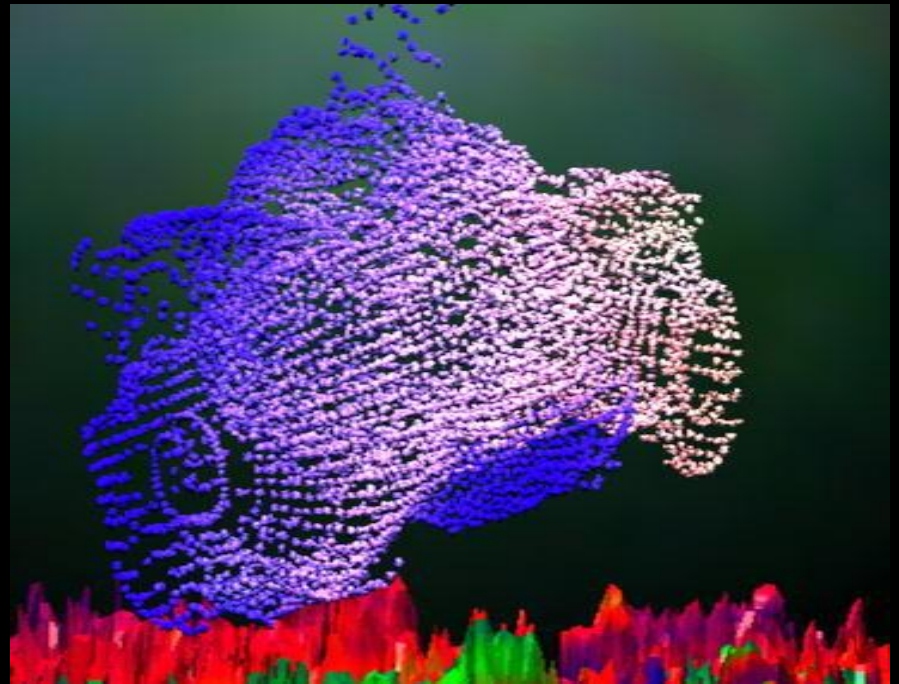
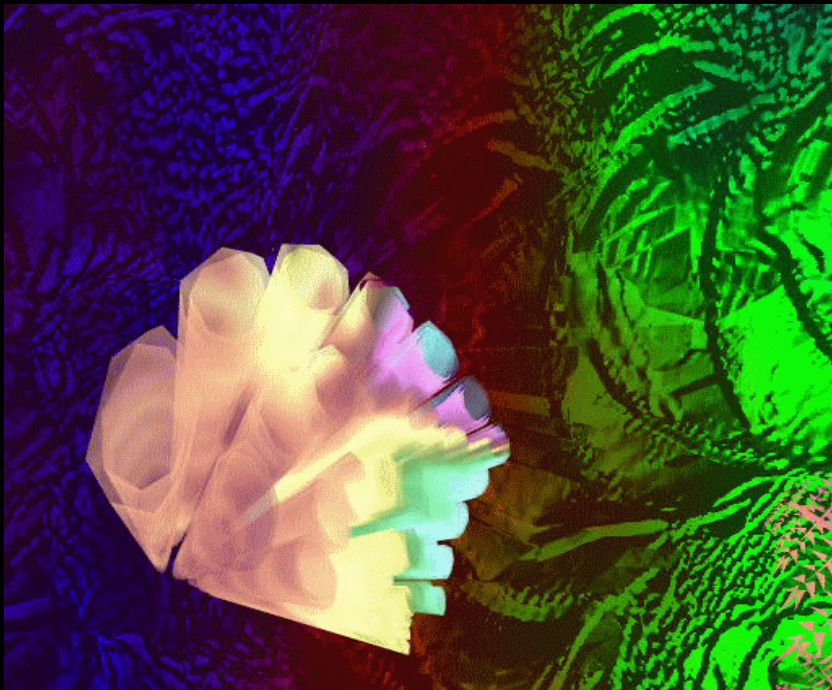


Perception
Space

N-Dimensional
Tiered Process Vectors

The Operational Ecology – Translation into Virtual Nature

- ❑ Self evolving information architectures, process platforms, knowledge ontologies
- ❑ Self assembling / self organizing molecular systems, biological and non-biological



Process Elements of the Emergent Human / Internet Symbiosis



Internet as an Organism Threshold

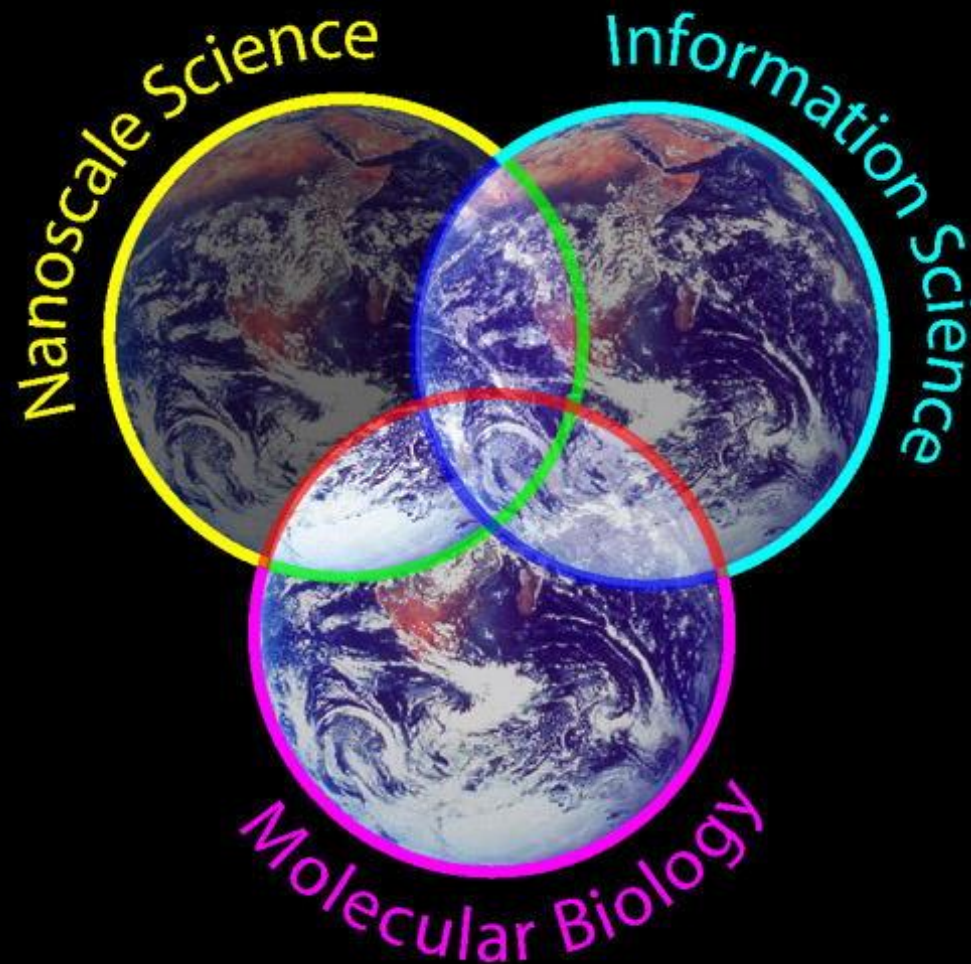
Biological Metaphors in Computing
Self Organizing Routing Structures
Defensive Networks
Synthetic Sentience

Intelligent Agent Entities
Multi-Agent Colonies / Hierarchies
Self Organizing Knowledge Ontologies

Distributed Artificial Lifeforms
Collective Symbiotic Intelligence
Evolutionary / Genetic Computation

Realtime Tele-Existence Streaming
Pyshco-ergonomic Interface
Biometric Transparency

The Emergent Infotech / Biotech / Nanotech Operational Ecology



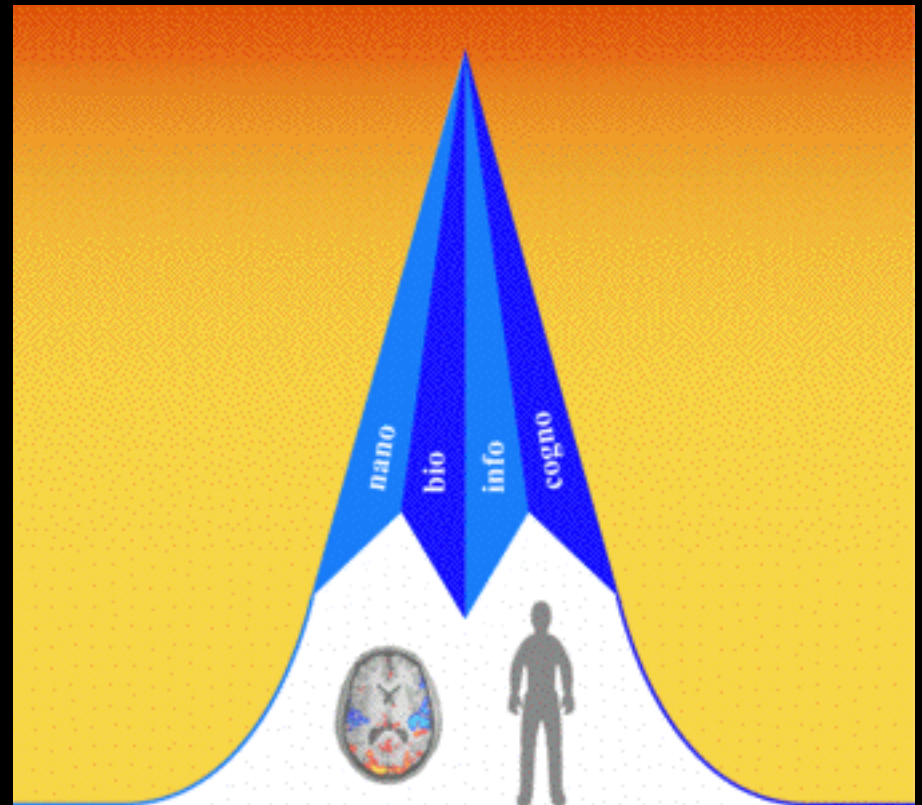
The Emergent Infotech / Biotech / Nanotech Operational Ecology

NBIC Conference

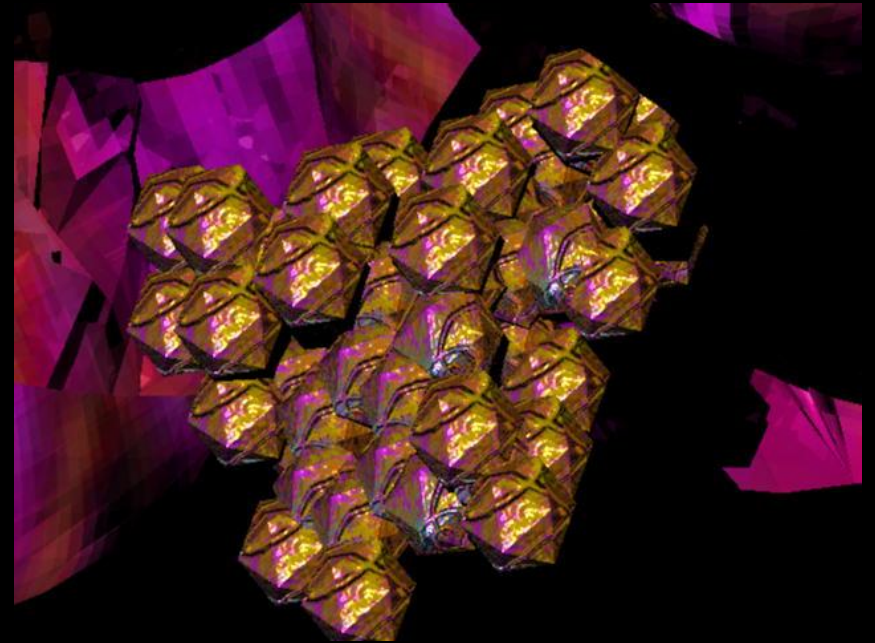
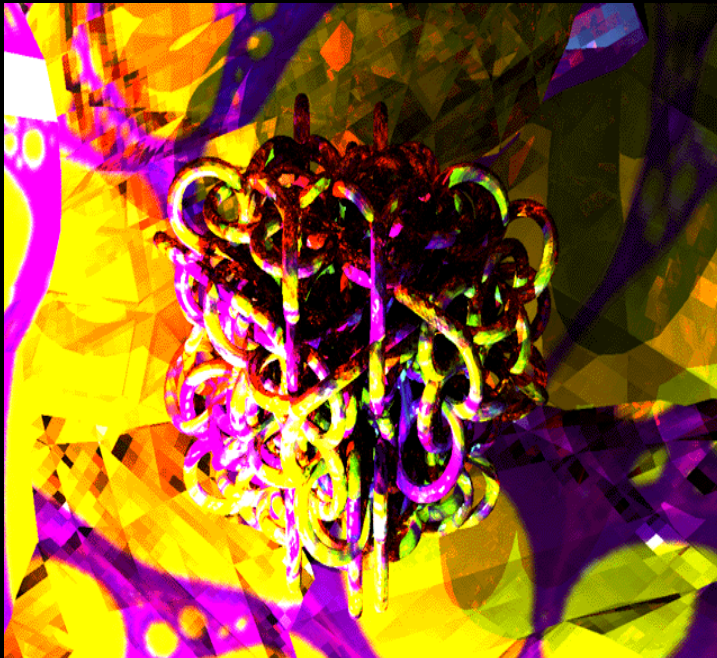
Converging Technologies
for Improving Human
Performance:

Nanotechnology,
Biotechnology, Information
Technology and Cognitive
Science

NSF/DOC-sponsored report
<http://www.wtec.org/ConvergingTechnologies>



Hybrid Lifeforms - Self Organizing Systems



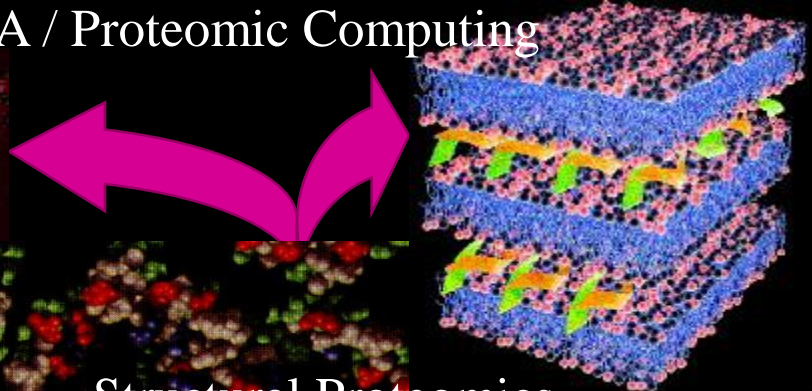
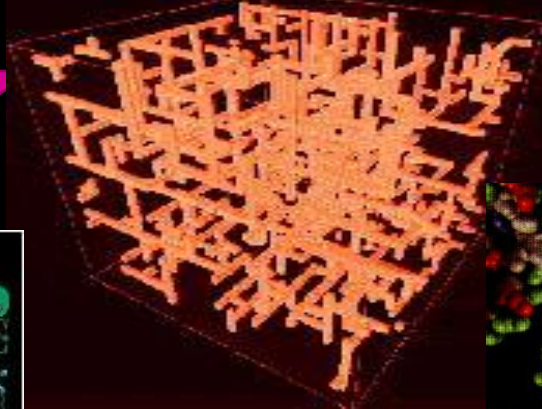
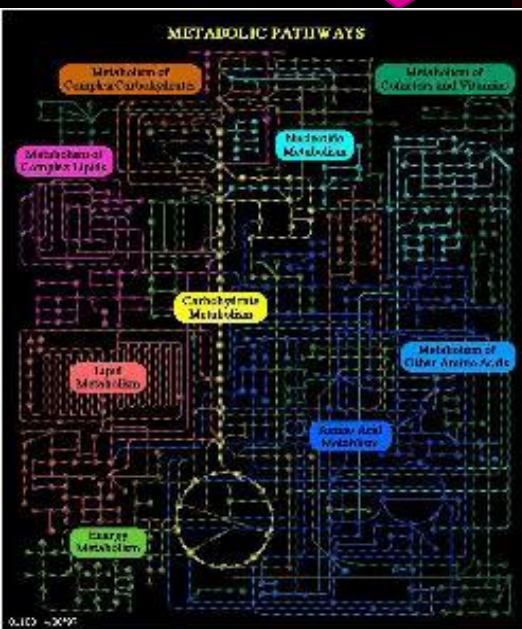
Infotech / Biotech / Nanotech Development Stream Example

Biological Metaphors in Computing

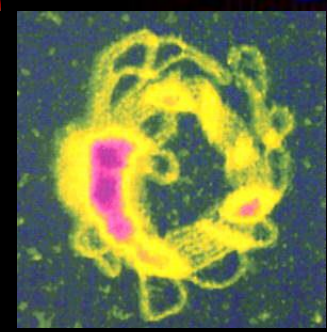
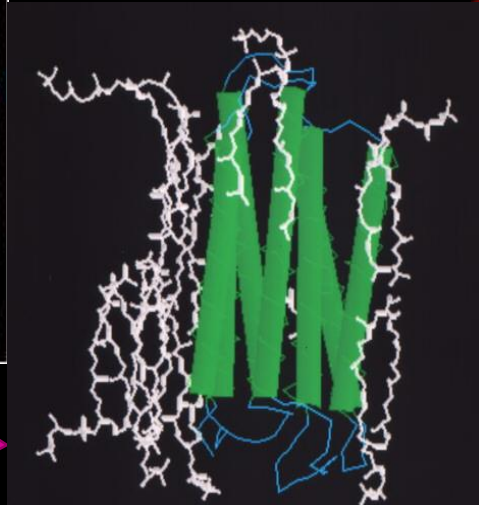
DNA / Proteomic Computing

Bioinformatics

In Silico Biology



Structural Proteomics

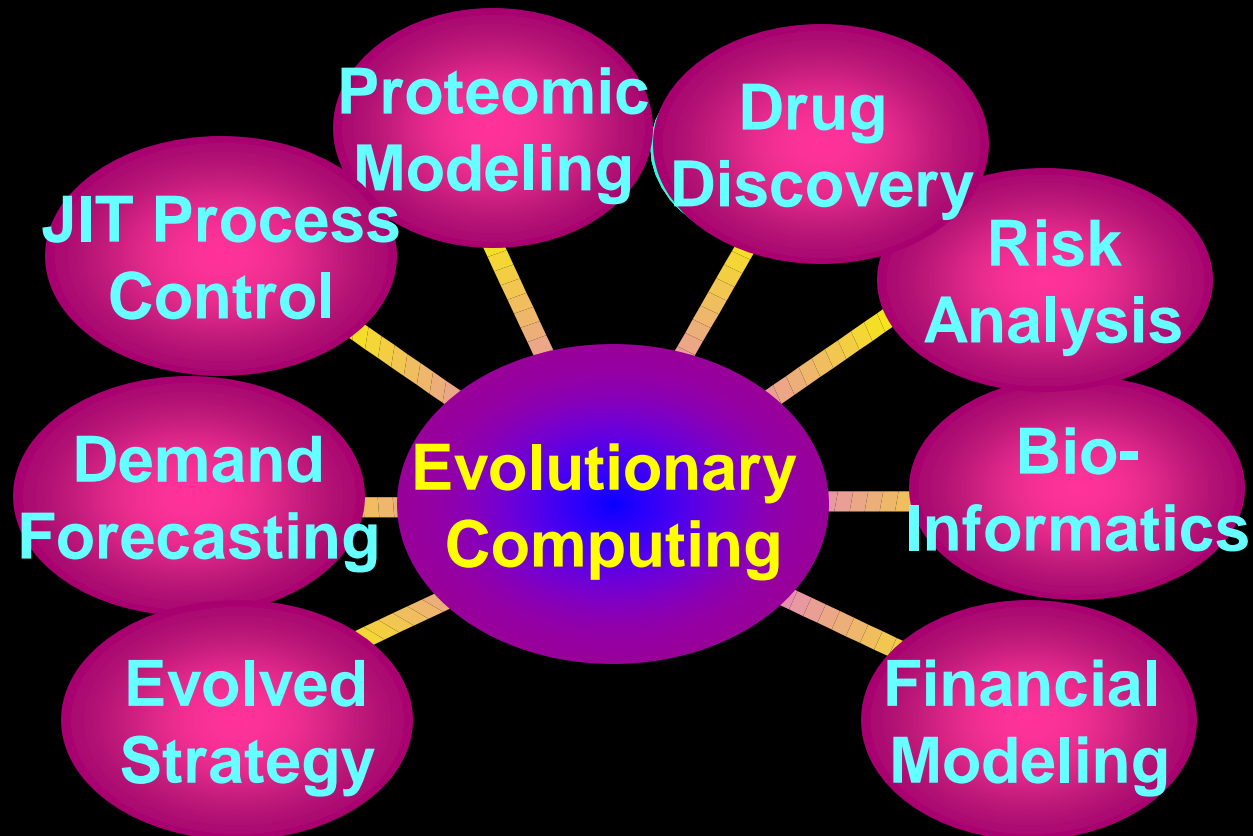


Genetic / BioMed Proteomics

3/6/2019

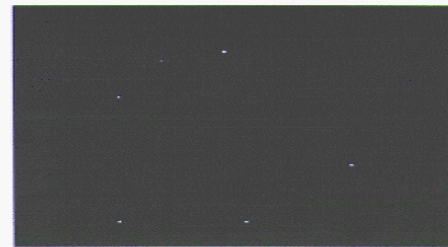
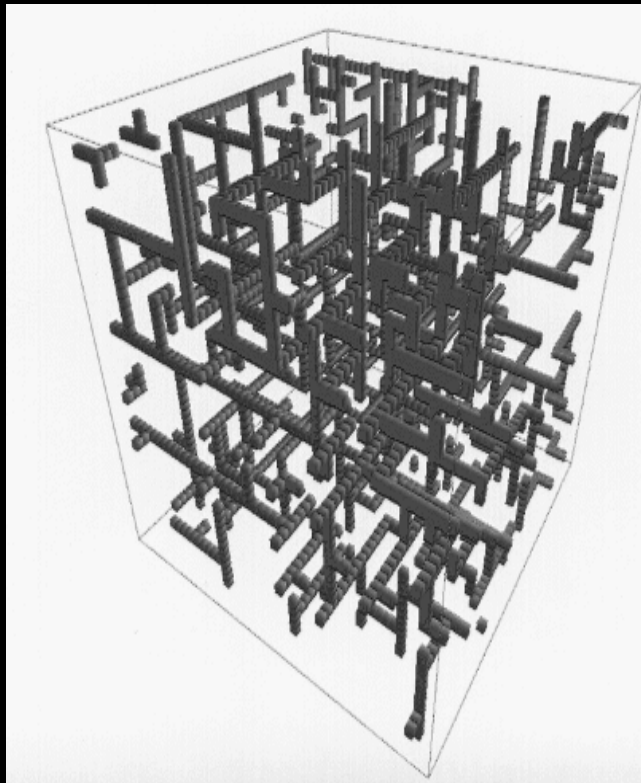
Convergence Node - Evolutionary Computing

- Genetic Algorithms
- Self Evolving Systems
- Autonomous Functionalities

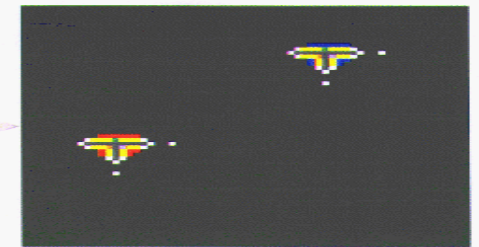


Example Technology - Self Evolving “Artificial Brains”

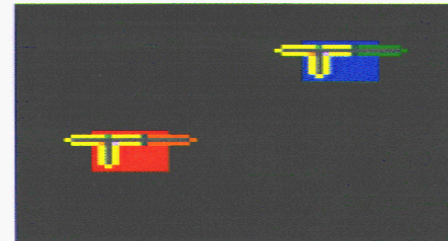
- Evolutionary Computing
- Artificial Life



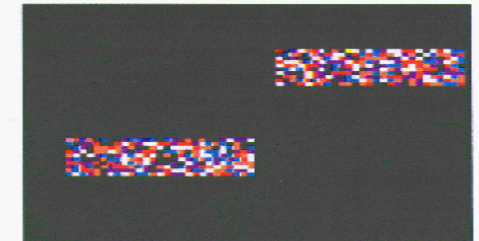
Initial Pattern



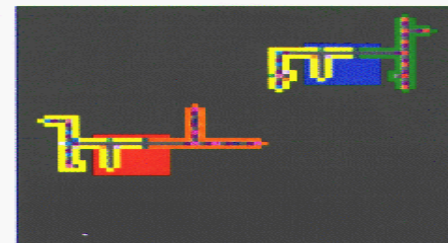
Growth of Neuron Bodies



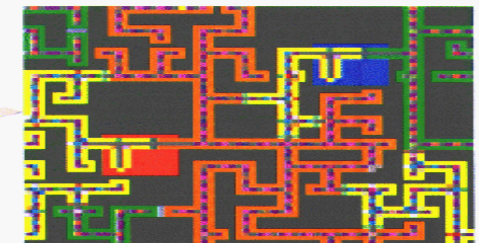
Excitatory and Inhibitory Neurons



Chromosomes

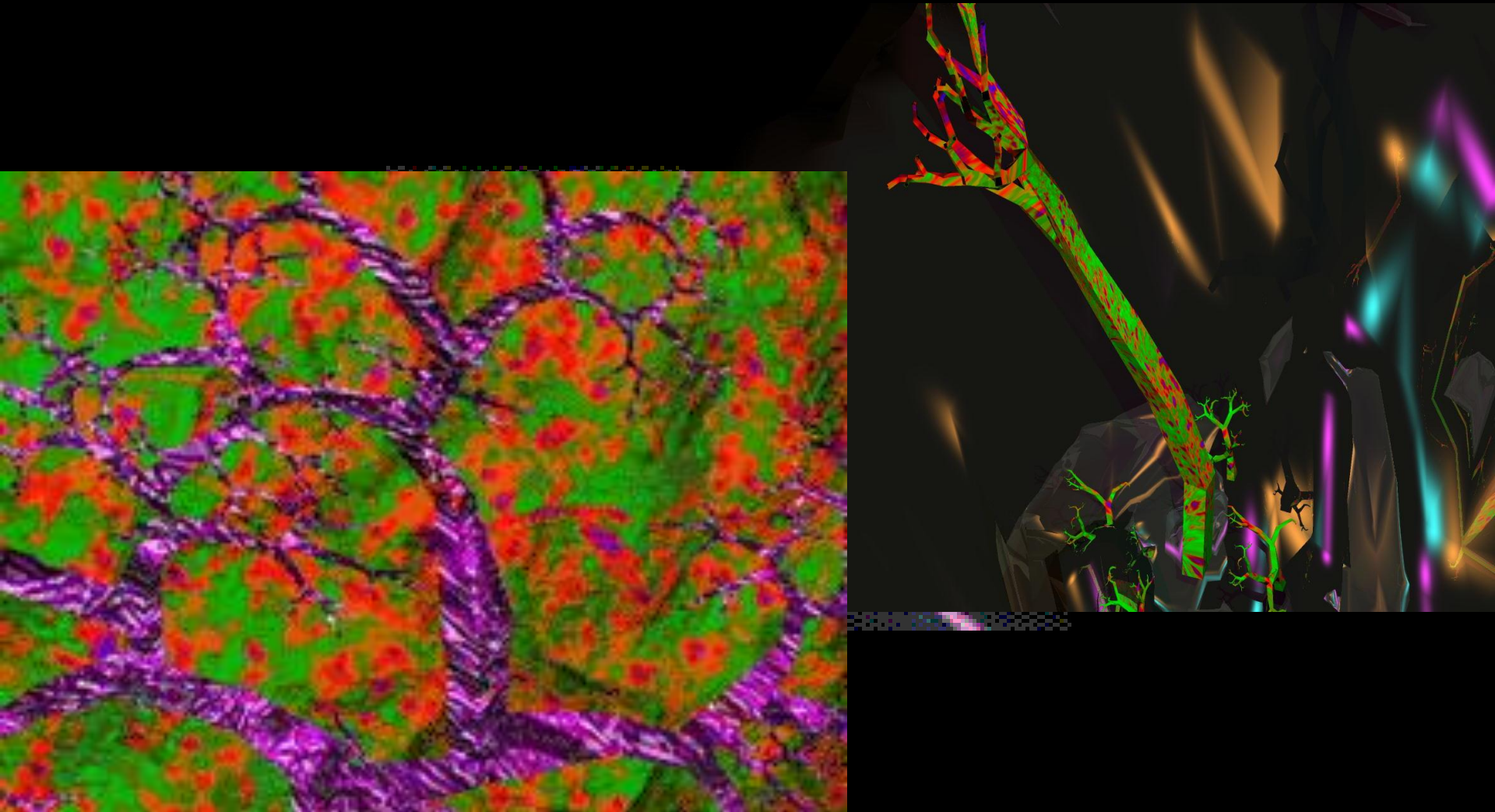


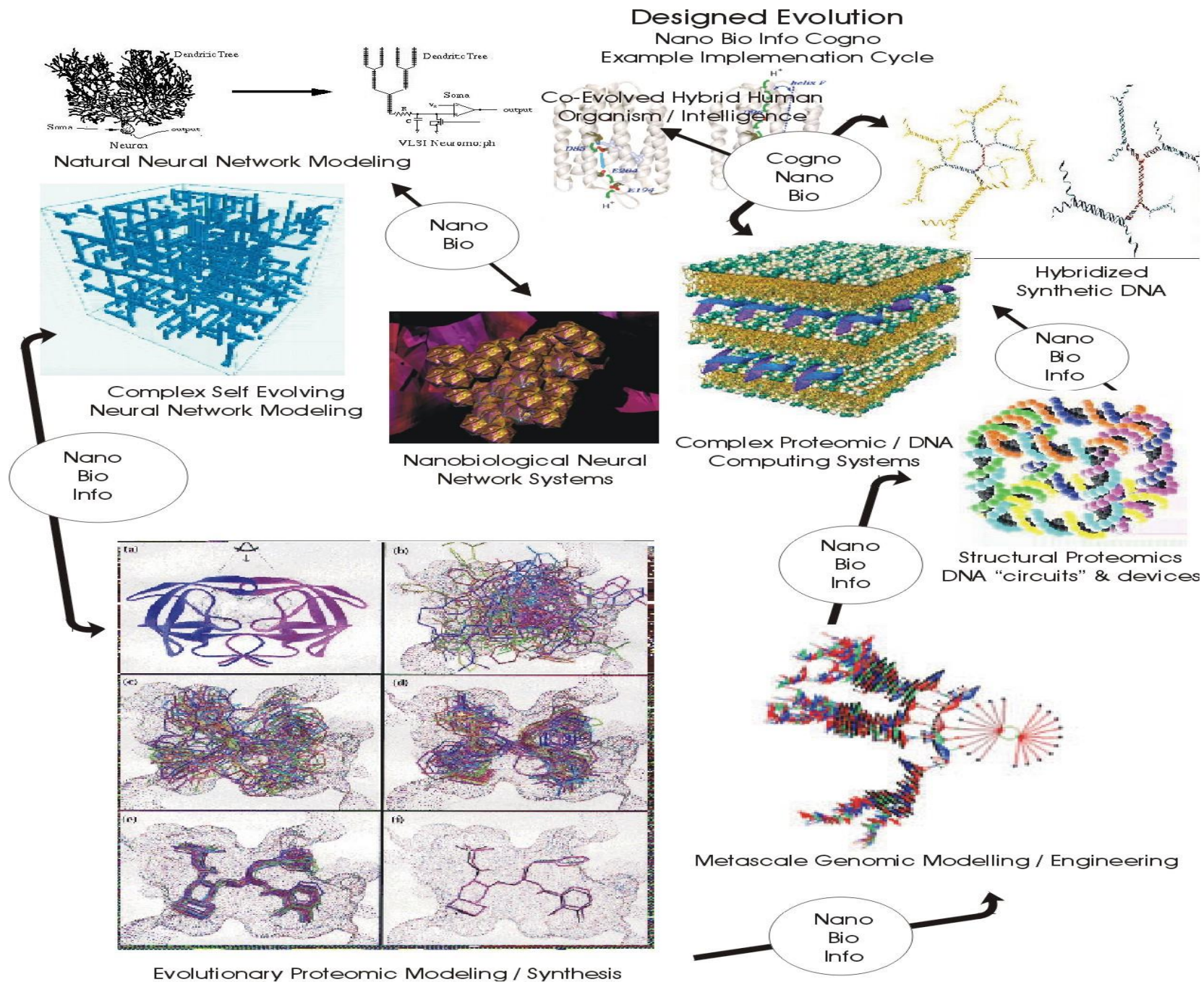
Growth Phase of Axons and Dendrites



Grown Neural Network

Symbiotic Integration with the Ubiquitous Synthetic Sentience Process Manifold



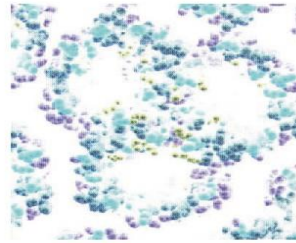
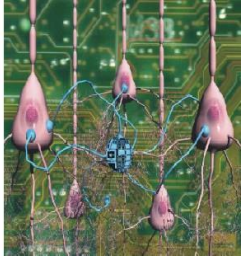


Co-Evolution with Emergent Intelligences

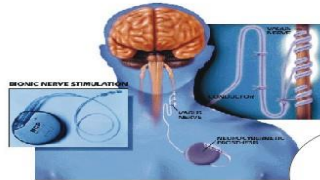
Genetic / Biophysical Enhancement

Accelerated Environmental Adaptation

Extended Longevity & Functionality



Biocompatible Molecular
Surfaces / Interface

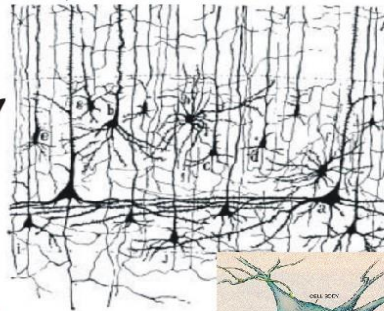


Biodevice / Implant
System Interface

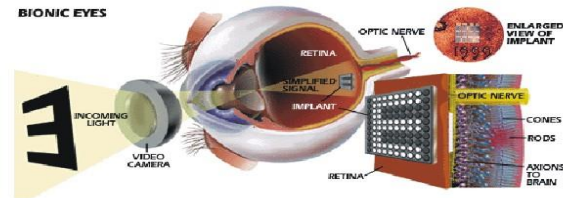


Nano
Bio

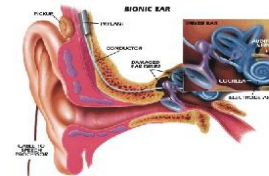
Nano
Info
Bio



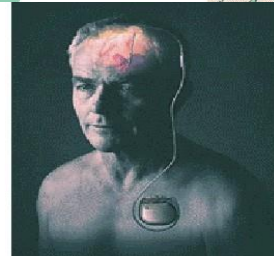
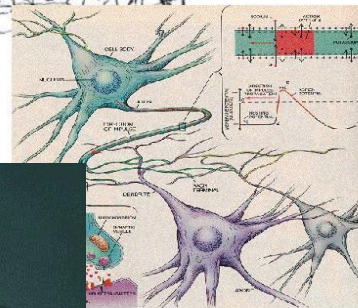
Neural
Mapping



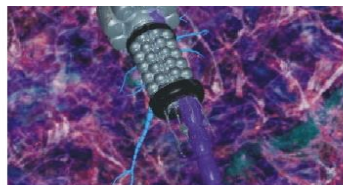
Complex Integrated Biodevice /
Functional Restoration



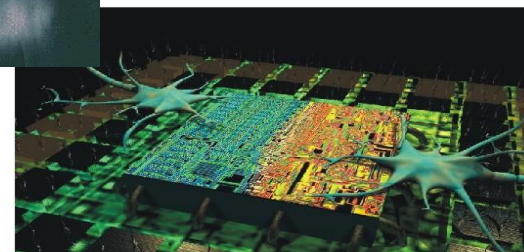
Nano
Cogno
Bio



Cogno
Nano
Bio



Cellular / Neural Repair

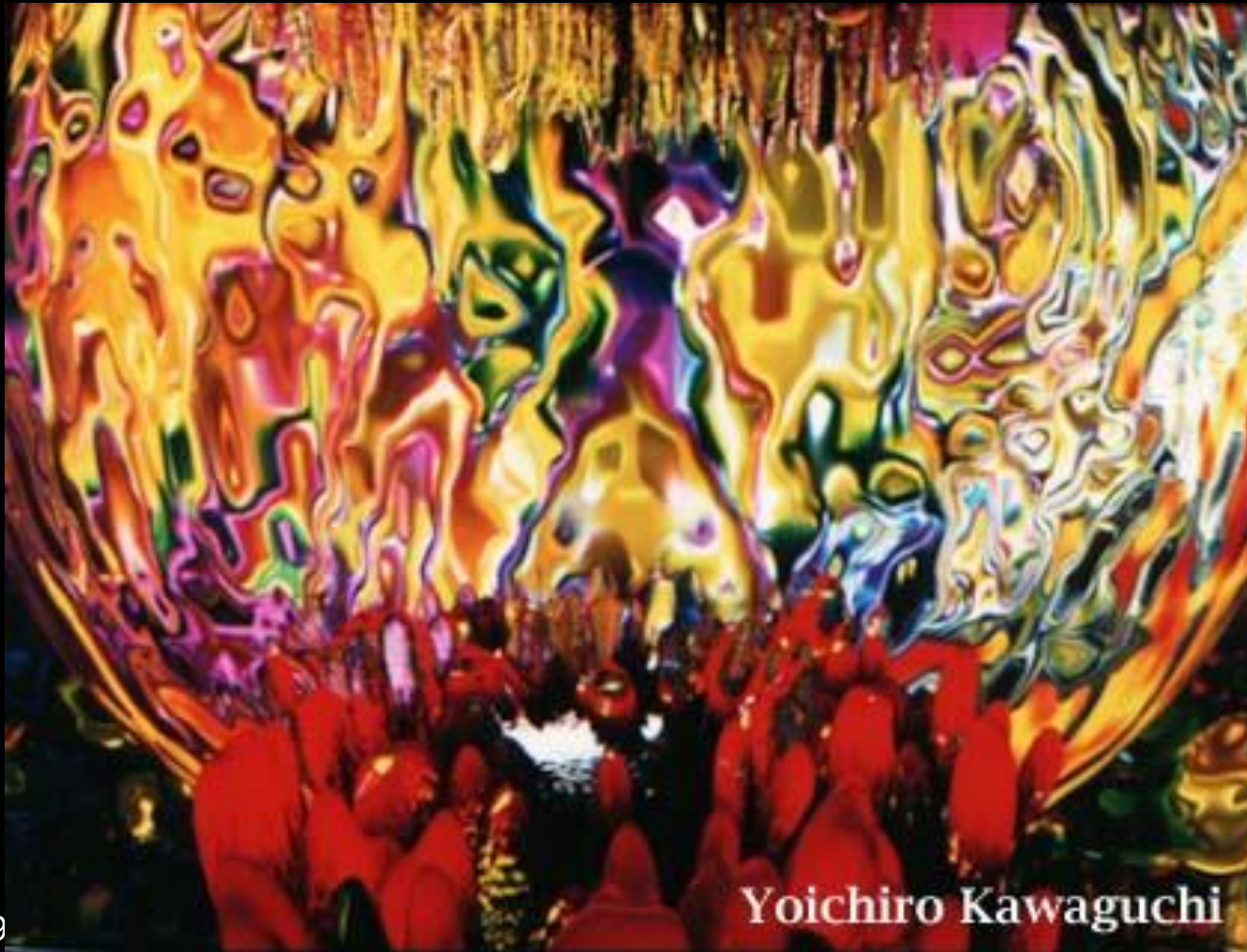


Cellular / Neural Interface

Extended Sensory Capacity
Intellectual / Cognitive Capacity
Strength, Endurance Attributes
Extended Longevity

Biological Metaphors in Computing

Yoichiro Kawaguchi



3/6/2019

Yoichiro Kawaguchi

Biological Metaphors in Computing

Yoichiro Kawaguchi



Yoichiro Kawaguchi

Biological Metaphors in Computing / Immersive Environments

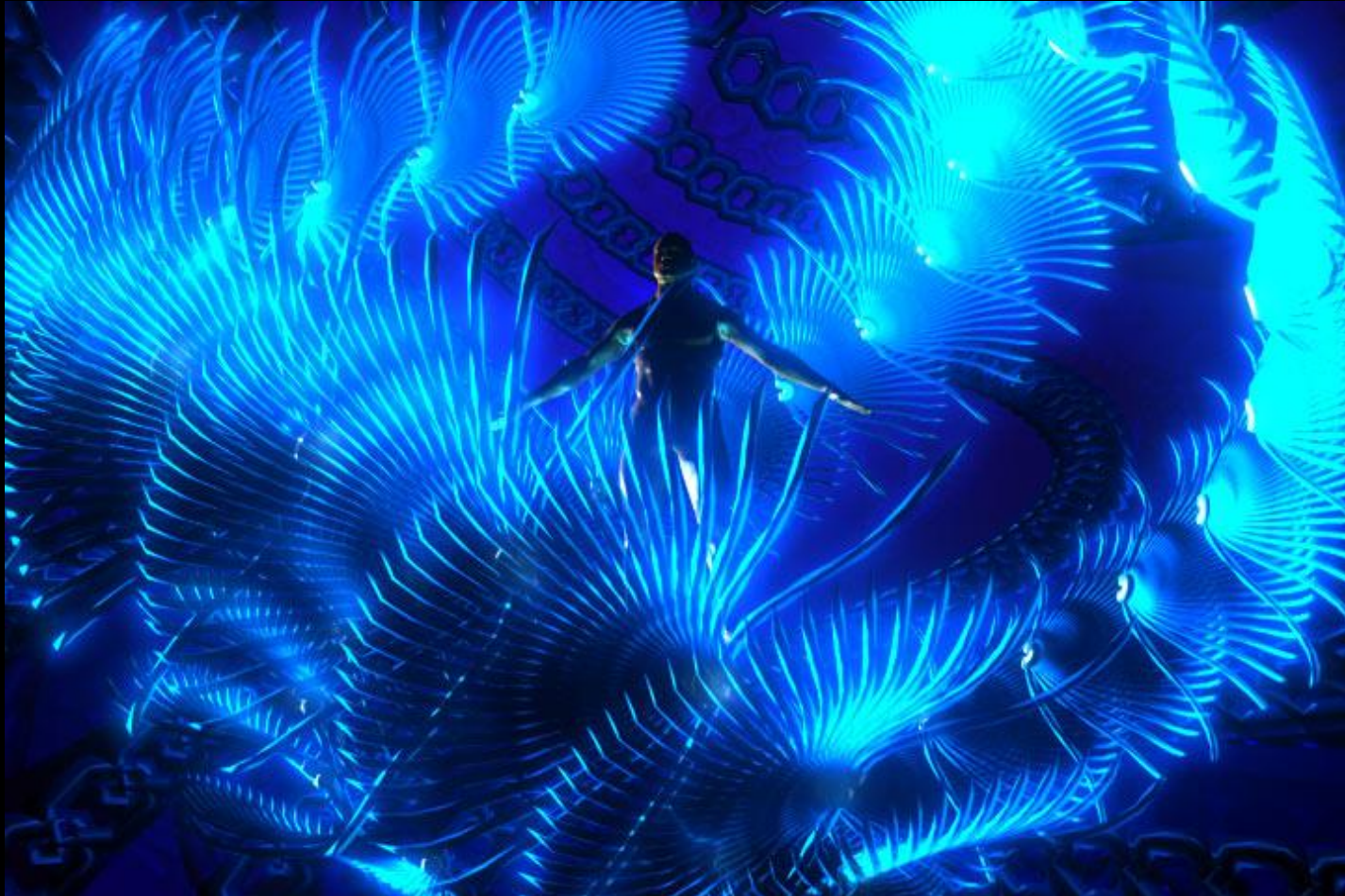
Char Davies



3/6/2019

Biological Metaphors in Computing

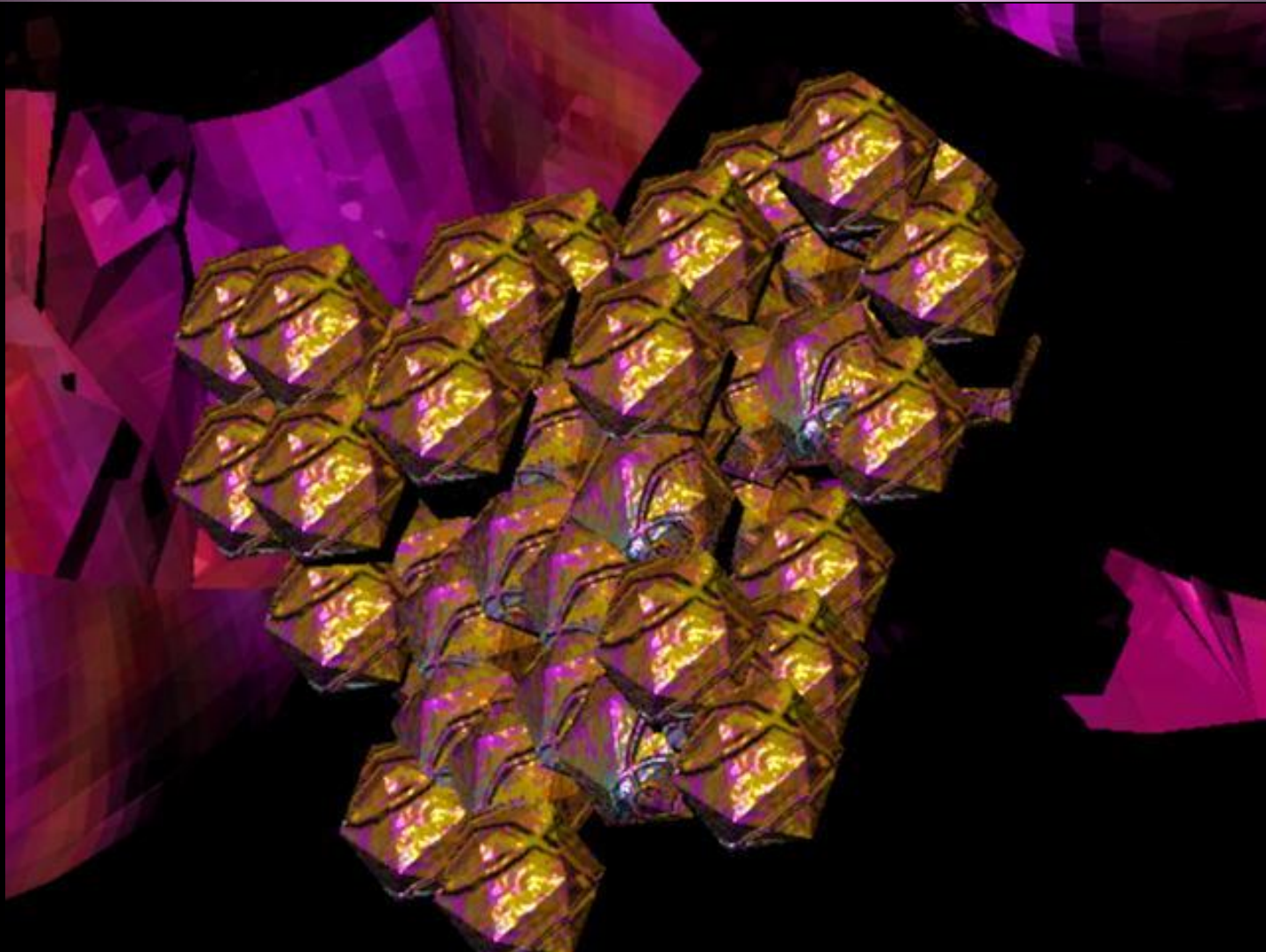
Kevin Cain



3/6/2019

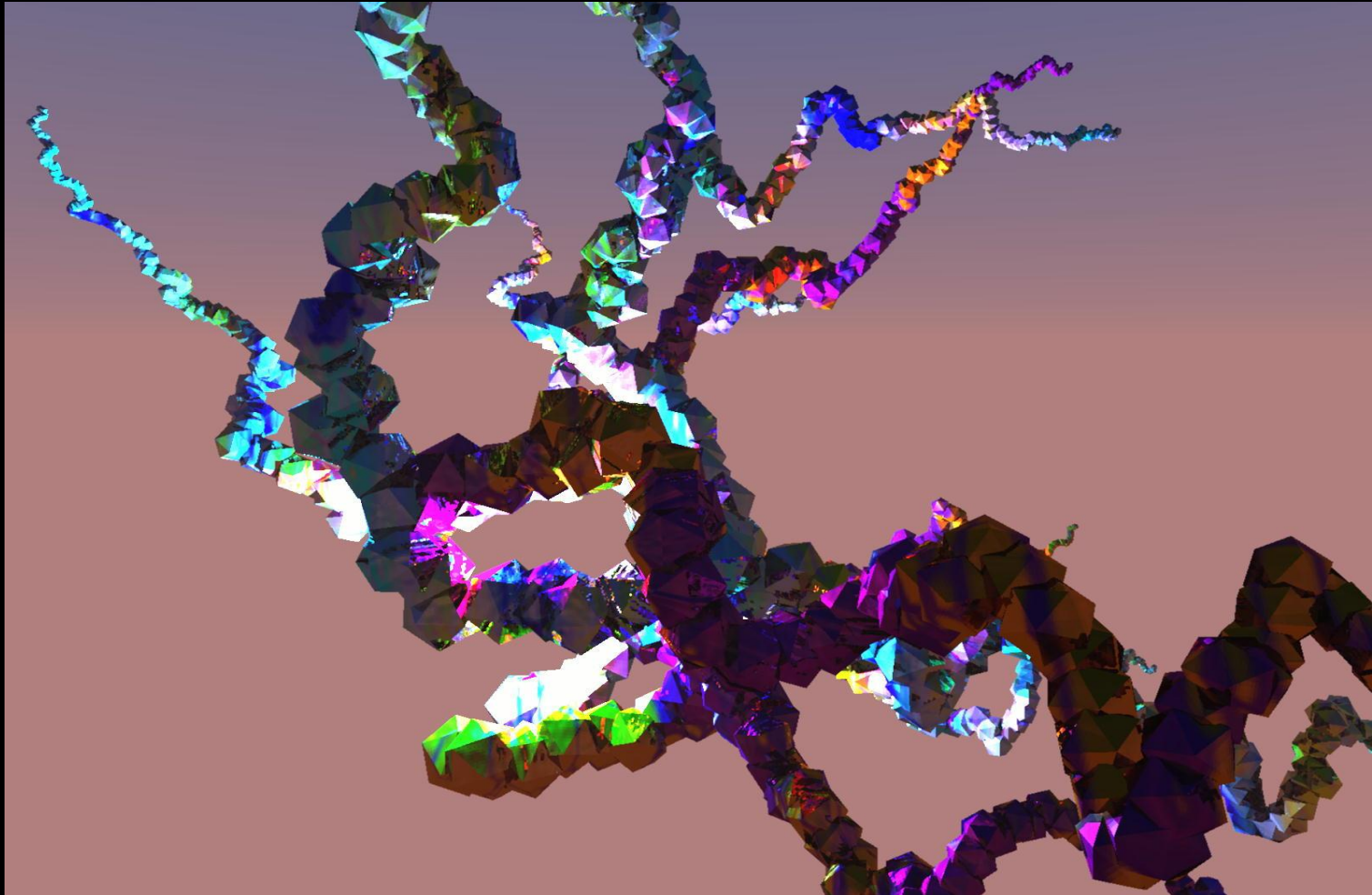
Biological Metaphors in Computing

Charles Ostman



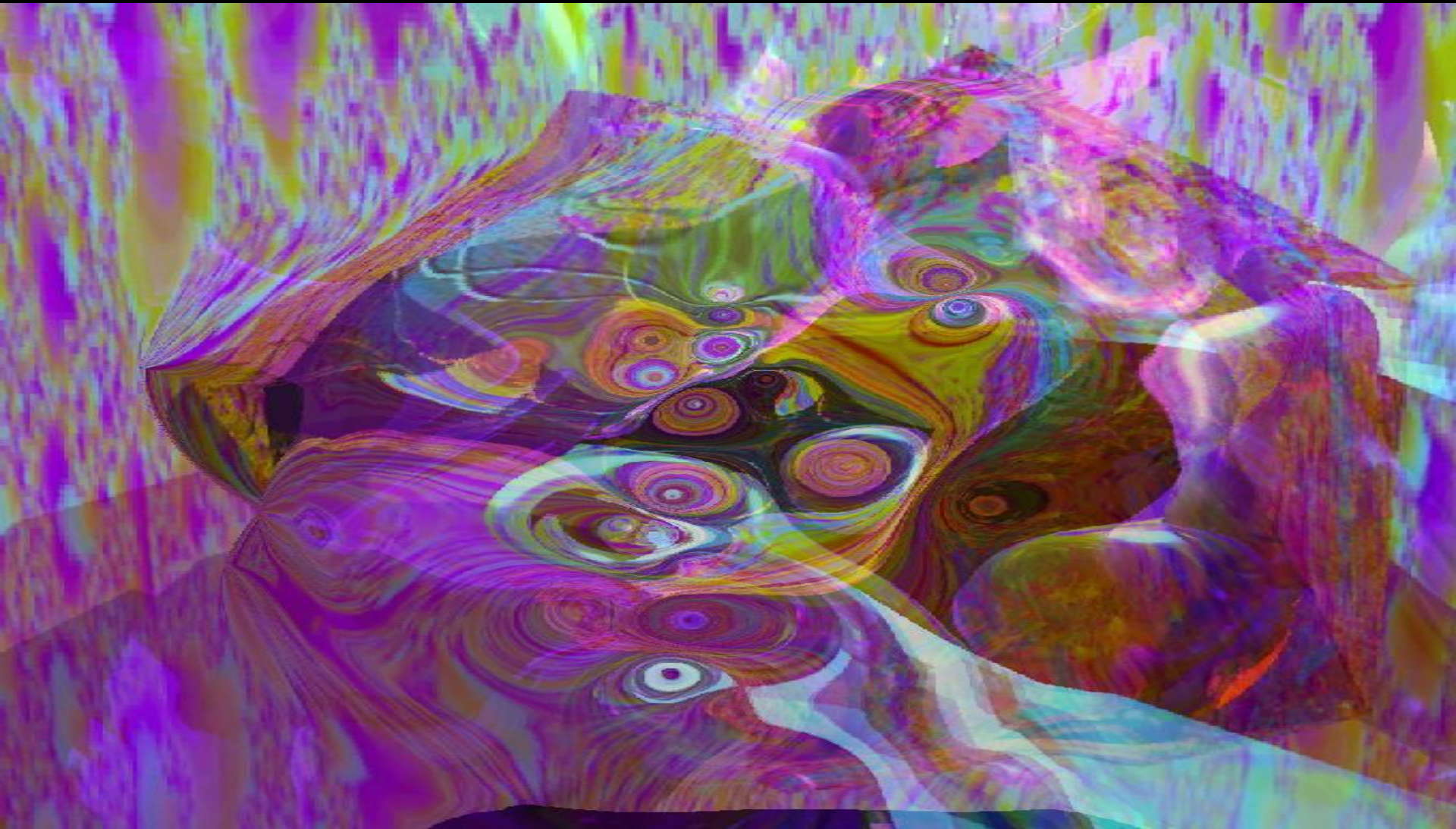
Biological Metaphors in Computing

Charles Ostman



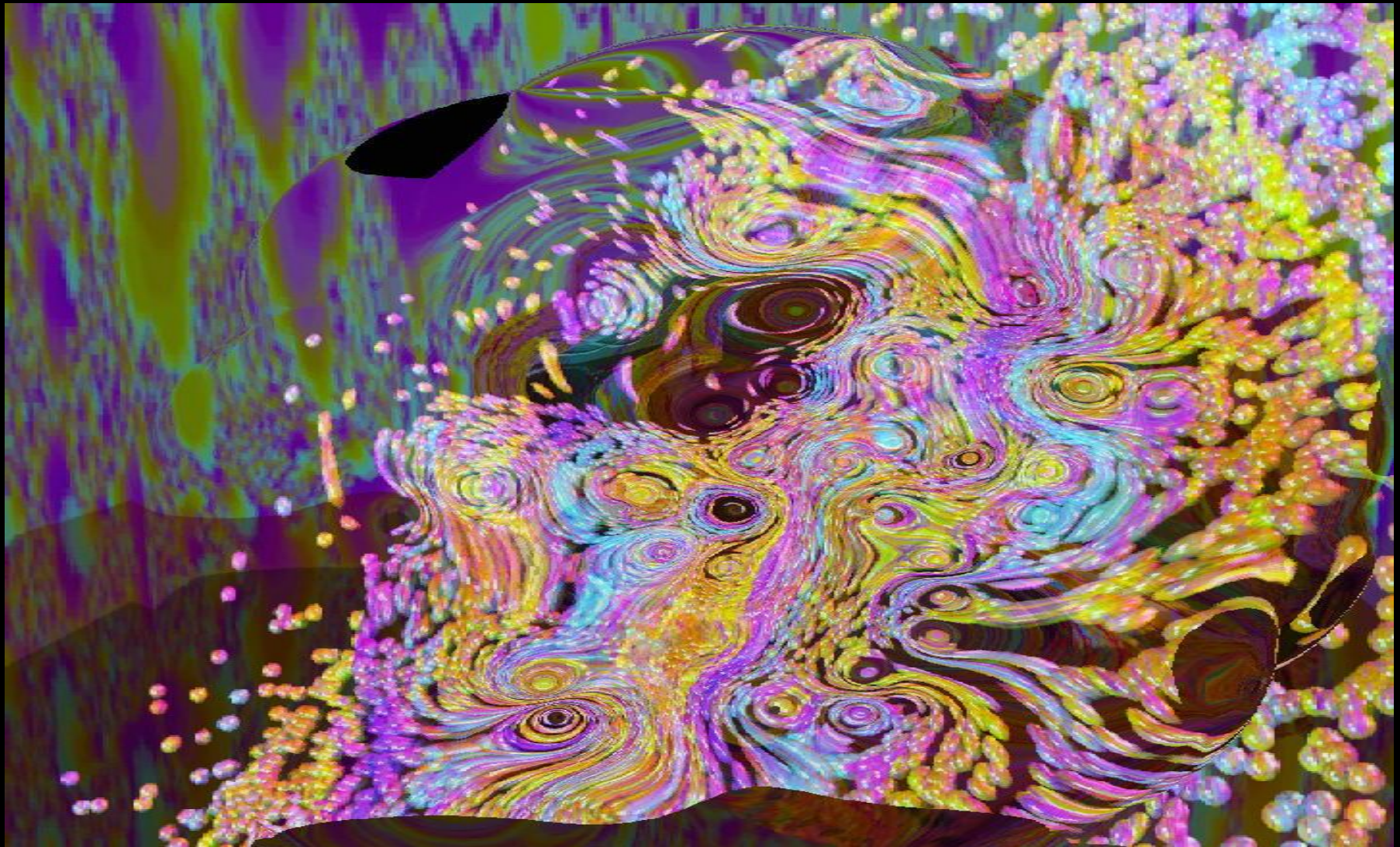
Biological Metaphors in Computing

Charles Ostman

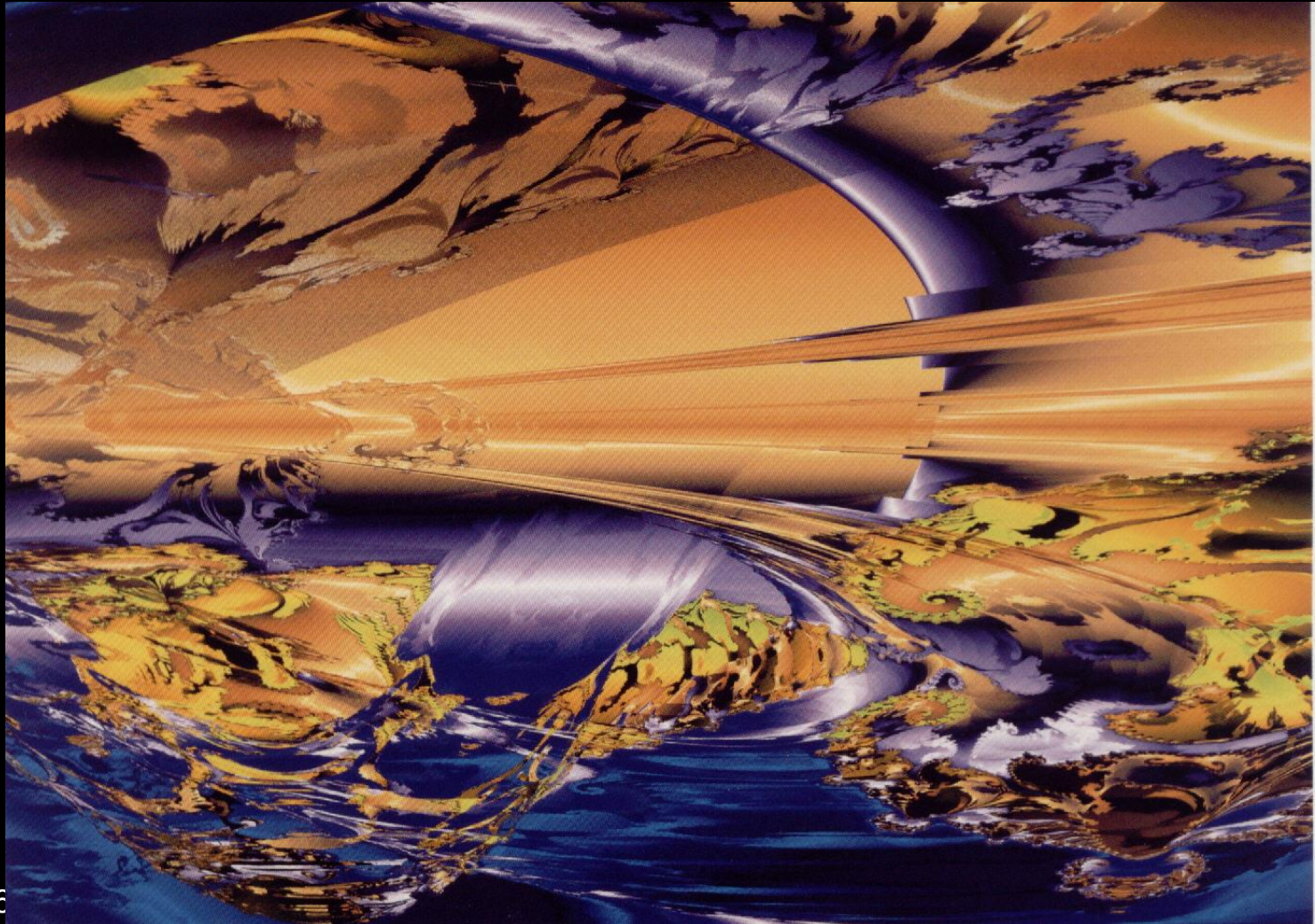


Biological Metaphors in Computing

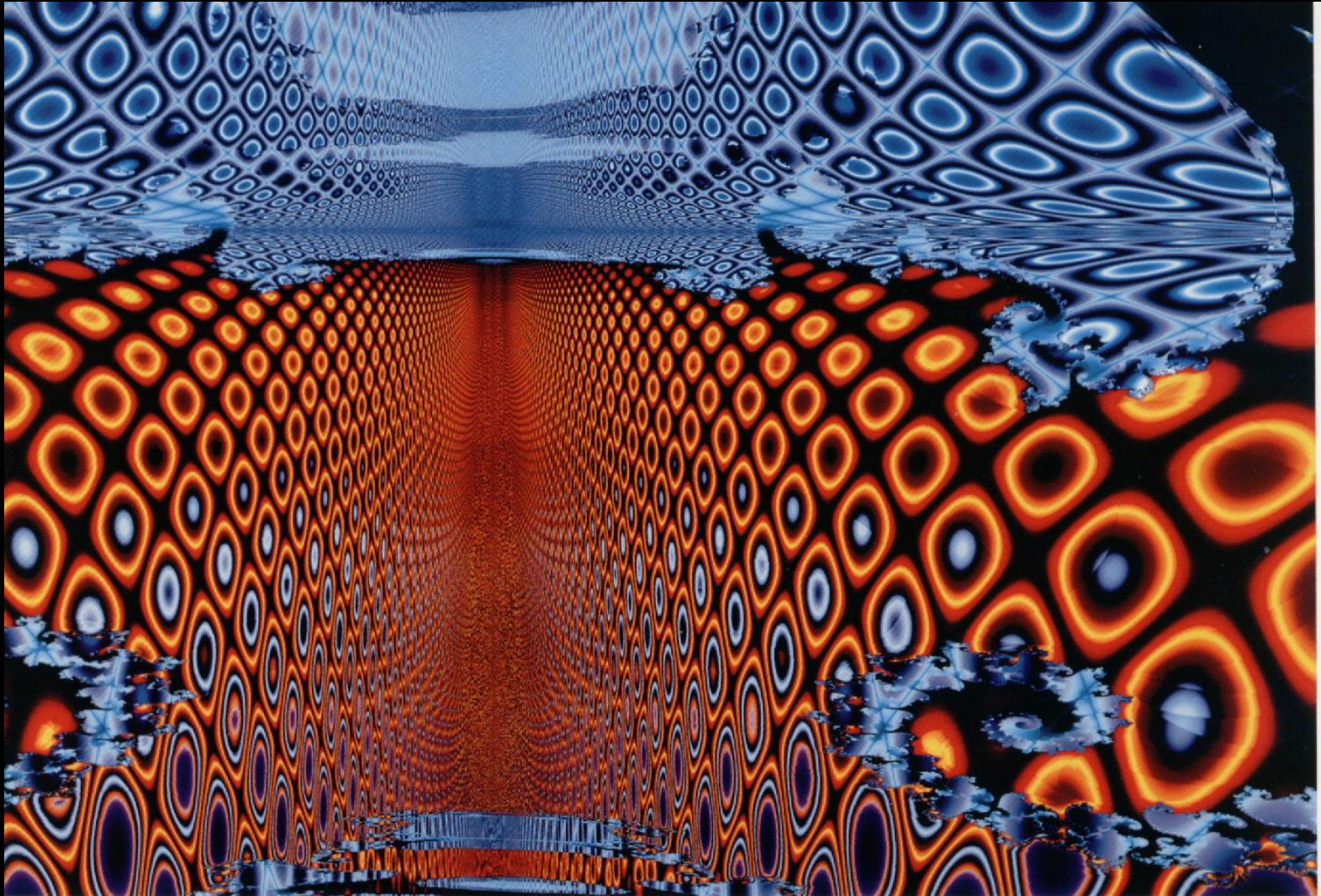
Charles Ostman



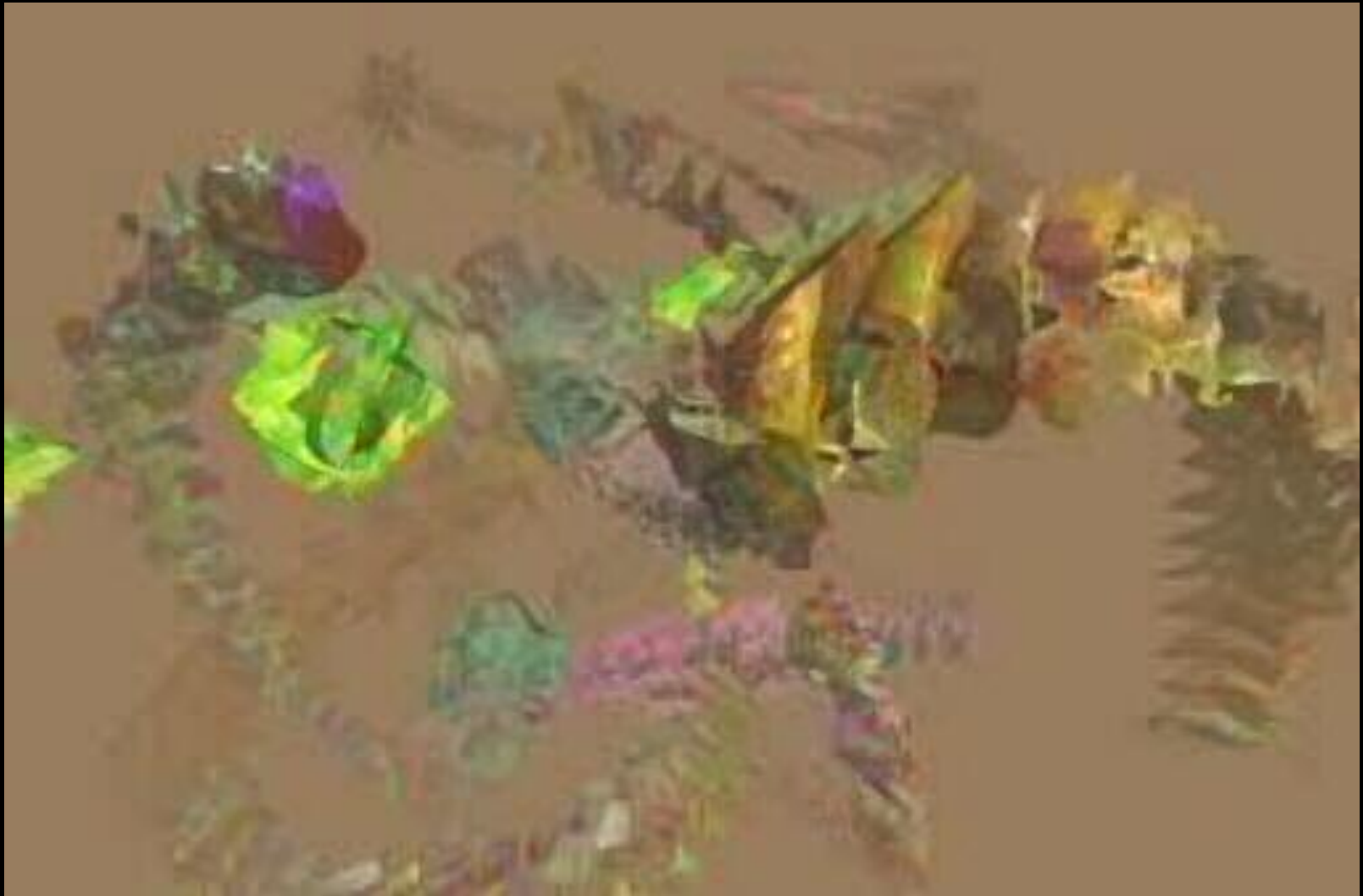
Genetic evolution applied to fractal systems – Steven Rooke



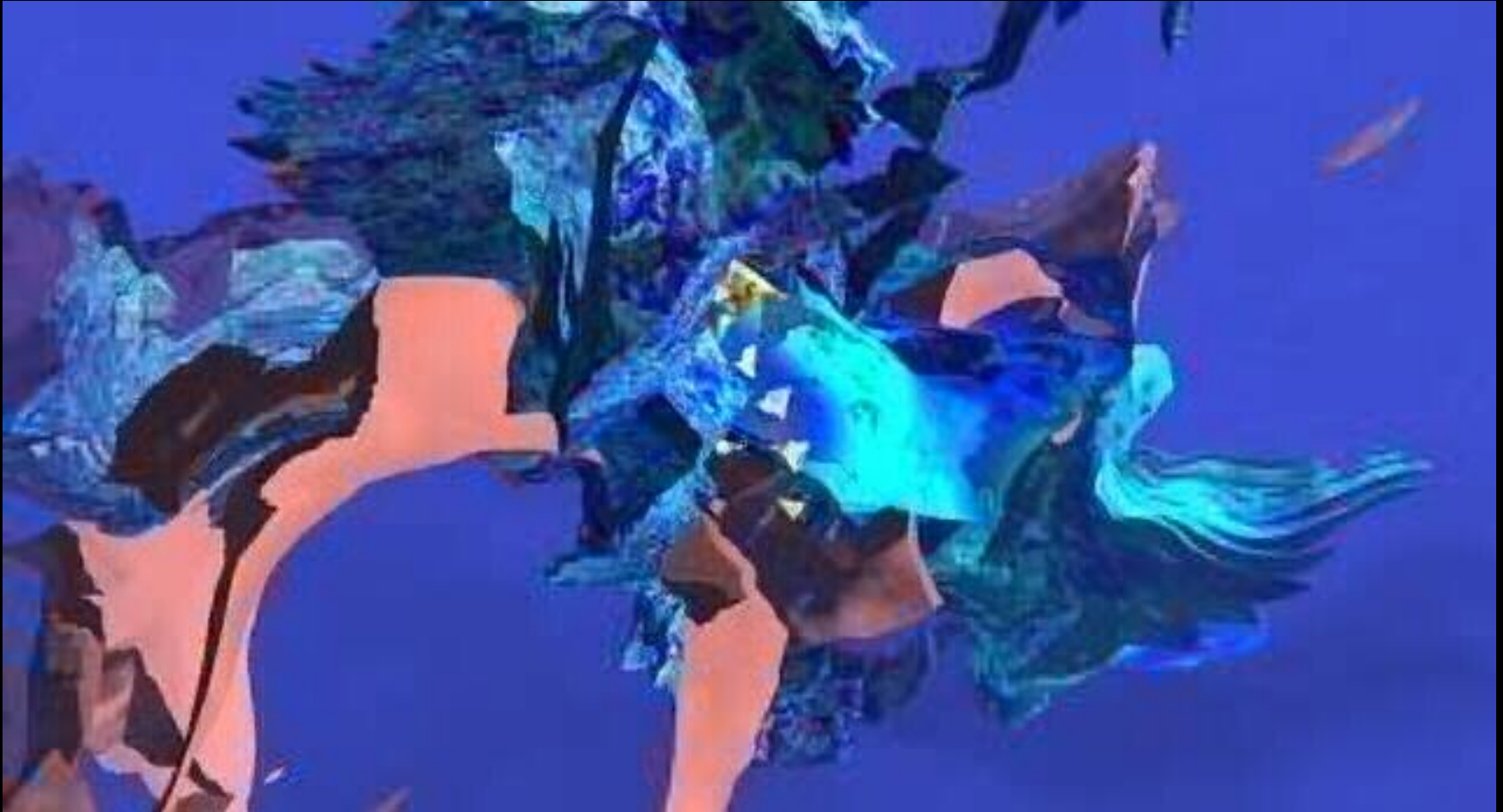
Genetic evolution applied to fractal systems – Steven Rooke



Genetic evolution applied to artificial life – Kees van Prooijen



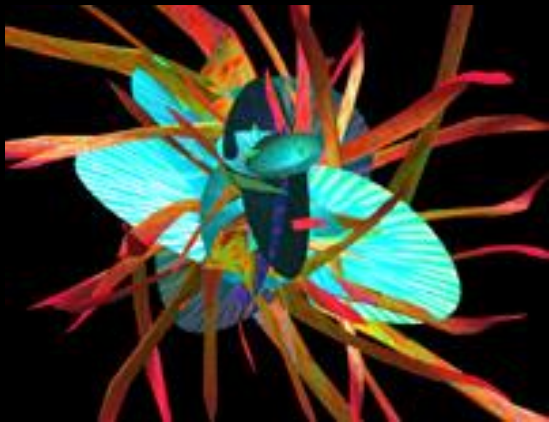
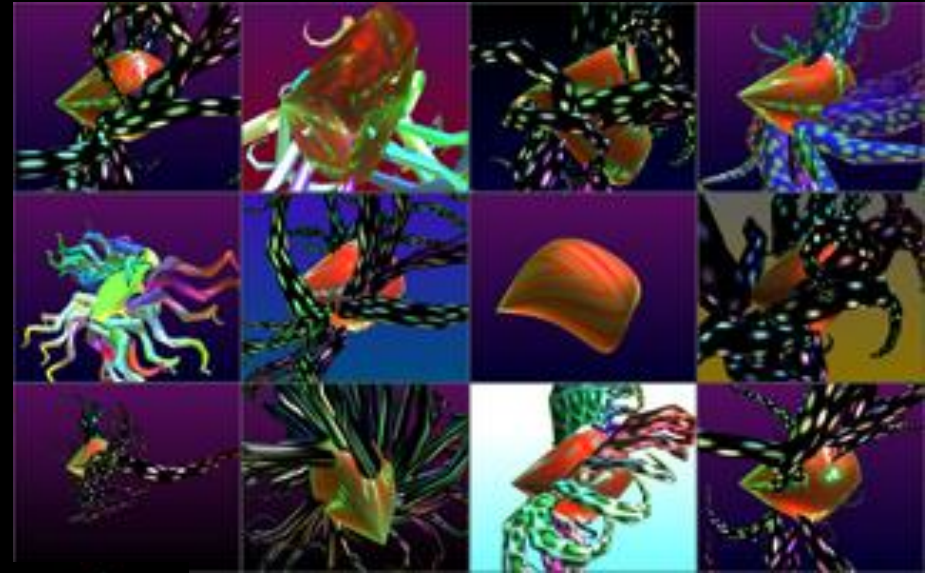
Genetic evolution applied to artificial life – Kees van Prooijen



Genetic evolution applied to artificial life – Kees van Prooijen



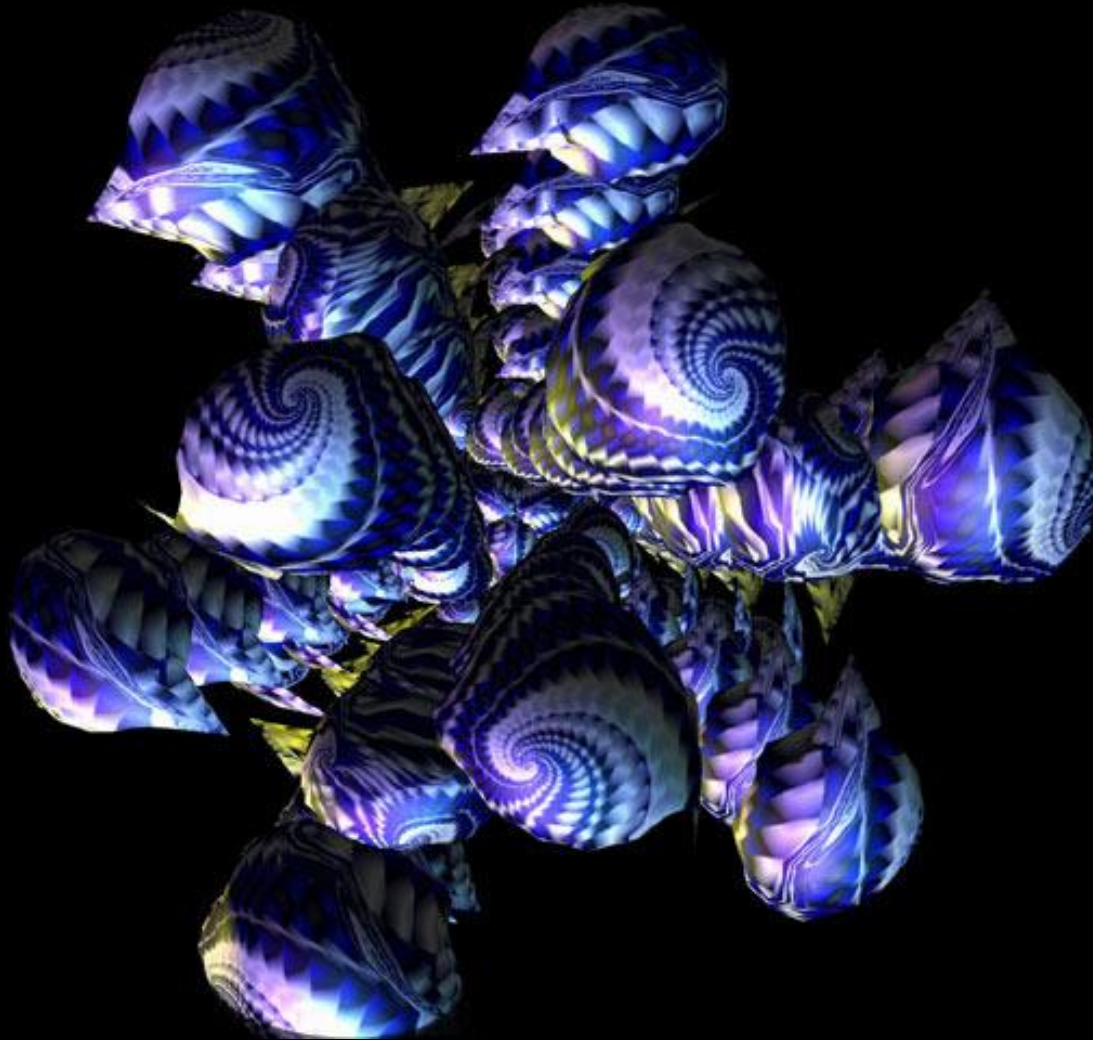
Genetic evolution applied to artificial life – Karl Simms



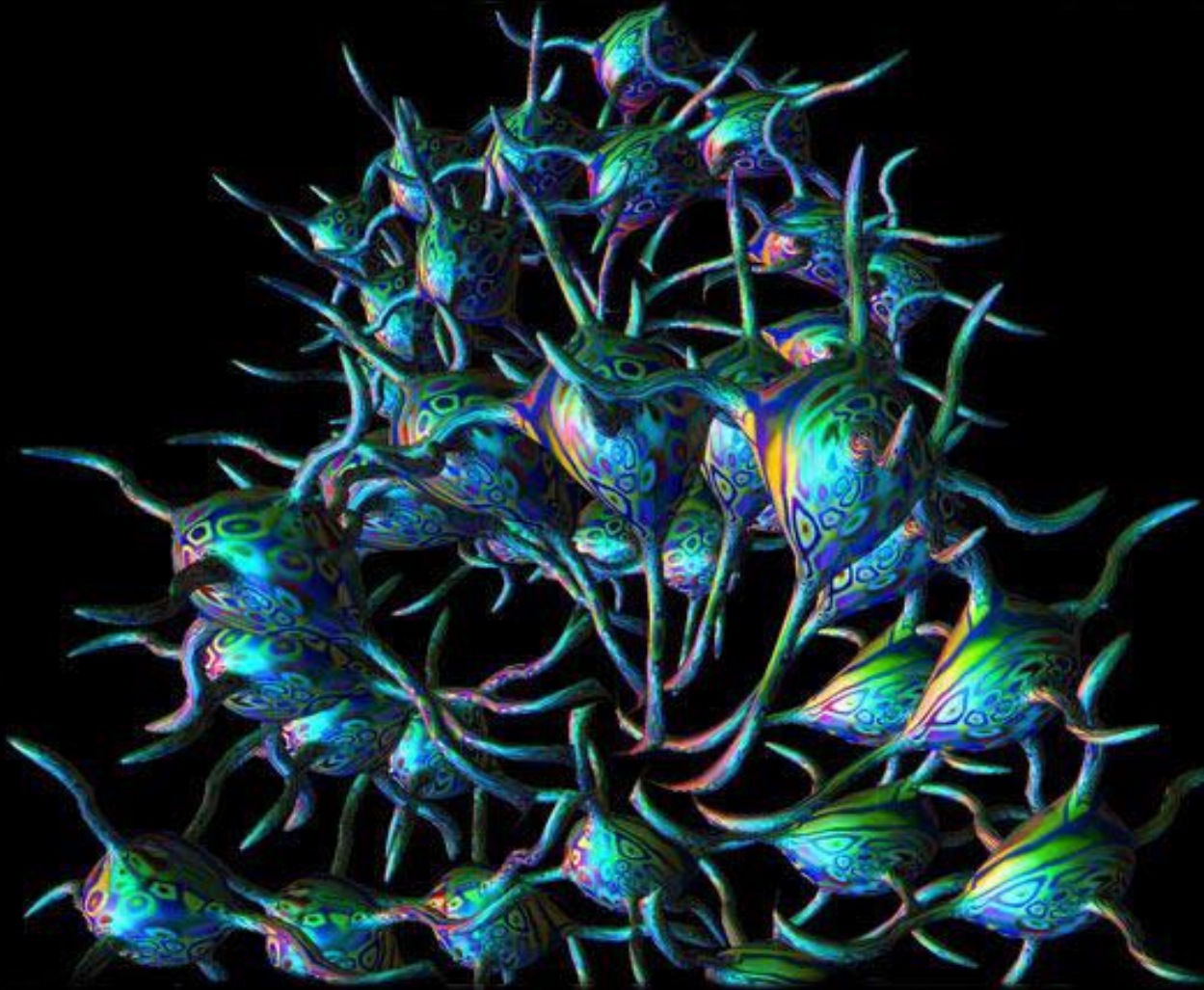
Genetic evolution applied to artificial life – Karl Simms



Genetic evolution applied to artificial life – William Latham



Genetic evolution applied to artificial life – William Latham

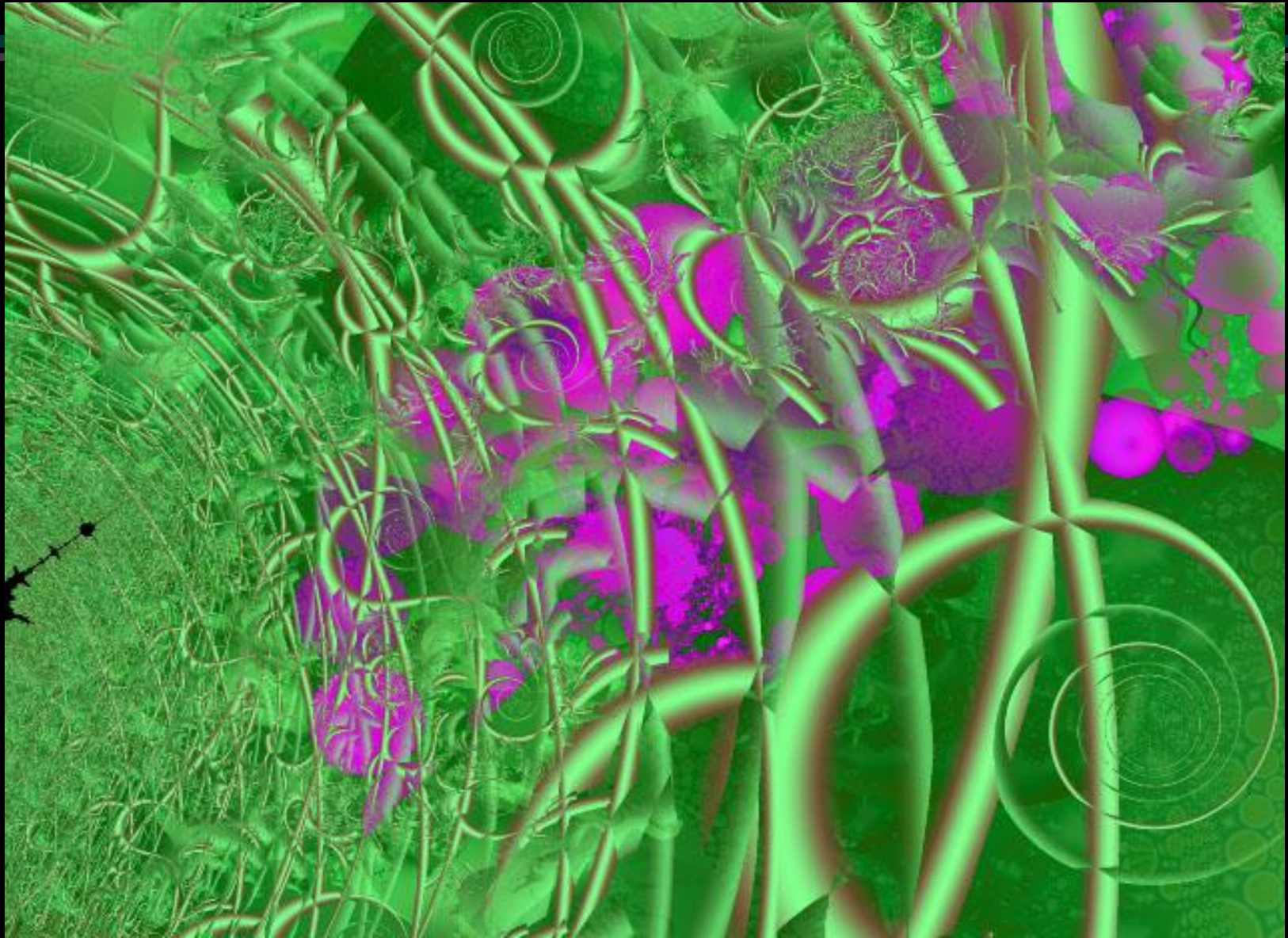


3/6/20

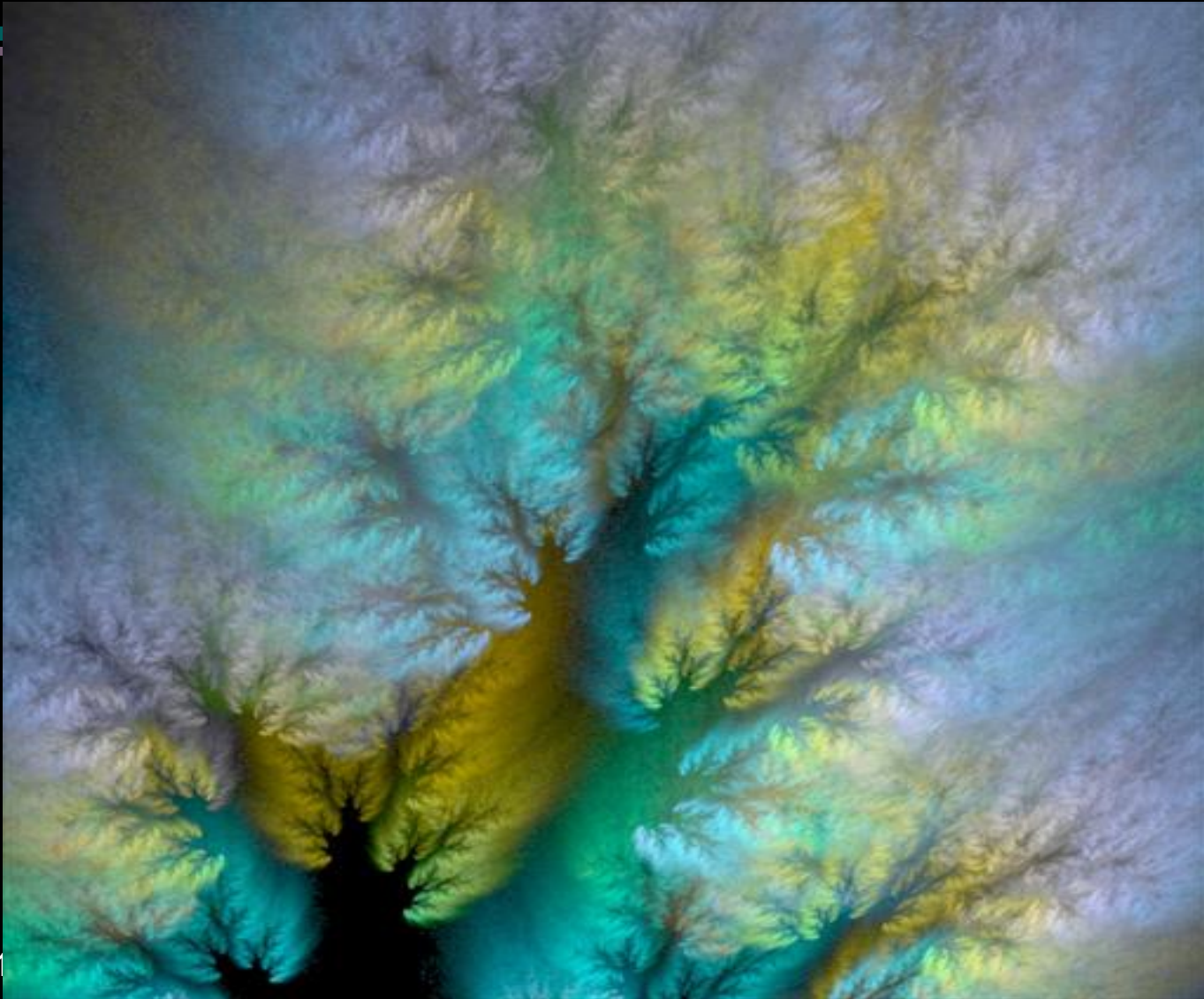
Genetic evolution applied to artificial life – William Latham



Fractal Variant Extrapolations – *Michèle Dessureault*



Fractal Variant Extrapolations – *Cory Ench*



3/6/201

Fractal Variant Extrapolations – *Lee Skinner*

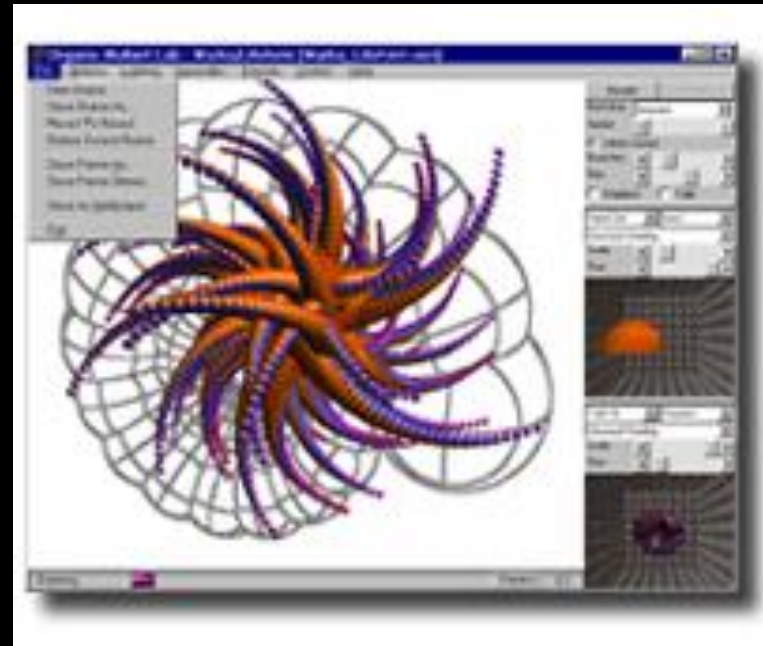
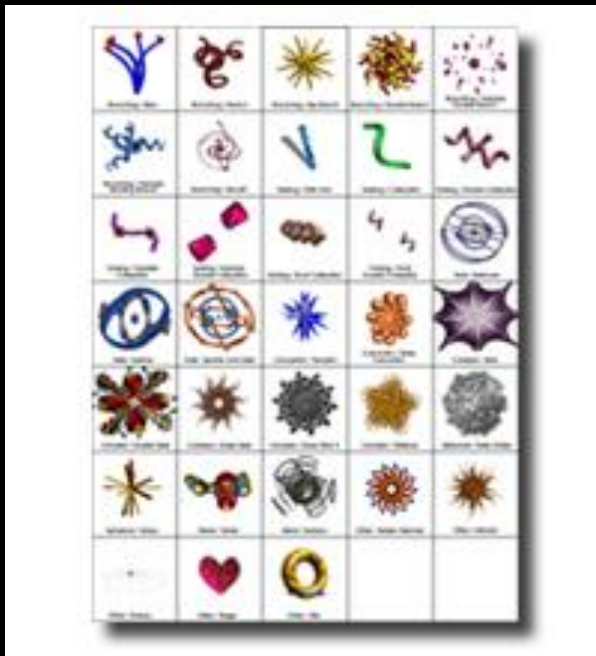


3/6/2019

Fractal Variant Extrapolations – *Arne Richter*



Genetic evolution applied to artificial life – William Latham



A BIT of Evolution



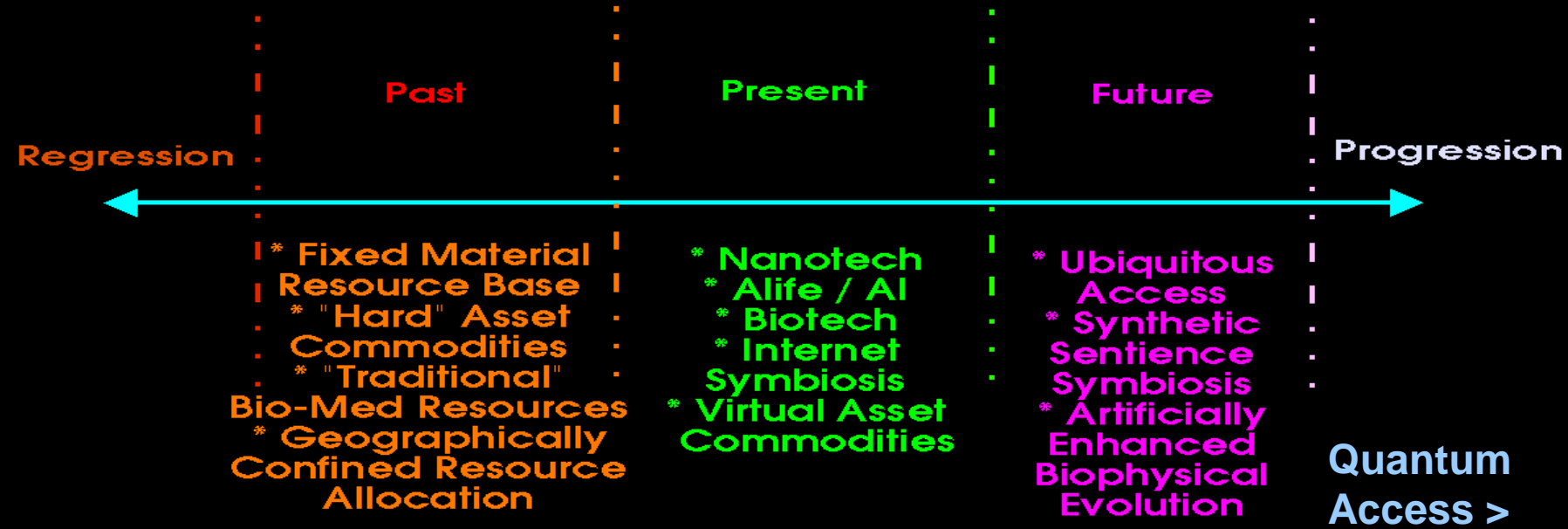


Biological Metaphors in Computing

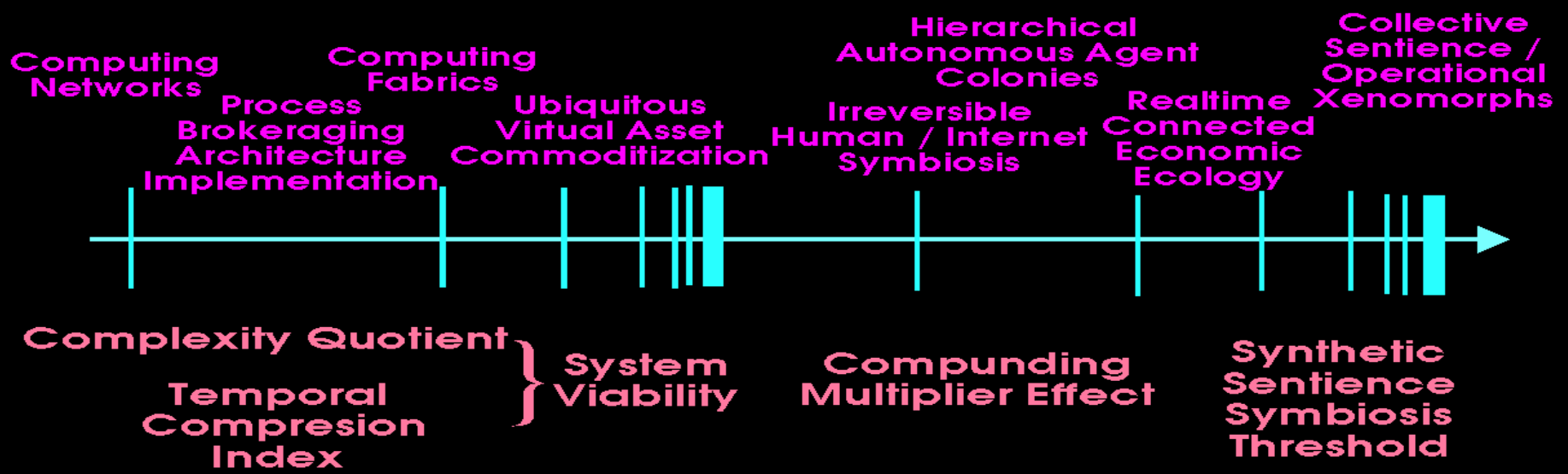
Bill Niedow



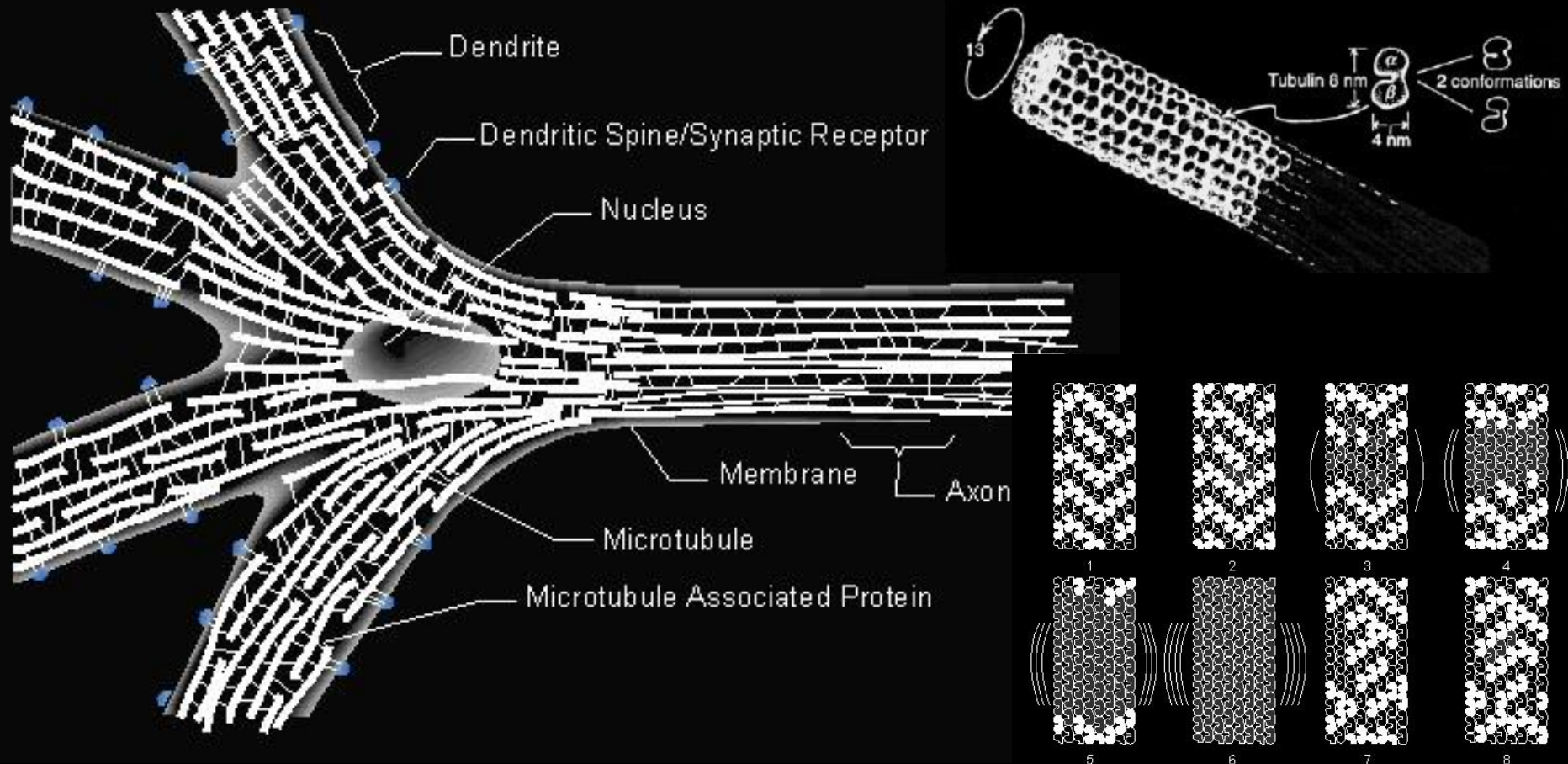
Technology Driven Socio-Anthropological Evolutionary Threshold Domains



Evolutionary Eventstream Seminal Markers



Microtubulin / Neural Quantum Interface Infrastructure

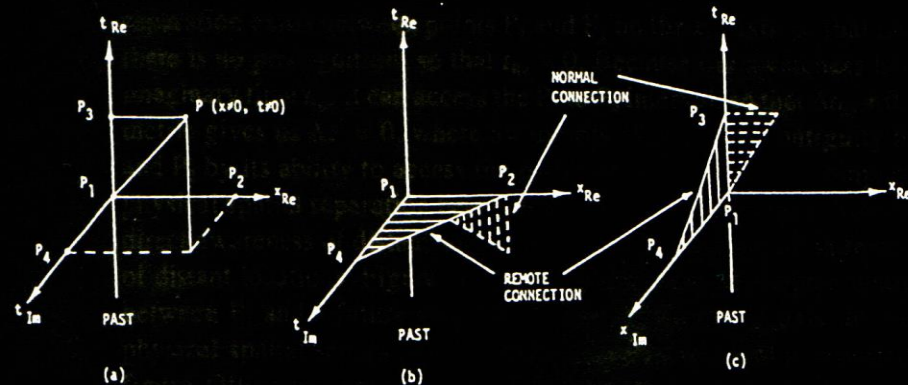


4D Spatio-Temporal Domain of Biophysical Confinement in Localized Phenomenological Causality Linkage vs 8D / ND Quantum Domain non-Locality Space-Time Metric

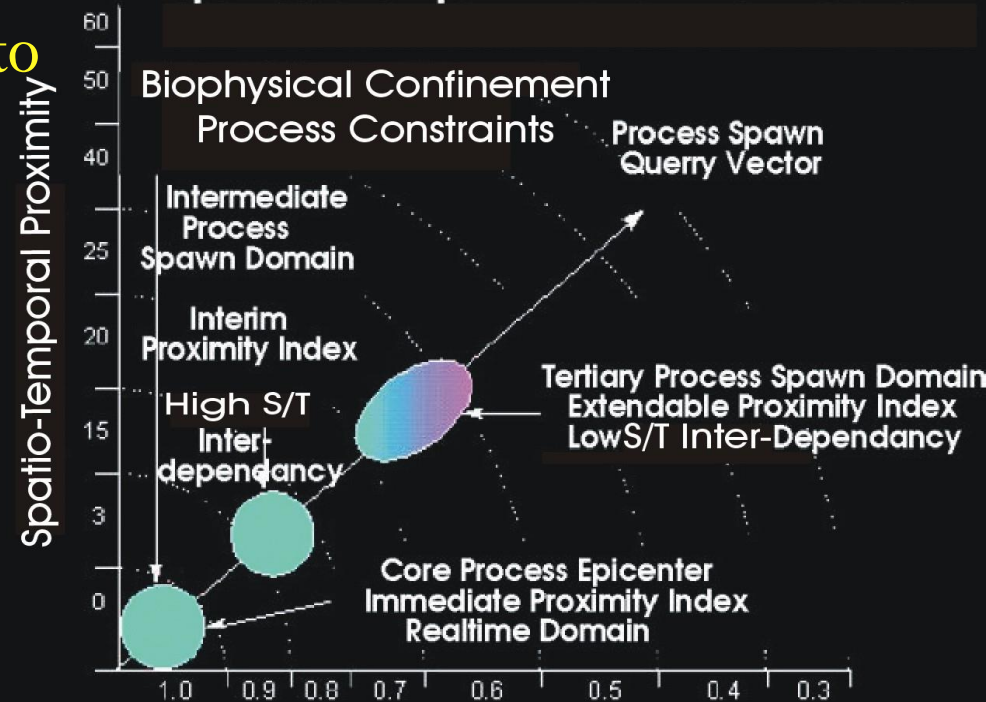
The Speed of Thought: Investigation
of a Complex Space-Time Metric to
Describe Psychic Phenomena
Elizabeth Rauscher, Russell Targ

8-dimensional metric known as
"complex Minkowski space"

The Speed of Thought



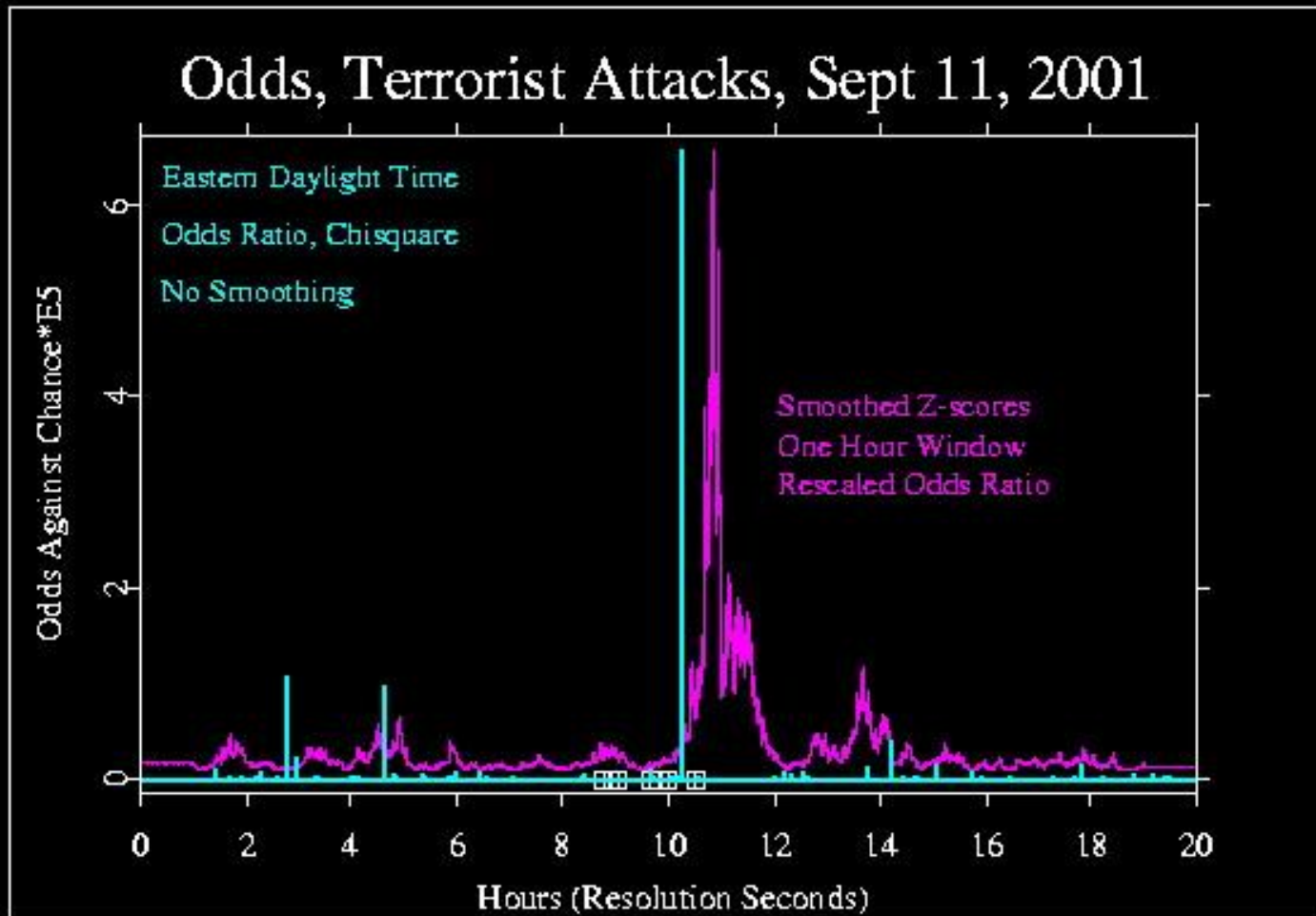
4D Spatio-Temporal Process Manifold



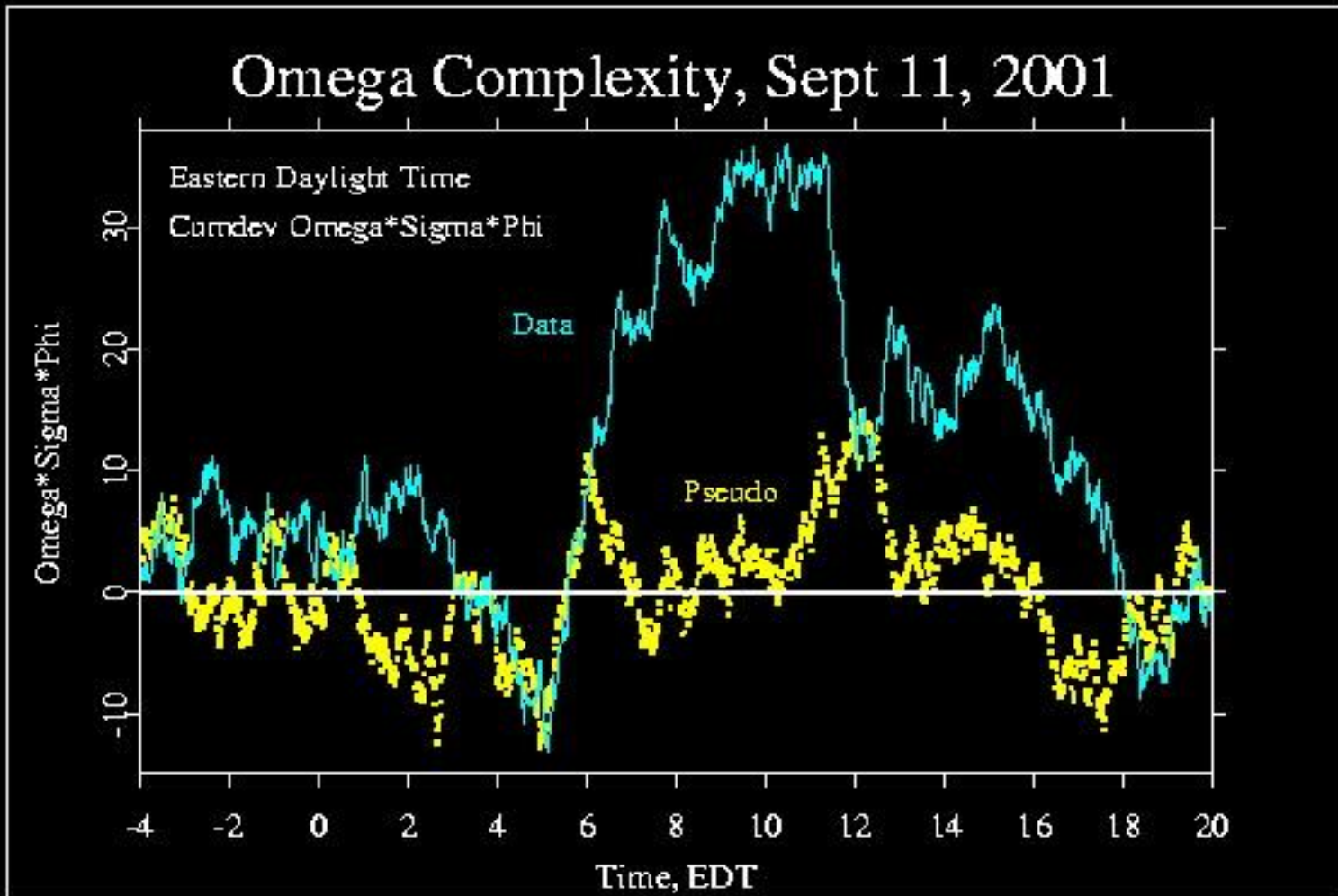
Phenomenological / Causality Linkage Proximity Domains
 < **8D Precognitive perception domain model**

- A – spatio-temporal separation
- B – spatially separated, temporally synchronous
- C – temporally separated, spatially contiguous

Evidence of Potential Entanglement Field Artifacts of Quantum Domain State Phase Transitions Affecting RNG Datastream Statistical Variants – Mass Mental Synchronicity Event Correlation



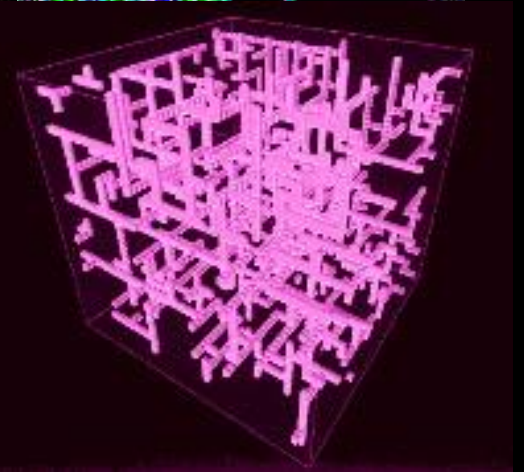
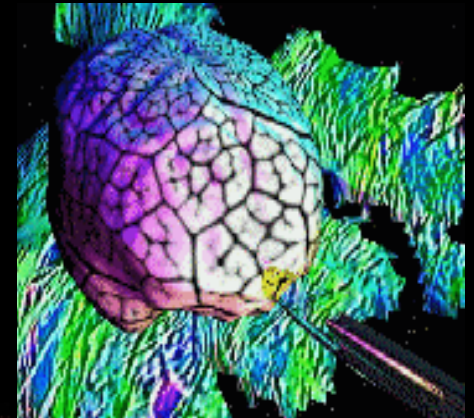
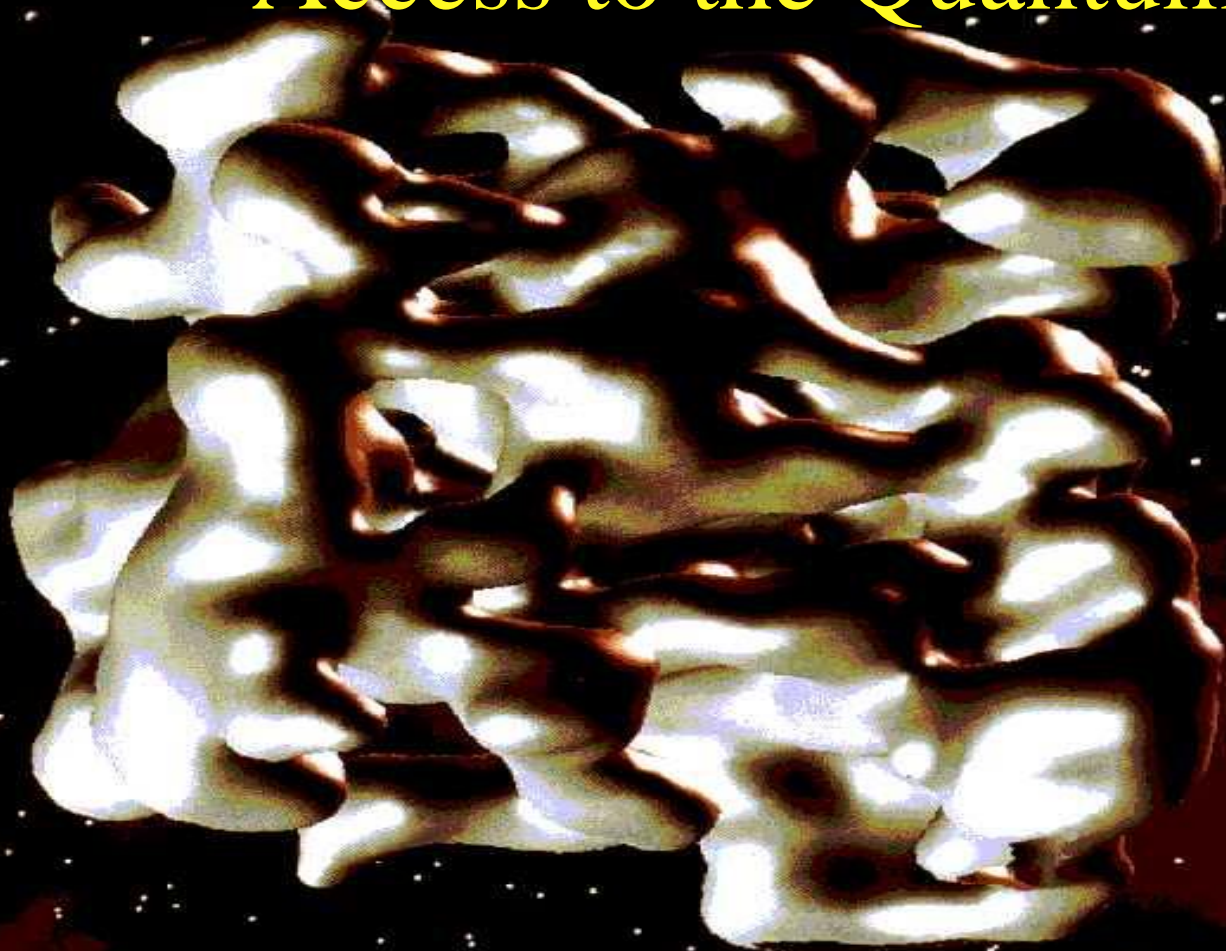
Evidence of Potential Entanglement Field Artifacts of Quantum Domain State Phase Transitions Affecting RNG Datastream Statistical Variants – Mass Mental Synchronicity Event Correlation



The Next Evolutionary Eventhorizon

Hybrid Forms of Consciousness -

Access to the Quantum Foam



We are Biophysical Manifestations of Entities Dwelling within a Ubiquitous Quantum Manifold – the “Quantum Jello” model

- All Living Things are Interconnected into an Operational Ecology
- Life as it is currently perceived extends beyond mere “biophysical containment”
- This Planet as a “Living System” is Interconnected into a Cosmological Ecology



Evidence of Physical Manifestations of Communication within the Empathic Web

The Message:

- Respect for all Living Things
- Respect for the Planet as a Living Thing
- Respect for the Cosmos as a “Living System”

